



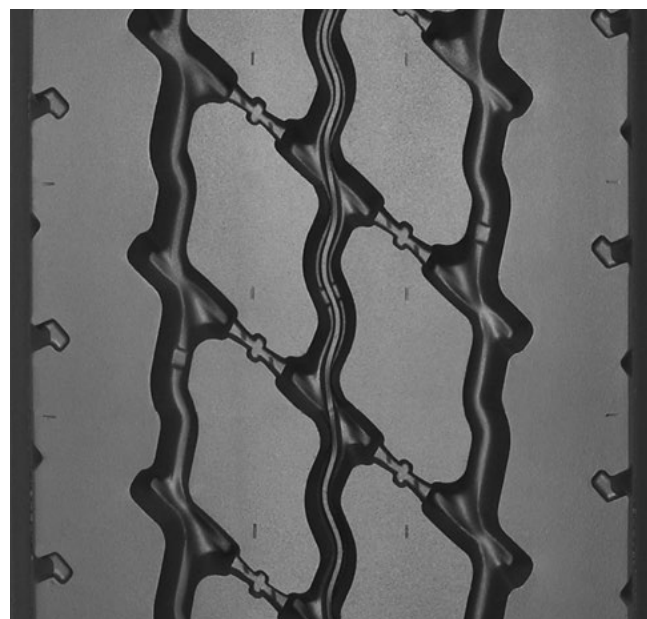
ON / OFF ROAD APPLICATIONS

# THE MICHELIN® XZY® 3 PRE-MOLD RETREAD



The MICHELIN® XZY®3 Pre-Mold Retread is an all-wheel position tread<sup>(1)</sup> designed for exceptional wear and all-position traction in mixed on/off road service. Abrasion resistant compound promotes long casing and tread life.

Line Haul	Regional	Urban	<b>On/Off Road</b>
<input checked="" type="checkbox"/> Recommended	<input type="checkbox"/> Acceptable		



## BENEFITS:

### Heavy Duty Tread Protection

Protects against aggression, chipping and scaling

- **Anti-Cut/Chip Compound**

Protects center channel against stone drilling and assists in stone ejection

- **Center Groove Bottom Protector**

### Long Tread Life

Delivers long life in on/off road service

- **Deep Tread Depth**

### Maximized All-Position Traction

Traction in soft soil and mud

- **Aggressive 4-Rib Tread Design**


Tread Size	Metric	210	220	230	240	250	270
Tread Depth	Metric	19 mm					
	Inches	24/32"					

(1) Federal Motor Carrier Safety Regulations, 9 C.F.R. § 395.75 (d), specify that "no bus shall be operated with regrooved, recapped or retreaded tires on the front wheels."

(2) Tread widths with two measurements have wings. The first number is tread base width in mm. The second number is the overall width, wing tip to tip.

(3) Winged Tread provides maximum shoulder adhesion in high scrub applications.

 TO FIND OUT MORE  
 US: [michelintruck.com](http://michelintruck.com)  
 CA: [michelintruck.com/en\\_ca](http://michelintruck.com/en_ca)

 FIND US ON FACEBOOK  
[michelintruck.com](http://michelintruck.com)

 CONTACT US BY EMAIL  
 US: [michelintruck.com/contact-us/](http://michelintruck.com/contact-us/)  
 CA: [michelintruck.com/en\\_ca/contact-us/](http://michelintruck.com/en_ca/contact-us/)

 CONTACT US BY TELEPHONE  
 US: 1-888-622-2306  
 CA: 1-888-871-4444

Michelin North America Inc., One Parkway South, Greenville, SC 29615  
 Michelin North America (Canada) Inc., 2500 Daniel Johnson Blvd., Suite 500, Quebec H7T 2P6  
 © 2019 Michelin North America, Inc. The Michelin Man is a registered trademark owned by Michelin North America, Inc. All rights reserved. An Equal Opportunity Employer. PDF Only. (05/19)  
 © 2019 MNA(C). All rights reserved.

