



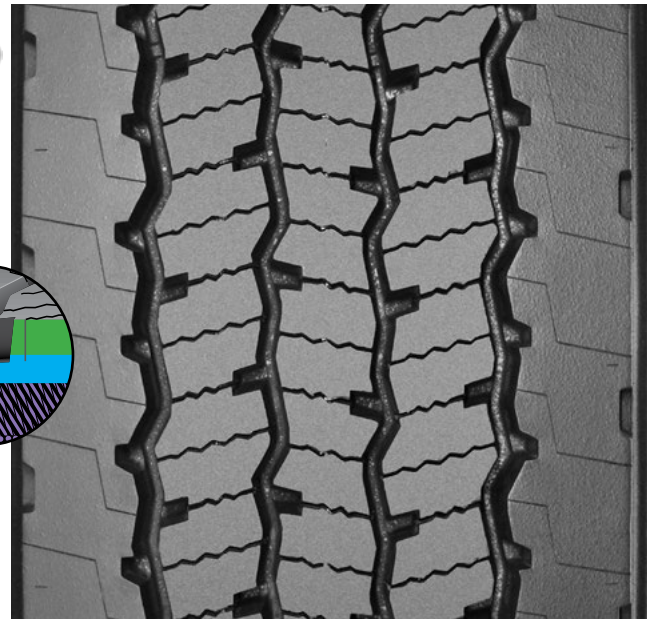
LINE HAUL APPLICATIONS

# THE MICHELIN® X® LINE ENERGY D PRE-MOLD™ RETREAD



The MICHELIN® X® LINE ENERGY D Pre-Mold™ retread offers exceptional SmartWay® fuel economy with leading tread life and traction in a line haul energy drive retread.

Line Haul	Regional	Urban	On/Off Road
<input checked="" type="checkbox"/> Recommended	<input type="checkbox"/> Acceptable		

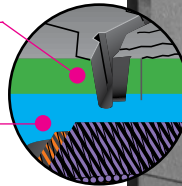


## BENEFITS:

### Fuel Efficiency<sup>(1)</sup>

SmartWay® fuel economy<sup>(2)</sup> with wear resistance

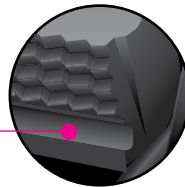
- **Dual Energy Compound Tread**
  - Exceptional wear properties (top layer)
  - Cool running tread rubber minimizes internal casing temperatures for low rolling resistance and extended casing life (bottom layer)



### 25% Longer Tread Life<sup>(3)</sup>

Guaranteed more miles<sup>(4)</sup>

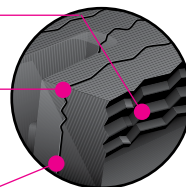
- **Dual Energy Compound Tread**  
Top layer – strengthens wear resistance
- **Wider footprint<sup>(3)</sup> and solid shoulder**  
More contact area to distribute force
- **Matrix™ Siping**
- **Tear-drop sipes** – resists tearing



### Driver Confidence

Outstanding traction with Matrix™ Siping

- **Matrix™ Sipes** provide inter-locking action which offers excellent traction and even wear.
- **Zig-Zag groove walls** provide optimized biting edges and excellent water and snow evacuation.
- **Full depth sipes** provide excellent traction throughout the life of the tread.
- **Tear-drop sipes** provide additional late life traction



Tread Size	Metric	220	230	240
Tread Depth	Metric	17 mm		
	Inches	21/32"		

- (1) Based on industry standard rolling resistance testing of comparable tires or retreads. Actual results may vary, and may be impacted by many factors, to include road conditions, weather and environment, driver performance, etc.  
 (2) Based on internal tests against SmartWay® requirements.  
 (3) As compared to MICHELIN® XDA2® 23 tires.  
 (4) See Guarantee for details.

### MICHELIN on MICHELIN Guarantee

A premium MICHELIN® retread with special guarantee(s) when retreaded on a MICHELIN® casing. See guarantee(s) at [michelintruck.com](http://michelintruck.com) for details.

TO FIND OUT MORE  
[michelintruck.com](http://michelintruck.com)

FIND US ON FACEBOOK  
[michelintruck.com](http://michelintruck.com)

CONTACT US BY EMAIL  
[michelintruck.com/contact-us/](http://michelintruck.com/contact-us/)

CONTACT US BY TELEPHONE  
1-888-622-2306

Michelin North America Inc., One Parkway South, Greenville, SC 29615, 1-888-622-2306  
Copyright © 2018 Michelin North America, Inc. The Michelin Man is a registered trademark owned by Michelin North America, Inc. All rights reserved.  
An Equal Opportunity Employer PDF only (07/18)

[www.michelintruck.com](http://www.michelintruck.com)

