



LINE HAUL APPLICATIONS

THE MICHELIN® XT-1® AT CUSTOM MOLD RETREAD



MICHELIN
RETREAD
TECHNOLOGIES

The MICHELIN® XT-1® AT⁽¹⁾ Custom Mold Retread is a premium trailer position retread for line haul applications, providing fuel efficiency⁽¹⁾ and long, even wear.

| | | | |
|---|-------------------------------------|-------|-------------|
| Line Haul | Regional | Urban | On/Off Road |
| <input checked="" type="checkbox"/> Recommended | <input type="checkbox"/> Acceptable | | |

BENEFITS:

Fuel Efficiency⁽²⁾ –

Provides low rolling resistance

- **Advanced Technology™ compounds**

Strong Wet Weather Performance –

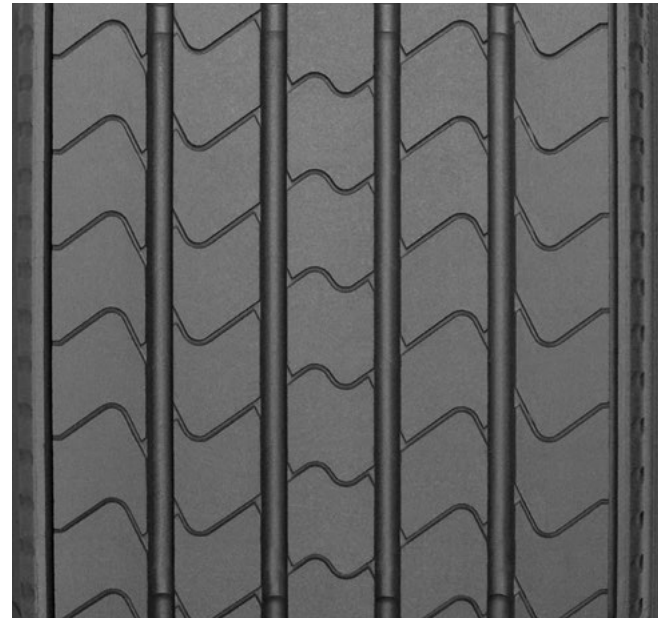
Effective water evacuation

- **Four see-through circumferential grooves**

Long, Even Tread Life –

Resists the onset of irregular wear

- **Unique shoulder groove design**



Also available as a Pre-Mold™ Retread.

| Casing Size | Tread Depth |
|-------------|-------------|
| 11R22.5 | 12/32" |
| 11R24.5 | |
| 275/80R22.5 | |
| 275/80R24.5 | |

(1) AT designated Advanced Technology™ Compounds for fuel savings.

(2) Fuel savings are estimates based on comparative rolling resistance. Actual on-road savings may vary.

TO FIND OUT MORE
michelintruck.com

FIND US ON FACEBOOK
michelintruck.com

CONTACT US BY EMAIL
michelintruck.com/contact-us/

CONTACT US BY TELEPHONE
1-888-622-2306

Michelin North America Inc., One Parkway South, Greenville, SC 29615, 1-888-622-2306
Copyright © 2018 Michelin North America, Inc. The Michelin Man is a registered trademark owned by Michelin North America, Inc. All rights reserved.
An Equal Opportunity Employer PDF only (07/18)

www.michelintruck.com

