



URBAN APPLICATIONS

# THE MICHELIN® X ONE® XZU® S PRE-MOLD™ RETREAD



Line Haul	Regional	<b>Urban</b>	On/Off Road
-----------	----------	--------------	-------------

Recommended  Acceptable

The MICHELIN® X ONE® XZU® S Pre-Mold™ Retread is a multipurpose, all axle, new generation wide-based single, designed with traction and durability features for demanding urban applications.

## BENEFITS:

### Enhanced Durability –

Casing temperature

- **Co-Ex technology, unique two layer compound**

Stone drill resistance

- **Variable pitch groove walls and groove bottom protectors**

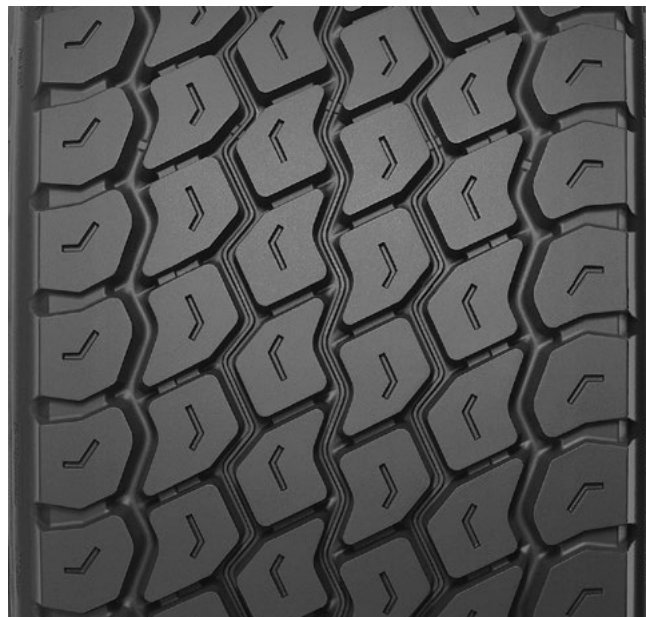
### Improved Traction –

All weather

- **Optimized tread design**
- **Deep 23/32nds tread depth**

### Max Secured Tread –

- Winged tread
- **Provides maximum tread-to-shoulder adhesion in high scrub applications**



Tread Size	Metric	385/435 <sup>(1)</sup>
Tread Depth	Metric	18 mm
	Inches	23/32"

(1) Tread widths with two measurements have wings. The first number is tread base width in mm. The second number is the overall width, wing tip to tip.

TO FIND OUT MORE  
[michelintruck.com](http://michelintruck.com)

FIND US ON FACEBOOK  
[michelintruck.com](http://michelintruck.com)

CONTACT US BY EMAIL  
[michelintruck.com/contact-us/](http://michelintruck.com/contact-us/)

CONTACT US BY TELEPHONE  
**1-888-622-2306**

Michelin North America Inc., One Parkway South, Greenville, SC 29615, 1-888-622-2306  
Copyright © 2018 Michelin North America, Inc. The Michelin Man is a registered trademark owned by Michelin North America, Inc. All rights reserved.  
An Equal Opportunity Employer PDF only (07/18)

[www.michelintruck.com](http://www.michelintruck.com)

