

***MICHELIN® X® HA 2™***  
***LONG LASTING***  
***PERFORMANCE!***



**OPTIMIZE YOUR OPERATIONAL  
COST THANKS TO AN  
EXCEPTIONAL TIRE LIFE**



[www.michelinearthmover.com](http://www.michelinearthmover.com)





## +16% WEAR LIFE<sup>(1)</sup>

The MICHELIN® X® HA 2™ lasts up to 16%<sup>(1)</sup> on average more hours compared to premium competitors.

Wear resistant rubber compound

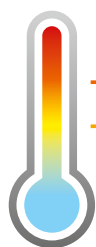
More rubber to be worn<sup>(2)</sup> MICHELIN® X® HA 2™:  
+9,5% volume of tread rubber vs. BRIDGESTONE® VJT and  
+4,6% vs BRIDGESTONE® VMT

Optimized contact patch with the ground



## DESIGNED FOR AN EXCELLENT ENDURANCE

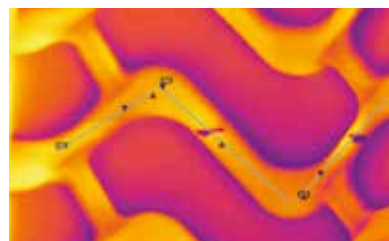
Heat is the number one enemy of a tire. If your tire runs cooler it will last longer. The tire has been designed to limit tread movement and so limit the effects of heat.



— 48.6°C – Bridgestone® VMT

— 47°C – Bridgestone® VJT

— 39.4°C – MICHELIN® X® HA 2™



MICHELIN® X® HA 2™ IS UP TO **19%**<sup>(3)</sup>  
VS BRIDGESTONE® VMT



## BETTER RESISTANCE TO AGGRESSIONS<sup>(4)</sup>

The Michelin tire is engineered with an architecture designed to absorb impact, minimizing damage, allowing your tire to continue working.

MICHELIN® X® HA 2™ HAS MORE  
SIDEWALL PUNCTURE RESISTANCE  
THAN BRIDGESTONE® VJT

MICHELIN® X® HA 2™

BRIDGESTONE® VJT



Superficial damage,  
no impact on the casing

The casing is destroyed,  
impossible to repair

17.5 R 25 MICHELIN® X® HA 2™ A L3 * 176A2	CAI 717545
20.5 R 25 MICHELIN® X® HA 2™ L3 * 186A2	CAI 899613
23.5 R 25 MICHELIN® X® HA 2™ L3 * 195A2	CAI 139147
26.5 R 25 MICHELIN® X® HA 2™ L3 ** 209A2	CAI 893825
29.5 R 25 MICHELIN® X® HA 2™ L3 ** 216A2	CAI 961307
875/65 R 29 MICHELIN® X® HA 2™ L3 * 214A2	CAI 936624



OUR WEBSITE  
michelinearthmover.com



TESTIMONIALS  
YouTube channel



PRESSURE ADVISOR  
pressureadvisor.michelinearthmover.com

(1) Compared to Premium competitors (Good Year® RT-3B, TL3A+ and BRIDGESTONE® VMT and VJT), field study in real life conditions made by Michelin for 5 years 2012-2017, on 170 tires in Eastern Europe, Western Europe, China and Asia South Pacific, same size (23.5 R25, 26.5 R25 and 29.5 R 25) and same usage.

(2) Measurement certified by the Michelin Center of Technology, using XAO software, comparison of MICHELIN® X® HA 2™ 26.5 R 25 against BRIDGESTONE® VMT and BRIDGESTONE® VJT, same size.

(3) Measurement certified by the Michelin Center of Technology, conducted at the Mining Testing Center in Almeria, Spain, in July 2016. Thermal measurements taken using a thermal imaging camera. Comparison of MICHELIN® X® HA 2™ 26.5 R 25 against BRIDGESTONE® VMT/VJT 26.5 R 25. All tires followed the same protocols and configuration (temperature, track), same number of tires tested. Test organized using a CAT 966 M, at 15km/h with 12000kg of load, at 4 bars pressure.

(4) Test certified by Michelin Center of Technology, conducted at the Mining Testing Center in Almeria, Spain, in July 2016. Comparison of MICHELIN® X® HA 2™ against BRIDGESTONE® VJT, same size. All tires followed the same protocols and configuration, same number of tires tested. Test organized using a CAT 966 M, at 15 km/h, with 12000 kg of load, at 4 bars pressure.