



REGIONAL & URBAN APPLICATIONS

# THE MICHELIN® X ONE® XZU® S TIRE

All-position new generation wide base single designed for significant weight and fuel savings<sup>(1)</sup> in urban regional applications.

Line Haul	Regional	Urban	On/Off Road
<input type="checkbox"/>	<input checked="" type="checkbox"/>	<input checked="" type="checkbox"/>	<input type="checkbox"/>

Recommended  Acceptable



(1) Based on industry standard rolling resistance testing of comparable tires or retreads. Actual results may vary, and may be impacted by many factors, to include road conditions, weather and environment, driver performance, etc.

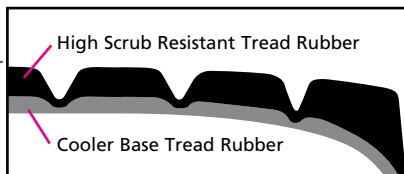
[www.business.michelinman.com](http://www.business.michelinman.com)



# THE MICHELIN® X ONE® XZU® S TIRE

All-position new generation wide base single designed for significant weight and fuel savings<sup>(1)</sup> in urban regional applications.

**75 mph speed capability and cool running temperatures** – with Michelin’s co-extrusion rubber technology.



**Long tread life in high scrub Urban/Regional service** – from application-specific tread compound.

**Extra protection against shocks and impacts** – from extra sidewall/shoulder thickness and aggressive protector rib design.

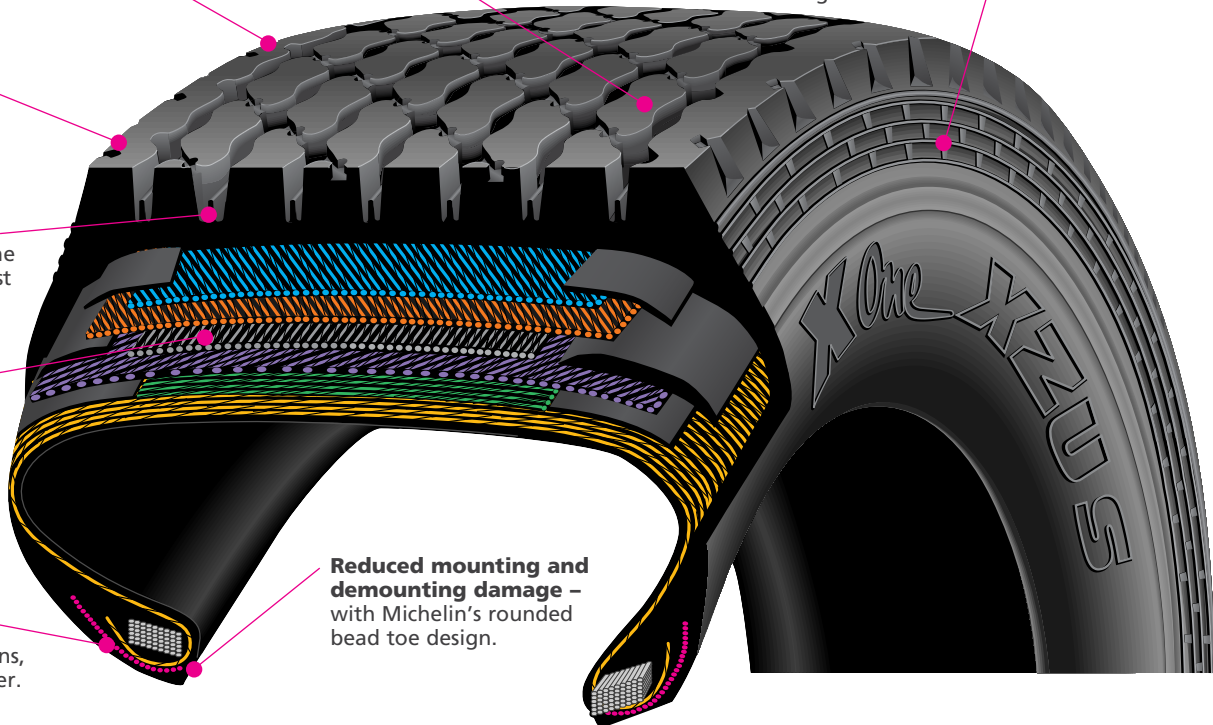
**Outstanding wet and soft soil traction** – with aggressive shoulder rib design.

**Groove bottom protectors** – in all 7 grooves to facilitate stone ejection and help protect against stone drilling.

**Extra protection against penetrations** – and exceptional tread stability for long tread life from Michelin’s Infini-Coil™ Technology which incorporates 1/4 mile of steel cable.

**Excellent protection** – from high bead temperatures, common in stop-start applications, through extended metallic chafer.

**Reduced mounting and demounting damage** – with Michelin’s rounded bead toe design.



Size	Load Range	Catalog Number	Tread Depth	Max. Speed (*)		Loaded Radius		Overall Diameter		Overall Width (‡)		Approved Wheel	Revs Per Mile	Max. Load and Pressure Single			
			32nds	mph	kph	in.	mm	in.	mm	in.	mm			lbs.	psi	kg.	kPa
455/55R22.5	M	28513	23	75	120	19.5	496	42.2	1071	17.7	450	14.00	493	11700	130	5300	900

(\*) Exceeding the lawful speed limit is neither recommended nor endorsed.

(‡) Overall widths will change 0.1 inch (2.5 mm) for each 1/4 inch change in wheel width.

MICHELIN® tires and tubes are subject to a continuous development program. Michelin North America, Inc. reserves the right to change product specifications at any time without notice or obligations. MNA, Inc. continually updates its product information to reflect any changes in Industry Standards. Printed material may not reflect the current Load and Inflation information. Please visit [www.michelintruck.com](http://www.michelintruck.com) for the latest product information. The actual load and inflation pressure used must not exceed the wheel manufacturer’s maximum conditions. Never exceed a wheel manufacturer’s limits without permission from the component manufacturer.

TO FIND OUT MORE  
 US: [business.michelinman.com](http://business.michelinman.com)  
 CA: [michelintruck.com/en\\_CA](http://michelintruck.com/en_CA)

FIND US ON FACEBOOK  
[michelintruck.com](http://michelintruck.com)

@ CONTACT US BY EMAIL  
 US: [business.michelinman.com/contact-us](http://business.michelinman.com/contact-us)  
 CA: [michelintruck.com/en\\_CA/contact-us](http://michelintruck.com/en_CA/contact-us)

CONTACT US BY TELEPHONE  
 US: 1-888-622-2306  
 CA: 1-888-622-2306