



LINE HAUL APPLICATIONS

# THE MICHELIN® X ONE® LINE ENERGY T2 PRE-MOLD RETREAD



## MICHELIN RETREAD TECHNOLOGIES

The MICHELIN® X ONE® LINE ENERGY T2 Pre-Mold Retread is designed for improved tread wear while providing durability and fuel savings <sup>(1)</sup> to lower your total cost of ownership (TCO).

Line Haul	Regional	Urban	On/Off Road
<input checked="" type="checkbox"/> Recommended	<input type="checkbox"/> Acceptable	<input type="checkbox"/>	<input type="checkbox"/>



### Improved Wear

The MICHELIN® X ONE® LINE ENERGY T2 Pre-Mold Retread is designed for better wear vs. the MICHELIN® X One® Line Energy T Pre-Mold Retread it replaces.

- **New Tread Design** – Micro sipes and a solid shoulder help reduce irregular wear.
- **Broad, Optimized Contact Patch** – Spreads stress evenly across the tread to promote clean, even wear.
- **Tread Depth** – Full 13/32nds of rubber

### Mileage Performance Promise

If the MICHELIN® X ONE® LINE ENERGY T2 Pre-Mold Retread does not improve your mileage performance over the Bandag® B135 Fuel Tech™ Retread by 10%, Michelin will reimburse the fleet the difference in price. See [business.michelinman.com](http://business.michelinman.com) for details.

### Durability

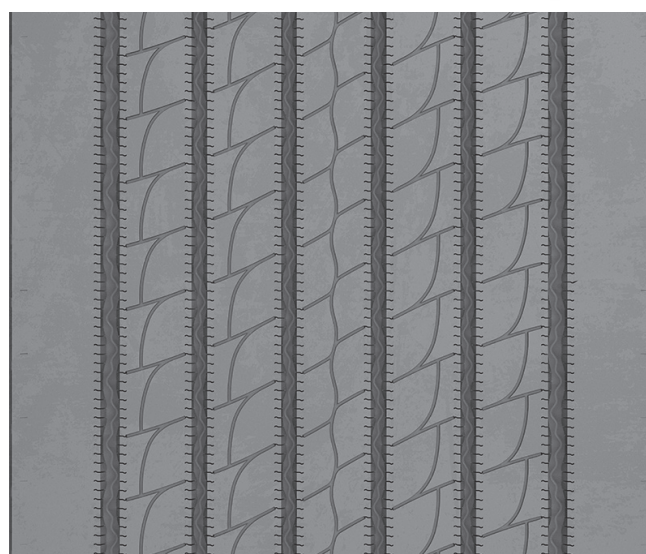
- **Winged Tread** – Provides maximum shoulder adhesion to the casing
- **Waved Groove Bottoms** – Helps prevent stone drilling

### Fuel Savings

- Meets SmartWay® requirements

### Driver Confidence

- **Outstanding Handling**
  - Optimized architecture
  - Wide grooves promote improved water evacuation



Axle Size	Metric	375/425 <sup>(2)</sup>
Tread Depth	Metric	10.5 mm
	Inches	13/32"

(1) The U.S. EPA as part of their SmartWay® Program has demonstrated incremental fuel savings when low rolling resistance tires are used just on the tractor and/or just on the trailer. Actual results may vary, and may be impacted by many factors, to include road conditions, weather, environment, combination of steer and drive tires used, driving habits, tire size, equipment, and maintenance.

(2) Tread widths with two measurements have wings. The first number is tread base width in mm. The second number is the overall width, wing tip to tip.

TO FIND OUT MORE  
US: [business.michelinman.com](http://business.michelinman.com)  
CA: [michelintruck.com/en\\_CA](http://michelintruck.com/en_CA)

FIND US ON FACEBOOK  
[michelintruck.com](http://michelintruck.com)

VISIT US ON THE WEB  
US: [business.michelinman.com/contact-us](http://business.michelinman.com/contact-us)  
CA: [michelintruck.com/en\\_CA/contact-us](http://michelintruck.com/en_CA/contact-us)

CONTACT US BY TELEPHONE  
US: 1-888-622-2306  
CA: 1-888-622-2306

Michelin North America, Inc., One Parkway South, Greenville, SC 29615  
Michelin North America (Canada), Inc., 2500 Daniel Johnson Blvd., Suite 500, Laval (QC) H7T 2P6  
© 2021 MNA(C). All rights reserved. PDF Only.  
© 2021 Michelin North America, Inc. All rights reserved. An Equal Opportunity Employer (06/21)

[business.michelinman.com](http://business.michelinman.com)

