

MICHELIN **AGRIBIB ROW CROP IF**



**Even more benefits
for row crop work**



@MichelinAgriUK



agro.michelin.com



www.youtube.com/user/AgMichelin



MICHELIN

MICHELIN AGRIBIB ROW CROP IF

Tire specifications and pressure table. Load per tire in kg.

| Ø INCHES | DESCRIPTION | CAI | e (mm) | D (mm) | R' (mm) | RC (mm) | Recommended rim | Acceptable rims | Tube (code) | 75% internal volume (litres) | Tread depth (mm) | | | | |
|-------------|---|--------------|--------------|--------------|--------------|--------------|--------------------|---|----------------|------------------------------------|------------------------|--------------|--------------|--------------|--------------|
| 38 | AGRIBIB ROW CROP IF 320/85 R38 151A8/151B TL | 351097 | 330 | 1506 | 697 | 4496 | DW11A | DW10A W10 W11 | 779 | 169 | 41 | | | | |
| Bar (Psi) | 1.20 (17) | 1.40 (20) | 1.60 (23) | 1.80 (26) | 2.00 (29) | 2.20 (32) | 2.40 (35) | 2.60 (38) | 2.80 (41) | 3.00 (44) | 3.20 (46) | 3.40 (49) | 3.60 (52) | 3.80 (55) | 4.00 (58) |
| 10 km/h | 2025 | 2250 | 2475 | 2590 | 2700 | 2790 | 2875 | 3015 | 3150 | 3275 | 3400 | 3515 | 3625 | 3715 | 3800 |
| 20 km/h | 1975 | 2200 | 2425 | 2540 | 2650 | 2740 | 2825 | 2965 | 3100 | 3225 | 3350 | 3465 | 3575 | 3650 | 3725 |
| 30 km/h | 1900 | 2115 | 2325 | 2440 | 2550 | 2640 | 2725 | 2850 | 2975 | 3100 | 3225 | 3325 | 3425 | 3515 | 3600 |
| 50 km/h | 1825 | 2040 | 2250 | 2350 | 2450 | 2540 | 2625 | 2750 | 2875 | 2990 | 3100 | 3200 | 3300 | 3375 | 3450 |
| | | | | | | | | | | | | | | | |
| 46 | AGRIBIB ROW CROP 340/85 R46 150A8/150B TL | 846786 | 338 | 1747 | 810 | 5227 | W12 | DW10A W10 W12A | 835 | 225 | 41 | | | | |
| Bar (Psi) | 1.20 (17) | 1.40 (20) | 1.60 (23) | 1.80 (26) | 2.00 (29) | 2.20 (32) | 2.40 (35) | 2.60 (38) | 2.80 (41) | 3.00 (44) | 3.20 (46) | 3.40 (49) | 3.60 (52) | 3.80 (55) | 4.00 (58) |
| 10 km/h Cyc | | | 2780 | 3025 | 3265 | 3510 | 3750 | 3900 | 4050 | 4200 | 4350 | 4540 | 4730 | 4880 | 5030 |
| 25 km/h Cyc | 2260 | 2495 | 2730 | 2855 | 2980 | 3105 | 3230 | 3385 | 3535 | 3690 | 3840 | 3965 | 4090 | | |
| 30 km/h Cyc | 2110 | 2330 | 2550 | 2670 | 2785 | 2905 | 3020 | 3165 | 3305 | 3450 | 3590 | 3705 | 3820 | | |
| 25 km/h | 2050 | 2270 | 2490 | 2605 | 2715 | 2830 | 2940 | 3080 | 3220 | 3360 | 3500 | 3610 | 3720 | | |
| 30 km/h | 1980 | 2190 | 2400 | 2510 | 2620 | 2730 | 2840 | 2975 | 3105 | 3240 | 3370 | 3475 | 3580 | | |
| 50 km/h | 1850 | 2045 | 2240 | 2345 | 2445 | 2550 | 2650 | 2775 | 2900 | 3025 | 3150 | 3250 | 3350 | | |
| | | | | | | | | | | | | | | | |
| 46 | AGRIBIB ROW CROP IF 380/90 R46 165A8/165B TL | 120462 | 382 | 1844 | 852 | 5513 | DW13A | DW12A DW13 W12 W12A W13 W13A | 835 | 308 | 48 | | | | |
| Bar (Psi) | 1.20 (17) | 1.40 (20) | 1.60 (23) | 1.80 (26) | 2.00 (29) | 2.20 (32) | 2.40 (35) | 2.60 (38) | 2.80 (41) | 3.00 (44) | 3.20 (46) | 3.40 (49) | 3.60 (52) | 3.80 (55) | 4.00 (58) |
| 10 km/h | 3000 | 3340 | 3675 | 3850 | 4025 | 4150 | 4275 | 4475 | 4675 | 4890 | 5100 | 5240 | 5375 | 5525 | 5675 |
| 20 km/h | 2950 | 3290 | 3625 | 3790 | 3950 | 4065 | 4175 | 4390 | 4600 | 4800 | 5000 | 5140 | 5275 | 5415 | 5550 |
| 30 km/h | 2825 | 3150 | 3475 | 3640 | 3800 | 3915 | 4025 | 4225 | 4425 | 4615 | 4800 | 4940 | 5075 | 5215 | 5350 |
| 50 km/h | 2725 | 3040 | 3350 | 3500 | 3650 | 3765 | 3875 | 4065 | 4250 | 4440 | 4625 | 4750 | 4875 | 5015 | 5150 |
| | | | | | | | | | | | | | | | |
| 50 | AGRIBIB ROW CROP IF 320/90 R50 158A8/158B TL | 125798 | 322 | 1849 | 865 | 5544 | DW11 | DW10A W10 W10A W11 | 816 | 225 | 42 | | | | |
| Bar (Psi) | 1.20 (17) | 1.40 (20) | 1.60 (23) | 1.80 (26) | 2.00 (29) | 2.20 (32) | 2.40 (35) | 2.60 (38) | 2.80 (41) | 3.00 (44) | 3.20 (46) | 3.40 (49) | 3.60 (52) | 3.80 (55) | 4.00 (58) |
| 10 km/h | 2450 | 2725 | 3000 | 3140 | 3275 | 3390 | 3500 | 3665 | 3825 | 3975 | 4125 | 4265 | 4400 | 4540 | 4675 |
| 20 km/h | 2400 | 2665 | 2925 | 3075 | 3225 | 3325 | 3425 | 3590 | 3750 | 3900 | 4050 | 4190 | 4325 | 4465 | 4600 |
| 30 km/h | 2300 | 2565 | 2825 | 2965 | 3100 | 3200 | 3300 | 3465 | 3625 | 3765 | 3900 | 4025 | 4150 | 4290 | 4425 |
| 50 km/h | 2225 | 2475 | 2725 | 2850 | 2975 | 3075 | 3175 | 3325 | 3475 | 3615 | 3750 | 3875 | 4000 | 4125 | 4250 |

IMPORTANT:

The inflation pressure is always determined according to the load per tire, speed and work to be carried out and according to the legislation in force in the country.
 10, 25 and 30 km/h Cyc: Work with cyclic load, field use only.
 25, 30 and 50 km/h: use on the road up to 25, 30 and 50 km/h.



@MichelinAgriUK



agro.michelin.com



www.youtube.com/user/AgMichelin

MICHELIN



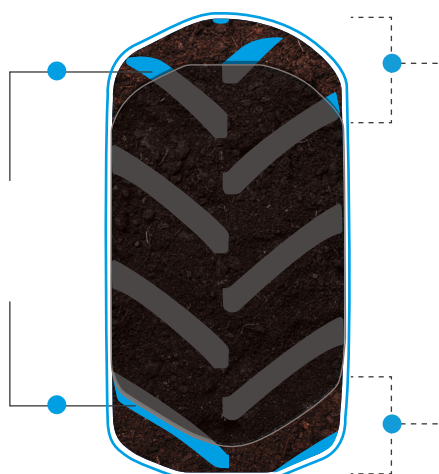
Tire specifications and pressure table. Load per tire in kg.

| Ø INCHES | DESCRIPTION | | | CAI | e (mm) | D (mm) | R' (mm) | RC (mm) | Recommended rim | Acceptable rims | Tube (code) | 75% internal volume (litres) | Tread depth (mm) | | |
|-------------|---|--------------|--------------|--------------|--------------|--------------|--------------|--------------|--------------------|-----------------------|----------------|------------------------------------|------------------------|--------------|--------------|
| 50 | AGRIBIB ROW CROP IF 380/90 R50 167A8/167B TL | | | 212359 | 395 | 1953 | 903 | 5841 | DW13A | DW12A W12A W13A | | 329 | 47 | | |
| Bar (Psi) | 1.20 (17) | 1.40 (20) | 1.60 (23) | 1.80 (26) | 2.00 (29) | 2.20 (32) | 2.40 (35) | 2.60 (38) | 2.80 (41) | 3.00 (44) | 3.20 (46) | 3.40 (49) | 3.60 (52) | 3.80 (55) | 4.00 (58) |
| 10 km/h | 3200 | 3500 | 3800 | 4040 | 4275 | 4415 | 4550 | 4750 | 4950 | 5165 | 5375 | 5525 | 5675 | 5840 | 6000 |
| 20 km/h | 3125 | 3425 | 3725 | 3950 | 4175 | 4315 | 4450 | 4650 | 4850 | 5065 | 5275 | 5415 | 5550 | 5715 | 5875 |
| 30 km/h | 3025 | 3315 | 3600 | 3815 | 4025 | 4165 | 4300 | 4490 | 4675 | 4875 | 5075 | 5215 | 5350 | 5515 | 5675 |
| 50 km/h | 2900 | 3175 | 3450 | 3665 | 3875 | 4000 | 4125 | 4315 | 4500 | 4690 | 4875 | 5015 | 5150 | 5300 | 5450 |

| 54 AGRIBIB ROW CROP IF 320/90 R54 159A8/159B TL | | | | 467712 | 322 | 1949 | 915 | 5848 | DW11 | DW10 W10 W11 | 816 | 240 | 42 | | |
|--|--------------|--------------|--------------|--------------|--------------|--------------|--------------|--------------|--------------|--------------------|--------------|--------------|--------------|--------------|--------------|
| Bar (Psi) | 1.20 (17) | 1.40 (20) | 1.60 (23) | 1.80 (26) | 2.00 (29) | 2.20 (32) | 2.40 (35) | 2.60 (38) | 2.80 (41) | 3.00 (44) | 3.20 (46) | 3.40 (49) | 3.60 (52) | 3.80 (55) | 4.00 (58) |
| 10 km/h | 2550 | 2840 | 3125 | 3275 | 3425 | 3540 | 3650 | 3825 | 4000 | 4150 | 4300 | 4450 | 4600 | 4715 | 4825 |
| 20 km/h | 2500 | 2775 | 3050 | 3200 | 3350 | 3465 | 3575 | 3750 | 3925 | 4075 | 4225 | 4365 | 4500 | 4615 | 4725 |
| 30 km/h | 2400 | 2675 | 2950 | 3090 | 3225 | 3340 | 3450 | 3615 | 3775 | 3925 | 4075 | 4215 | 4350 | 4450 | 4550 |
| 50 km/h | 2325 | 2575 | 2825 | 2965 | 3100 | 3215 | 3325 | 3475 | 3625 | 3775 | 3925 | 4050 | 4175 | 4275 | 4375 |

ON THE GROUND,
MICHELIN **AGRIBIB ROW CROP IF*** OFFERS...

+14%
**GREATER
LUG CONTACT**
FOR BETTER TRACTION



+20%
BIGGER FOOTPRINT
TO BETTER DISTRIBUTE THE LOAD,
CAUSING LESS SOIL COMPACTION



* vs AGRIBIB ROW CROP normal flex

Compared in Ladoux (France) in September 2020 on size 380/90 R50.
Load of 3600 kilos (30 km/h condition).



@MichelinAgriUK



agro.michelin.com



www.youtube.com/user/AgMichelin



MICHELIN

MICHELIN AGRIBIB ROW CROP IF



20% deeper tread depth

- Excellent traction
- More rubber to wear out

The R1W* standard indicates a higher sculpture height by 20% than an equivalent R1 tire

* TRA Standard (The Tire and Rim Association, Inc.)

MICHELIN Ultraflex (IF versions)

- Less soil compaction throughout the tire's entire life

"Improved Flexion" (IF) structure of an agricultural tractor drive wheel tire in which the carcass is more resistant than that of a corresponding standard tire.

* ETRTO standard

New reinforced casing (IF versions)

- Tougher tire
- Improved load capacity thanks to a nominal pressure of 4 bars (vs. 2.4 or 3.6 depending on the sizes)



High load capacity



Great soil protection



Good traction

Available sizes

351097 IF 320/85 R38 151A8/151B TL (From April 2021)

846786 340/85 R46 150A8/150B T (On the market)

120462 IF 380/90 R46 165A8/165B TL (From June 2021)

125798 IF 320/90 R50 158A8/158B TL (From June 2021)

212359 IF 380/90 R50 167A8/167B TL (On the market)

467712 IF 320/90 R54 159A8/159B TL (From June 2021)

Michelin recommendations

Machine n° 1

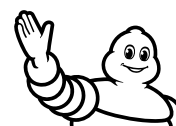
FRONT PRESSURE (bars / psi)

REAR PRESSURE (bars / psi)

Machine n° 2

FRONT PRESSURE (bars / psi)

REAR PRESSURE (bars / psi)



@MichelinAgriUK



agro.michelin.com



www.youtube.com/user/AgMichelin

MICHELIN