



MICHELIN® TRUCK TIRE REFERENCE CHART



US : business.michelinman.com

CA : michelintruck.com/en_CA

TABLE OF CONTENTS

STEER / ALL-POSITION TIRES	3	X ONE® LINE GRIP D.	16
X® LINE ENERGY Z	3	XDA®5+	16
X® LINE ENERGY Z - 295	3	X® MULTI ENERGY D	16
X® LINE ENERGY Z COACH.	3	XDS®	17
X® MULTI Z - 275	4	XDS®2 Standard Sizes.	17
XRV®	4	XDS®2 19.5	17
XZA®	4	X® MULTI D	18
X® COACH Z	5	X® MULTI D 19.5	18
X® MULTI ENERGY Z2	5	X® MULTI D 295	18
X® MULTIWAY HD XZE®	5	XPS TRACTION®	19
X® MULTI Z 17.5	6	X® INCITY GRIP D.	19
X® MULTI Z 19.5	6	X® INCITY GRIP D SL	19
XPS RIB®	7	X® WORKS D	20
XZU®S2.	7	X® WORKS GRIP D	20
XFE WIDE BASE (STEER)	7	X® WORKS XDY®	20
XZE®	8		
XZE 2™ STANDARD SIZES	8	TRAILER Tires.	21
XZA® 17.5.	9	X ONE® LINE ENERGY T2	21
X ONE® XZU®S	9	X® LINE ENERGY T2	21
X® INCITY ENERGY Z	10	X® LINE ENERGY T 19.5	22
X® INCITY Z	10	XTA®2 ENERGY	22
X® INCITY Z SL	10	XTE®	23
AGILIS® CROSSCLIMATE®	11	X ONE® MULTI ENERGY T.	23
X® WORKS Z	12	XTE2®	23
X ONE® XZY®3	12	X ONE® MULTI T.	24
XZY® 3 WIDE BASE	12	X® MULTI T2 17.5.	24
XZL™	13	X® MULTI T2	24
XZL+™	13	XTY®2.	25
XZL™ WIDE BASE	13		
DRIVE TIRES.	14	PRODUCT AVAILABILITY	26
X ONE® LINE ENERGY D.	14	LINE HAUL	26
X® LINE ENERGY D+.	14	REGIONAL	28
X® LINE ENERGY D.	14	URBAN	30
XDN®2	15	ON/OFF ROAD	31
XDN®2 GRIP	15	OFF ROAD.	31
XDE®2+	15		

Michelin North America, Inc. continually updates its product information to reflect any changes in Industry Standards. Printed material may not reflect the current Load and Inflation information.

Please visit business.michelinman.com for the latest product information. The actual load and inflation pressure used must not exceed the wheel manufacturer's maximum conditions. Never exceed a wheel manufacturer's limits without permission from the component manufacturer.

STEER / ALL-POSITION TIRES

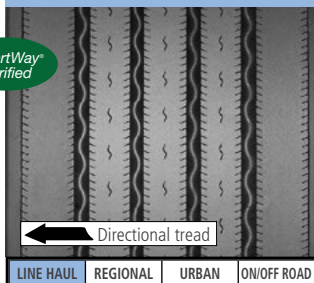
X[®] LINE ENERGY Z

The MICHELIN[®] X[®] LINE ENERGY Z tire is guaranteed to deliver 20% more mileage vs. leading competitor line haul steer tires ⁽¹⁾.

- Get more mileage without compromising fuel efficiency* with the patent-pending Dual Compound Tread.
- Even wear to the end of tread life due to directional miniature sipes in the groove walls (directional to half life).
- Approved for use on EPA SmartWay[®] certified equipment and meets California CARB requirements.
- 7/7/3 manufacturer's limited casing warranty ⁽²⁾

SmartWay[®]
Verified

LINE HAUL & BUS/RV



Sizes	Load Range	Tread Depth	MSPN
11R22.5	G	19	03363
11R22.5	H	19	06697
275/80R22.5	G	19	03885
275/80R22.5	H	19	66205
11R24.5	H	19	18748
275/80R24.5	H	19	81281

(1) Please see business.michelinman.com > Reference Materials > Warranties/Guarantees for details.

(2) 7/7/3 Manufacturer's Limited Casing Warranty: 7 Year or 700,000 Mile or 3-Retread Limited Warranty for MICHELIN[®] X[®] LINE ENERGY Z tire when retreaded by an authorized Michelin Retread Technologies (MRT) Dealer only. See limited warranty for details.

X[®] LINE ENERGY Z - 295

An ultra fuel efficient, all position tire for auto-hauler applications, with enhanced casing durability.

- Designed for improved wear life and better reduction in rolling resistance. ⁽¹⁾
- Infini-Coil[®] Belt Technology – Optimizes the shape of the contact patch for longer tread life and strengthens the crown against shocks and impacts.
- Syphon Groove – A new regenerating tread design that at 5/32nds fully exposes two additional circumferential grooves, which increases the ability to evacuate liquid material in later tread life.

(1) When compared to Michelin[®] XZA[®]2 Energy tire.

(2) "No bus shall be operated with regrooved, recapped or retreaded tires on the front wheels." US Code of Federal Regulations: Title 49, Transportation; Part 393.75.

LINE HAUL, REGIONAL & BUS/RV



Sizes	Load Range	Tread Depth	MSPN
295/60R22.5 (2)	J	14	35378

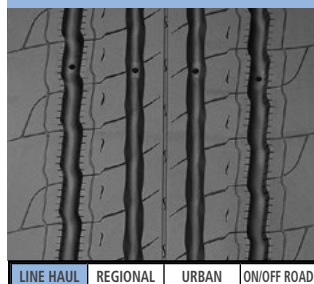
X[®] LINE ENERGY Z COACH

Improved fuel-efficient*, all position service in long distance applications such as Highway Coach. ⁽¹⁾

- New tread compound designed for lower reduction in rolling resistance.
- Groove Wall Miniature Sipes – Helps fight irregular wear to improve mileage.
- Increased net contact area allowing more rubber on the road.
- Zig-Zag Grooves – Improves traction in new and worn tire conditions.

(1) "No bus shall be operated with regrooved, recapped or retreaded tires on the front wheels." US Code of Federal Regulations: Title 49, Transportation; Part 393.75.

LINE HAUL & BUS/RV



Sizes	Load Range	Tread Depth	MSPN
315/80R22.5 (1)	L	17	09807

* Based on industry standard rolling resistance testing of comparable tires or retreads. Actual results may vary, and may be impacted by many factors, to include road conditions, weather and environment, driver performance, etc.

Exceeding the legal speed limit is neither recommended nor endorsed.

Recommended Acceptable

STEER / ALL-POSITION TIRES

X® MULTI Z - 275

Improved all-position radial optimized for RV chassis⁽¹⁾ and specialty trailer in regional and line haul applications.

- Better rolling resistance designed for improved wear and fuel savings.
- Increased net contact area designed for improved grip.
- Exceptional traction from zig zag sipe design which delivers outstanding wet grip on slippery surfaces.
- Outstanding resistance to stone damage due to groove bottom protectors as well as angled groove walls to reduce stone retention.

(1) "No bus shall be operated with regrooved, recapped or retreaded tires on the front wheels." US Code of Federal Regulations: Title 49, Transportation; Part 393.75.

LINE HAUL, REGIONAL, & BUS/RV



LINE HAUL REGIONAL URBAN ON/OFF ROAD

Sizes	Load Range	Tread Depth	MSPN
275/70R22.5 (1)	J	18	31513

XRV®

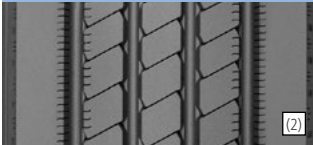
All-position radial designed specifically for exceptional performance on recreational vehicles and motor homes in coach applications.⁽¹⁾

- Wide, "see-through" grooves promote drainage efficiency to help improve traction on wet surfaces.
- Multi-siping helps deliver dependable grip and long, even wear.
- Enlarged sidewall characters make load/pressure information easier to read, facilitating proper use and maintenance.
- Stable tread with cool running compound helps generate reduced squirm and lower heat for improved handling and durability.

(1) "No bus shall be operated with regrooved, recapped or retreaded tires on the front wheels." US Code of Federal Regulations: Title 49, Transportation; Part 393.75

(2) Standard Sizes
(3) 305/70R22.5

LINE HAUL & BUS/RV



LINE HAUL REGIONAL URBAN ON/OFF ROAD

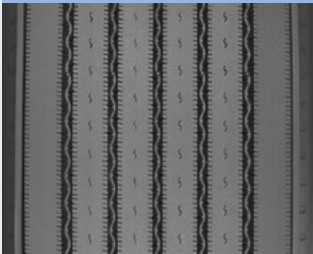
Sizes	Load Range	Tread Depth	MSPN
235/80R22.5 (1,2)	G	16	87511
255/80R22.5 (1,2)	G	16	59634
305/70R22.5 (1,3)	L	16	93499

XZA®

Fuel-efficient, * all-position radial designed for long life steer axle service in line haul applications.

- No compromise rolling resistance delivered with Advanced Technology Compound, offering low rolling resistance with no compromise in wet traction, mileage, durability and even wear.
- Wet traction is improved using 3,000 trapezoidal micro sipes on the groove edges to help break water surface tension.
- Infini-Coil® incorporates over 1/4 mile of steel cable to help eliminate casing growth and ensure a consistent footprint.

LINE HAUL & BUS/RV



LINE HAUL REGIONAL URBAN ON/OFF ROAD

Sizes	Load Range	Tread Depth	MSPN
365/70R22.5	L	19	52215

* Based on industry standard rolling resistance testing of comparable tires or retreads. Actual results may vary, and may be impacted by many factors, to include road conditions, weather and environment, driver performance, etc.

Exceeding the legal speed limit is neither recommended nor endorsed.

Recommended Acceptable

STEER / ALL-POSITION TIRES

X® COACH Z

Designed with safety, grip and performance at the forefront for coach and bus ⁽²⁾ fleets operating in regional and line haul environments.

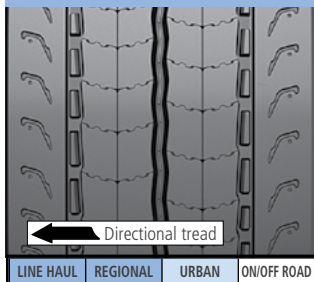
- Infini-Coil® Technology – provides a stable footprint and helps to protect the casing from road hazards due to a ¼ mile of steel cable wrapped circumferentially around the casing.
- Designed for improved mileage based on the increased rubber contact and stable footprint designed to reduce irregular wear.
- Regenion Tread Sculpture evolves, opening two additional circumferential grooves for water evacuation, to help provide wet grip when new or worn.



(1) Meets the USTMA (U.S. Tire Manufacturers Association) snow traction performance requirements. Meets the Tire and Rubber Association of Canada (TRAC) requirements for severe snow traction.

(2) "No bus shall be operated with regrooved, recapped or retreaded tires on the front wheels." US Code of Federal Regulations: Title 49, Transportation; Part 393.75.

REGIONAL & BUS/RV



Sizes	Load Range	Tread Depth	MSPN
295/80R22.5 ⁽²⁾	H	18	53962

X® MULTI ENERGY Z2

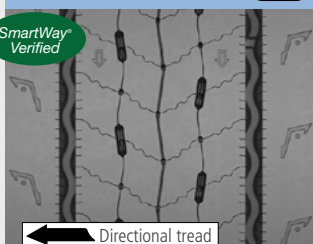
Challenging the traditional trade off, and setting new standards, in fuel efficiency, traction and mileage performance for super regional and regional applications.

- Fuel Efficiency – Derived from Michelin's advanced compounding coupled with dual layers for fuel efficiency and tread durability.
- Superior Traction – Matrix siping provides additional traction throughout tread life.
- Regenion Tread Sculpture
 - Alternating channel groove design that evolves as the tread wears, providing water evacuation throughout life.
 - Rain drop groove at the midpoint of the crown provides additional water evacuation as the tread wears.
- Maximized Tread Life – Inclusion of microsisps and matrix siping help reduce the onset of irregular wear, maximizing usable tread life

REGIONAL



SmartWay®
Verified



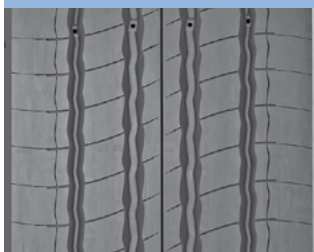
Sizes	Load Range	Tread Depth	MSPN
11R22.5	H	20	22514
295/75R22.5	H	20	08630

X® MULTIWAY HD XZE®

Improved mileage and exceptional handling, this all position tire delivers a smooth quiet ride and long life for heavy delivery vehicles in regional and suburban service.

- Improved load carrying capacity and longevity provided by Michelin's patented Infini-Coil®.
- Excellent mileage and even wear provided by chip & cut resistant tread compounds.
- Resistant to aggressions, impacts and shocks through robust 5-belt casing design.

REGIONAL



Sizes	Load Range	Tread Depth	MSPN
385/65R22.5	L	19	26281

* Based on industry standard rolling resistance testing of comparable tires or retreads. Actual results may vary, and may be impacted by many factors, to include road conditions, weather and environment, driver performance, etc.

Exceeding the legal speed limit is neither recommended nor endorsed.

Recommended Acceptable

STEER / ALL-POSITION TIRES

X® MULTI Z 17.5

All position radial tire optimized for steer axles on 4x2 delivery vehicles in regional and urban applications.⁽¹⁾

- New tread compound designed for lower rolling resistance and improved wear.
- Improved Grip design for greater net contact area (more rubber on the road).
- Extra strong curb guards help protect sidewalls against most impacts and abrasions for long casing life.



- (1) "No bus shall be operated with regrooved, recapped or retreaded tires on the front wheels." US Code of Federal Regulations: Title 49, Transportation; Part 393.75.
- (2) Meets the USTMA (U.S. Tire Manufacturers Association) snow traction performance requirements. Meets the Tire and Rubber Association of Canada (TRAC) requirements for severe snow traction.



REGIONAL



 **Directional tread**

LINE HAUL	REGIONAL	URBAN	ON/OFF ROAD
-----------	----------	-------	-------------

Sizes	Load Range	Tread Depth	MSPN
215/80R17.5 ⁽¹⁾	G	14	25151


X® MULTI Z 19.5

An all position radial tire optimized for a wide spectrum of regional applications.

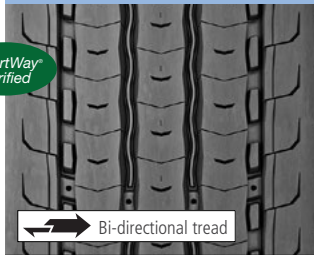
- New tread compound helps to increased fuel efficiency*
- Directional tread design helps to reduce irregular wear.
- Groove bottom protectors and stone ejectors help to reduce stone drilling to extend casing life.
- Four-belt package helps to protect against shocks, impacts and road hazards.




- (1) Meets the USTMA (U.S. Tire Manufacturers Association) snow traction performance requirements. Meets the Tire and Rubber Association of Canada (TRAC) requirements for severe snow traction.



REGIONAL & BUS/RV



 **Bi-directional tread**

LINE HAUL	REGIONAL	URBAN	ON/OFF ROAD
-----------	----------	-------	-------------

Sizes	Load Range	Tread Depth	MSPN
265/70R19.5	G	16	75319
285/70R19.5	H	16	31459

* Based on industry standard rolling resistance testing of comparable tires or retreads. Actual results may vary, and may be impacted by many factors, to include road conditions, weather and environment, driver performance, etc.

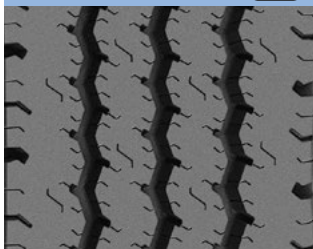
STEER / ALL-POSITION TIRES

XPS RIB®

All-steel, all-wheel-position highway rib light truck tire designed to deliver exceptional mileage and retreadability for commercial/fleet operations.

- Steel casing, reinforced steel bead helps deliver exceptional retreadability.
- Third steel belt helps provide puncture resistance for enhanced durability.
- Optimized rib tread designed to provide even tread wear and long mileage with low noise level.
- Sidewall protector helps provide resistance to sidewall damage from most curb scrubbing.
- Low rolling resistance casing and tread built for superior fuel economy.

REGIONAL & BUS/RV



LINE HAUL REGIONAL URBAN ON/OFF ROAD

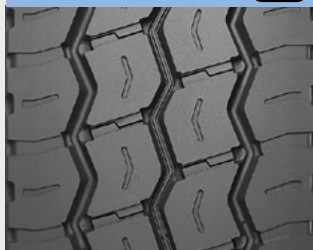
Sizes	Load Range	Tread Depth	MSPN
LT215/85R16	E	15	39510
LT225/75R16	E	14	08404
LT235/85R16	E	15	13080
LT245/75R16	E	15	26848

XZU®S2

Next generation all-position tire with high carrying capacity designed for exceptional treadlife in high scrub urban applications such as waste vehicles.

- Designed for increase in removal miles.
- Maximize mileage and casing life with Co-Ex Technology.
- Designed to protect the belt package from shocks and impacts with shock pads.
- Maximum sidewall protection provided by aggressive protector ribs.

REGIONAL & URBAN



LINE HAUL REGIONAL URBAN ON/OFF ROAD

Sizes	Load Range	Tread Depth	MSPN
315/80R22.5 (1)	L	23	77510

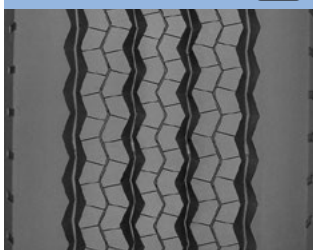
(1) Not approved for use with 8.25 wheel.

XFE WIDE BASE (STEER)

The wide base single designed to deliver high mileage and a quiet ride on heavy front axle in off-road and regional applications.

- Dual-compound tread rubber helps ensure cool operating temperatures, while abrasion-resistant rubber compound helps keep tire wear rate low.
- Deep, wide channels help provide excellent water evacuation throughout the life of the tire.
- Lateral siping along rib edges help enhance traction and braking in adverse weather conditions.
- Robust crown design with four-steel belt package.

REGIONAL



LINE HAUL REGIONAL URBAN ON/OFF ROAD

Sizes	Load Range	Tread Depth	MSPN
425/65R22.5	L	21	11829

* Based on industry standard rolling resistance testing of comparable tires or retreads. Actual results may vary, and may be impacted by many factors, to include road conditions, weather and environment, driver performance, etc.

Exceeding the legal speed limit is neither recommended nor endorsed.

Recommended Acceptable

STEER / ALL-POSITION TIRES

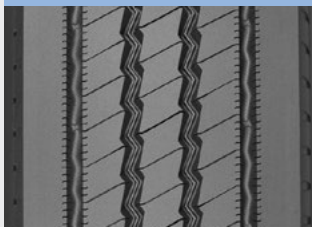
XZE®

Exceptional all-position radial with extra-wide, extra-deep tread designed to help deliver our best wear in high scrub regional and line haul applications.

- Beefy, buttressed shoulders help resist tearing and accelerated wear in high scrub applications.
- Extra strong curb guards help protect sidewalls against most impacts and abrasions for long casing life.
- Groove bottom protectors help deliver additional defense against stone drilling.
- Application specific, high scrub compound make the MICHELIN® XZE® our longest wearing regional steer tire.
- Deep, wide tread and optimized footprint shape help deliver long, even tread wear.

(1) ⌘ With chip and cut resistant tread compound.

REGIONAL & BUS/RV



LINE HAUL	REGIONAL	URBAN	ON/OFF ROAD
-----------	----------	-------	-------------

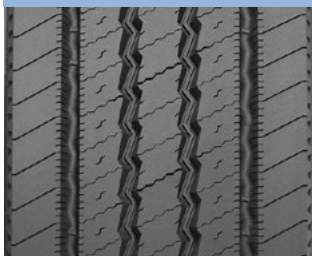
Sizes	Load Range	Tread Depth	MSPN
225/70R19.5	G	17	91043
245/70R19.5	H	18	75997
10R22.5	G	21	99141
12R22.5 ⌘(1)	H	22	85335
255/70R22.5 ⌘(1)	H	18	61737
275/80R22.5	H	22	01637

XZE 2™ STANDARD SIZES

Exceptional regional, all-position radial with extra-wide, extra-deep tread designed to help deliver our best wear in high scrub regional and urban applications.

- Enhanced application-specific compound to help promote resistance to aggressions and longer tread life.
- Wider tread designed for improved tread wear and handling.
- Matrix and micro sipes protect against irregular wear.
- Zig-zag grooves and sipes help increase traction in new and worn tire conditions.
- North American design.

REGIONAL & BUS/RV



LINE HAUL	REGIONAL	URBAN	ON/OFF ROAD
-----------	----------	-------	-------------

Sizes	Load Range	Tread Depth	MSPN
11R22.5	G	22	78390
11R22.5	H	22	67042
275/80R22.5	G	22	55895
11R24.5	G	22	91867
11R24.5	H	22	88507
275/80R24.5	G	22	75519
305/75R24.5	J	22	67251

* Based on industry standard rolling resistance testing of comparable tires or retreads. Actual results may vary, and may be impacted by many factors, to include road conditions, weather and environment, driver performance, etc.

Exceeding the legal speed limit is neither recommended nor endorsed.

Recommended Acceptable

STEER / ALL-POSITION TIRES

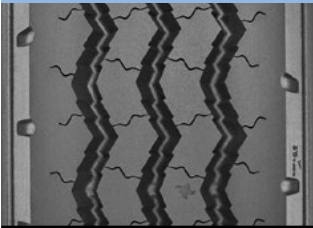
XZA® 17.5

Fuel-efficient*, all-position radial designed for long life steer axle service in line haul applications.

- Massive shoulders and application specific compound help resist scrub and abrasion, extending tread life.
- Zig-zag groove design for true all-position use.



REGIONAL



LINE HAUL	REGIONAL	URBAN	ON/OFF ROAD
-----------	----------	-------	-------------

Sizes	Load Range	Tread Depth	MSPN
10R17.5	G	16	05008

XONE® XZU®S

All-position next generation wide base single designed for significant weight and fuel savings* in urban applications.

- Long tread life and outstanding scrub resistance in Urban/Regional service with 23/32nd original tread depth of application-specific compound.
- Flat, stable contact area for long, even wear provided by Michelin's Infini-Coil®, featuring a 1/4 mile of steel cable to help eliminate casing growth.
- Enhanced protection against stone drilling from variable pitch groove walls and groove bottom protectors in all grooves.



REGIONAL & URBAN



LINE HAUL	REGIONAL	URBAN	ON/OFF ROAD
-----------	----------	-------	-------------

Sizes	Load Range	Tread Depth	MSPN
455/55R22.5	M	23	28513

* Based on industry standard rolling resistance testing of comparable tires or retreads. Actual results may vary, and may be impacted by many factors, to include road conditions, weather and environment, driver performance, etc.

Exceeding the legal speed limit is neither recommended nor endorsed. Recommended Acceptable

STEER / ALL-POSITION TIRES

X® INCITY ENERGY Z

The all-position urban radial tire designed and optimized for new generation electric transit buses.

- Designed to withstand tough urban transit conditions.
- Longer tread life with scrub resistant compound.
- Over 500 3D Matrix sipes deliver traction on slippery surfaces throughout the life of the tire.
- Our most energy efficient transit tire that delivers long tread life.



Meets the USTMA (U.S. Tire Manufacturers Association) snow traction performance requirements. Meets the Tire and Rubber Association of Canada (TRAC) requirements for severe snow traction.

(1) "No bus shall be operated with regrooved, recapped or retreaded tires on the front wheels." US Code of Federal Regulations: Title 49, Transportation; Part 393.75.



URBAN



LINE HAUL	REGIONAL	URBAN	ON/OFF ROAD
-----------	----------	-------	-------------

Sizes	Load Range	Tread Depth	MSPN
315/80R22.5 (1)	L	16	10182

X® INCITY Z

Designed for improved mileage, longer tread life, and durability in an all-position tire designed for the challenges of urban conditions.⁽¹⁾

- Extra Thick Sidewall – Strong protection against shocks, impacts and curb scrub.
- Outstanding traction with Matrix Siping which provides inter-locking action which offers excellent traction and even wear.
- Casing life is extended through the heat reducing impact of the rectangular bead bundle and an extended metallic chafer ply that protects against mounting damage and brake heat.



(1) "No bus shall be operated with regrooved, recapped or retreaded tires on the front wheels." US Code of Federal Regulations: Title 49, Transportation; Part 393.75.

(2) Meets the USTMA (U.S. Tire Manufacturers Association) snow traction performance requirements. Meets the Tire and Rubber Association of Canada (TRAC) requirements for severe snow traction.



URBAN



LINE HAUL	REGIONAL	URBAN	ON/OFF ROAD
-----------	----------	-------	-------------

Sizes	Load Range	Tread Depth	MSPN
11R22.5	H	20	13712
275/70R22.5 (1)	J	21	59714
305/70R22.5 (1)	L	22	02348

X® INCITY Z SL

An all-position tire designed for the challenges of urban transit operations.⁽¹⁾ This is a Single Life tire that offers optimized mileage and durability.

- Durable and Dependable – Designed to withstand tough conditions with extra thick sidewalls that helps to protect against shocks.
- Longer tread life with scrub resistant compound which is designed to help to fight irregular treadwear in urban bus conditions.
- Outstanding traction with Matrix Siping which provides inter-locking action which offers excellent traction and even wear.

(1) "No bus shall be operated with regrooved, recapped or retreaded tires on the front wheels." US Code of Federal Regulations: Title 49, Transportation; Part 393.75.



URBAN



LINE HAUL	REGIONAL	URBAN	ON/OFF ROAD
-----------	----------	-------	-------------

Sizes	Load Range	Tread Depth	MSPN
305/85R22.5 (1)	J	24	62156

* Based on industry standard rolling resistance testing of comparable tires or retreads. Actual results may vary, and may be impacted by many factors, to include road conditions, weather and environment, driver performance, etc.

Exceeding the legal speed limit is neither recommended nor endorsed.

Recommended

Acceptable

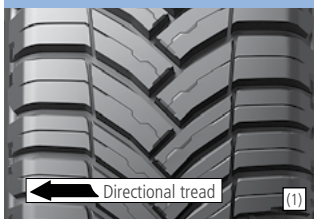
AGILIS® CROSSCLIMATE®

Our Most Durable Heavy Duty Light Commercial Truck Tire – An all-season Light Truck tire that offers exceptional durability, mileage, and wet braking for high stress commercial applications.

- CurbGard™ Sidewall Protectors – Resist curb scrubbing in urban environments.
- MaxPressure Profile™ optimizes the tire footprint for better wear life under high pressure, heavy loads, high torque, and stop and go driving.
- StabiliBlok™ Design – Provides wider and longer tread blocks, to resist extreme torque while providing cool operating temperatures under full load at high speed.
- SipeLock™ Technology – Provides hundreds of biting edges for improved wet and snow traction without sacrificing tread block stability.

Size Load/Speed Rating	Load Range	Tread Depth	MSPN
185/60R15C 94T ^(1,3)	C	11.5	02998
205/65R15C 102/100T ^(1,3)	C	11.5	04143
195/75R16C 107/105R ^(1,3)	D	11.5	56761
205/75R16C 113/111R ^(1,3)	E	11.5	83769
225/75R16C 121/120R ^(1,3)	E	11.5	70411
235/65R16C 121/119R ^(1,3)	E	11.5	09118
LT215/85R16 115/112R ⁽²⁾	E	12.5	80033
LT225/75R16 115/112R ⁽²⁾	E	12.5	72022
LT235/85R16 120/116R ⁽²⁾	E	12.5	65681
LT245/75R16 120/116R ⁽²⁾	E	12.5	52347
LT265/75R16 123/120R ⁽²⁾	E	12.5	10257
LT235/80R17 120/117R ⁽²⁾	E	12.5	09723
LT245/70R17 119/116R ⁽²⁾	E	12.5	42604
LT245/75R17 121/118R ⁽²⁾	E	12.5	09917
LT265/70R17 121/118R ⁽²⁾	E	12.5	36185
LT285/70R17 121/118R ⁽²⁾	E	12.5	83162
LT265/70R18 124/121R ⁽²⁾	E	12.5	05791
LT275/65R18 123/120R ⁽²⁾	E	12.5	57222
LT275/70R18 125/122R ⁽²⁾	E	12.5	76555
LT265/60R20 121/118R ⁽²⁾	E	12.5	50977
LT275/65R20 126/123R ⁽²⁾	E	12.5	15627
LT285/60R20 125/122R ⁽²⁾	E	12.5	19604

URBAN



(1, 2) Tread Design as indicated on the tire pictures.

(3) Directional tread design.



Meets the USTMA (U.S. Tire Manufacturers Association) snow traction performance requirements. Meets the Tire and Rubber Association of Canada (TRAC) requirements for severe snow traction.

* Based on industry standard rolling resistance testing of comparable tires or retreads. Actual results may vary, and may be impacted by many factors, to include road conditions, weather and environment, driver performance, etc.

Exceeding the legal speed limit is neither recommended nor endorsed.

STEER / ALL-POSITION TIRES

X® WORKS Z

Our toughest all-position, on/off-road tire just got tougher.⁽¹⁾ This tire provides unsurpassed durability against road hazards—guaranteed.

- Tougher casing durability to help increase uptime and capping due to a 50% wider groove-to-groove protector ply and a thicker layer of shock absorbing cushion gum.⁽²⁾
- Backed by Michelin's six-month worry-free road hazard guarantee.⁽³⁾

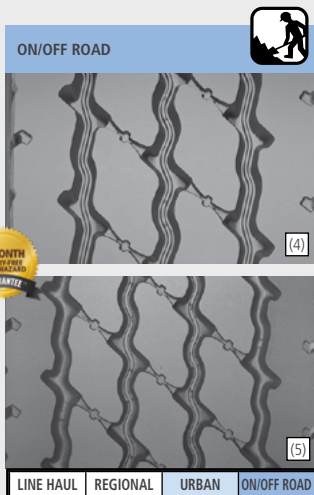
Sizes	Load Range	Tread Depth	MSPN
11R22.5 ⁽⁴⁾	H	24	15701
12R22.5 ⁽⁴⁾	H	24	11073
315/80R22.5 ⁽⁵⁾	L	23	64204
11R24.5 ⁽⁴⁾	H	24	78261

(1) Results based on three small-scale internal field tests using customer fleet vehicles vs. MICHELIN® XZY® 3 in size 11R24.5 LRH. Actual results may vary.

(2) Protector ply width & cushion gum thickness compared to Bridgestone M843 & M853, and Goodyear® G751™ MSA Duraseal in size 11R22.5 LRH.

(3) 6-Month Worry-Free Road Hazard Guarantee: Contact your local Michelin representative for details.

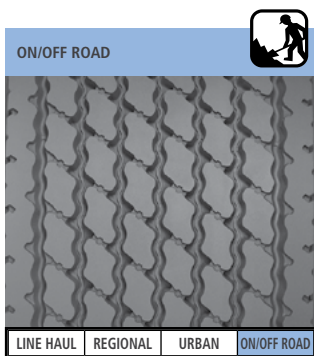
(4, 5) Tread Design as indicated on the tire pictures.



X ONE® XZY® 3

All-position wide base single designed for significant weight and fuel savings* in on/off road applications.

- Long tread life and outstanding chip and cut resistance in on/off road service with application-specific compound.
- Flat, stable contact area for long, even wear provided by Michelin's Infini-Coil®, featuring a 1/4 mile of steel cable to help eliminate casing growth.
- Enhanced protection against stone drilling from variable pitch groove walls and groove bottom protectors in center grooves.



Sizes	Load Range	Tread Depth	MSPN
455/55R22.5	M	23	11629

XZY® 3 WIDE BASE

Exceptional all-position wide base radial designed for heavy front axle mixed service in on/off road applications.

- Improved traction in soft soil and mud promoted by aggressive new tread design.
- Great resistance to shocks, bruising and penetrations fostered by new four-belt design, featuring full-width elastic protector ply.
- Added sidewall and shoulder protection from thicker rubber and new aggressive shoulder design.
- Improved wet traction throughout the tread life cultivated by deep, wide circumferential grooves and minimized bridging between tread elements.



Sizes	Load Range	Tread Depth	MSPN
385/65R22.5	J	22	53779
425/65R22.5	L	23	40321
445/65R22.5	L	23	83691

* Based on industry standard rolling resistance testing of comparable tires or retreads. Actual results may vary, and may be impacted by many factors, to include road conditions, weather and environment, driver performance, etc.

Exceeding the legal speed limit is neither recommended nor endorsed.

Recommended Acceptable

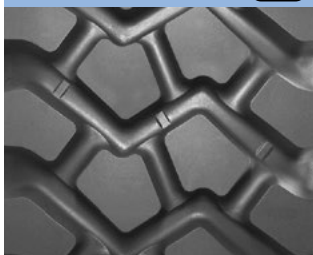
STEER / ALL-POSITION TIRES

XZL™

All-terrain, all-position radial for special service such as Emergency Response Vehicles and Tactical Wheeled vehicles.

- Self-cleaning, open shoulder tread design features offset elements to help enhance traction and floatation capabilities on varied terrains including snow, sand, mud and highway.
- All-terrain, non-directional tread design for added versatility.
- Full-width steel belts and elastic protector ply help provide extra casing protection against most off-road hazards.
- Tubeless construction compatible with Central Tire Inflation systems and bead locks.

OFF ROAD



OFF ROAD

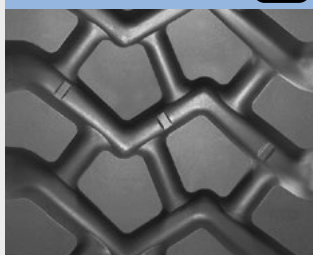
Sizes	Load Range	Tread Depth	MSPN
365/85R20	J	28	56389
395/85R20	J	33	54331
24R21	H	31	76025

XZL+™

All-terrain, all-position radial for special service in extremely demanding applications.

- Traction and floatation on varied terrains such as snow, sand and mud is delivered using an open shoulder tread design, with self-cleaning elements.
- Casing protection against most off-road hazards comes from using full-width steel belts and elastic protector ply.
- Compatible with Central Tire Inflation systems and bead locks due to tubeless construction.

OFF ROAD



OFF ROAD

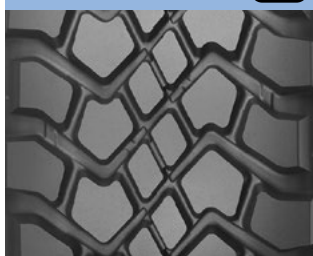
Sizes	Load Range	Tread Depth	MSPN
395/85R20	J	26	94675

XZL™ WIDE BASE

All-position wide base radial designed for optimized traction in on/off road applications.

- Self-cleaning, open-shoulder tread design features offset elements to help enhance traction and floatation capabilities.
- Stable block design helps ensure a consistent footprint, even in free-rolling positions, to help deliver smooth, even wear and a quiet ride.
- Deep, application-specific compounds help provide resistance to aggressions and abrasion common in off-road service.
- Full-width steel belts and elastic protector ply help protect the casing against shocks, bruising and penetrations.

OFF ROAD



OFF ROAD

Sizes	Load Range	Tread Depth	MSPN
445/65R22.5	L	27	84103

* Based on industry standard rolling resistance testing of comparable tires or retreads. Actual results may vary, and may be impacted by many factors, to include road conditions, weather and environment, driver performance, etc.

Exceeding the legal speed limit is neither recommended nor endorsed.

Recommended

Acceptable


DRIVE TIRES

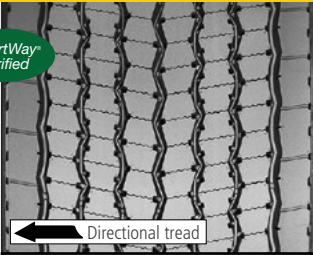
X ONE® LINE ENERGY D

Leading SmartWay® fuel economy* and improved mileage in a next generation wide base single drive tire for line haul applications.

- Dual Energy Compound Tread helps to deliver a top Fuel and Mileage layer, over a cool running Fuel and Durability layer for reduced rolling resistance and extended casing life.
- Infini-Coil® technology wraps 1/4 mile of steel cable around the casing to eliminate casing growth and insure a consistent footprint.
- Outstanding traction and even wear of Matrix Siping's full depth, interlocking sipes with zig-zag walls – providing thousands of biting edges for traction.

SmartWay®
Verified

LINE HAUL




LINE HAUL
REGIONAL
URBAN
ON/OFF ROAD


Sizes	Load Range	Tread Depth	MSPN
445/50R22.5	L	24	24306

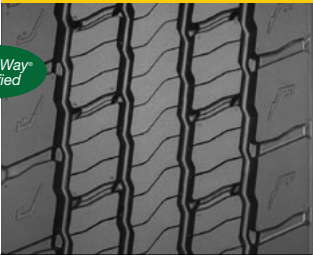
X® LINE ENERGY D+

Our most fuel efficient * dual drive tire for the long haul. With improved lowest rolling resistance, the MICHELIN® X® Line Energy D+ tire delivers fuel savings while providing exceptional traction for driver confidence.

- Interlocking siping and regenerating features provide biting edges throughout tread life.
- Infini-Coil® technology wraps 1/8 mile of steel cable around the casing to eliminate casing growth and insure a consistent footprint.
- Durable casing with high tensile strength steel belts supports repeated retreading.
- 7/7/3 manufacturer's limited casing warranty⁽¹⁾

SmartWay®
Verified

LINE HAUL




LINE HAUL
REGIONAL
URBAN
ON/OFF ROAD

Sizes	Load Range	Tread Depth	MSPN
275/80R22.5	G	30	10873


(1) 7/7/3 Manufacturer's Limited Casing Warranty: 7 Year or 700,000 Mile or 3-Retread Limited Warranty for MICHELIN® X® LINE ENERGY D+ tire when retreaded by an authorized Michelin Retread Technologies (MRT) Dealer only. See limited warranty for details.

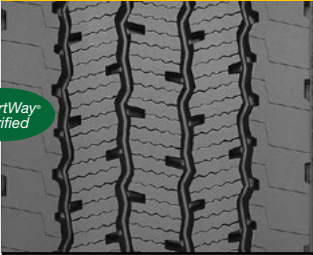
X® LINE ENERGY D

SmartWay® verified fuel efficiency* with leading tread life and traction in an energy drive tire for line haul applications.

- Extended mileage from the wear resistance of the wider footprint, Matrix siping, and Dual Energy Compound tread.
- Driver confidence from the excellent traction and stability provided by Matrix Siping.
- Warrantied retreadability provided by an enhanced inner liner and strengthened bead area for reduced casing fatigue and maximum retreadability.
- 7/7/3 manufacturer's limited casing warranty⁽¹⁾

SmartWay®
Verified

LINE HAUL




LINE HAUL
REGIONAL
URBAN
ON/OFF ROAD

Sizes	Load Range	Tread Depth	MSPN
11R22.5	G	23	35887
275/80R22.5	G	23	36859
275/80R24.5	G	23	36992

(1) 7/7/3 Manufacturer's Limited Casing Warranty: 7 Year or 700,000 Mile or 3-Retread Limited Warranty for MICHELIN® X® LINE ENERGY D tire when retreaded by an authorized Michelin Retread Technologies (MRT) Dealer only. See limited warranty for details.

* Based on industry standard rolling resistance testing of comparable tires or retreads. Actual results may vary, and may be impacted by many factors, to include road conditions, weather and environment, driver performance, etc.

Exceeding the legal speed limit is neither recommended nor endorsed.

 Recommended

 Acceptable

DRIVE TIRES

XDN®2

All weather premium drive tire optimized for exceptional traction and mileage in line haul applications.

- Michelin's Matrix siping technology helps provide exceptional traction on dry and slippery surfaces. Over 1,300 biting edges combine to help provide excellent levels of traction while the 3-dimensional Matrix sipes lock together for the stability normally associated with solid tread blocks.
- Extra-wide tread designed to help provide stability while helping to improve handling and mileage.
- Full 27/32nds tread depth helps provide long original tread life.
- Wide, open shoulder grooves help deliver additional traction balanced with tread life.



LINE HAUL



LINE HAUL REGIONAL URBAN ON/OFF ROAD

Sizes	Load Range	Tread Depth	MSPN
11R22.5	G	27	72805
11R22.5	H	27	64321
12R22.5	H	27	51753
275/80R22.5	G	27	63465
11R24.5	H	27	87129
275/80R24.5	G	27	75684

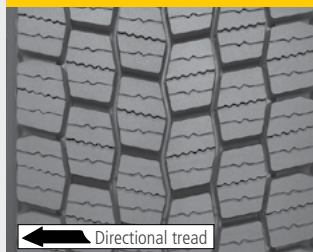
XDN®2 GRIP

All weather, directional, premium drive tire optimized for exceptional traction and mileage in line haul and regional applications.

- Michelin's Matrix siping technology helps provide exceptional traction on dry and slippery surfaces. The Matrix sipes lock together for the stability normally associated with solid tread blocks.
- Extra-wide tread helps provide stability while helping to improve handling and mileage.
- Wide, open shoulder grooves help deliver additional traction balanced with tread life.



LINE HAUL



LINE HAUL REGIONAL URBAN ON/OFF ROAD

Sizes	Load Range	Tread Depth	MSPN
315/80R22.5 ⁽¹⁾	L	28	04355

(1) Not approved for use with 8.25 wheel.



Meets the USTMA (U.S. Tire Manufacturers Association) snow traction performance requirements. Meets the Tire and Rubber Association of Canada (TRAC) requirements for severe snow traction.

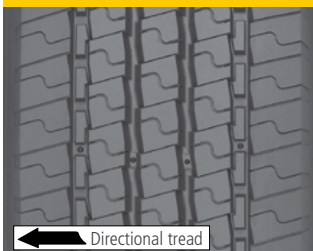
XDE®2+

Open shoulder drive axle radial designed for regional and line haul applications.

- Bridged center block design helps improve tread stability.
- High density of lateral grooves helps provide excellent traction in all weather conditions.
- Directional tread design allows for good traction and long original tread life.



LINE HAUL



LINE HAUL REGIONAL URBAN ON/OFF ROAD

Sizes	Load Range	Tread Depth	MSPN
265/70R19.5	G	20	95319

* Based on industry standard rolling resistance testing of comparable tires or retreads. Actual results may vary, and may be impacted by many factors, to include road conditions, weather and environment, driver performance, etc.

Exceeding the legal speed limit is neither recommended nor endorsed.

 Recommended Acceptable

DRIVE TIRES

X ONE® LINE GRIP D

The X One drive tire for long haul and regional applications with grip that weathers the elements. Over 25% better snow traction than leading competitive tires.⁽¹⁾

- Open Shoulder – Designed for additional grip in adverse weather and snow conditions.
- Maximize Tread Life – Top layer of dual compound tread provides long tread life.
- Excellent Retreadability – Bottom layer of dual compound tread provides cooler running rubber for long casing life.



Meets the USTMA (U.S. Tire Manufacturers Association) snow traction performance requirements. Meets the Tire and Rubber Association of Canada (TRAC) requirements for severe snow traction.

SmartWay®
Verified

LINE HAUL



LINE HAUL	REGIONAL	URBAN	ON/OFF ROAD
-----------	----------	-------	-------------

Sizes	Load Range	Tread Depth	MSPN
445/50R22.5	L	27	55210
455/55R22.5	L	27	41721

(1) In a standardized snow test, the 445/50R22.5 MICHELIN® X ONE® LINE GRIP D tire traveled 54% faster than the 445/50R22.5 Bridgestone® Greater™ M835™ Ecopia™ tire and 28% faster than the 445/50R22.5 Goodyear® G392A SSD™ DuraSeal + Fuel Max™ tire. Actual on-road results may vary.

XDA®5+

Long wearing drive tire featuring regenerating tread features that deliver excellent traction late in life for line haul applications.

- Fuel efficiency provided by the Advanced Technology compound.
- Leading tread life, and smooth wear – solid shoulders.
- Excellent mileage and stability – wide footprint, square shoulders.
- Exceptional handling, traction, and stability – Matrix Siping Technology.
- Late life traction – regenerating tread features.

LINE HAUL



LINE HAUL	REGIONAL	URBAN	ON/OFF ROAD
-----------	----------	-------	-------------

Sizes	Load Range	Tread Depth	MSPN
11R22.5	G	30	14003
275/80R22.5	G	30	61310
11R24.5	H	30	97973
275/80R24.5	G	30	01376

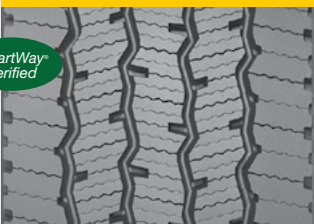
X® MULTI ENERGY D

Ultra fuel-efficient* SmartWay® verified drive tire designed for optimized traction and treadlife in regional and super regional applications.

- Exceptional fuel-efficiency and tread/casing life due to the Dual Energy Compound Tread, which provides low rolling resistance, anti-scrub properties, and minimizes internal casing temperatures.
- Outstanding traction and even wear are conveyed by the inter-locking action of full depth Matrix siping.
- Long tread life and stability are enabled by a wide, optimized footprint, which eliminates the need for additional tread depth.

SmartWay®
Verified

REGIONAL



LINE HAUL	REGIONAL	URBAN	ON/OFF ROAD
-----------	----------	-------	-------------

Sizes	Load Range	Tread Depth	MSPN
11R22.5	G	24	58300
275/80R22.5	G	24	63049
11R24.5	H	24	61739

* Based on industry standard rolling resistance testing of comparable tires or retreads. Actual results may vary, and may be impacted by many factors, to include road conditions, weather and environment, driver performance, etc.

Exceeding the legal speed limit is neither recommended nor endorsed.

Recommended

Acceptable

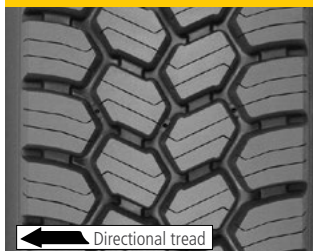
DRIVE TIRES

XDS®

The drive axle radial for year-round traction and optimized for severe winter conditions in regional and on/off road applications.

- Rugged directional tread design helps boost snow and ice traction and helps reduce heel/toe wear typically associated with open shoulder designs.
- Full-width zig-zag sipes interlock to enhance block stability under torque while helping to provide extra bite, especially in deep snow.
- Full-width elastic protector ply and extra-thick rubber under the tread help protect the working plies from shocks, bruises and impacts.

REGIONAL



LINE HAUL REGIONAL URBAN ON/OFF ROAD

Sizes	Load Range	Tread Depth	MSPN
12R22.5	H	26	62208

XDS®2 STANDARD SIZES

The drive axle radial for designed to help boost snow and ice traction and to help reduce heel/toe wear typically associated with open shoulder designs.

- Michelin Durable Technology's Matrix 3-Dimensional siping for enhanced stability and exceptional traction in both dry and slippery conditions.
- Extra robust four-belt crown package with extra wide working plies help deliver exceptional casing life.
- Full-width elastic protector ply and extra thick rubber under the tread help protect the working plies from shocks, bruises and impacts.
- SipeSaver teardrop at the base of the sipes relieves stresses and helps prevent tearing.

REGIONAL



LINE HAUL REGIONAL URBAN ON/OFF ROAD

Sizes	Load Range	Tread Depth	MSPN
11R22.5	H	26	05359
11R24.5	H	26	06613

XDS®2 19.5

Drive axle radial for year round traction, optimized for winter conditions and limited all-position service in regional and on/off road applications.

- Outstanding traction on wet and slippery surfaces from over 700 3D Matrix sipes.
- Optimized for stone rejection with variable angled groove walls and groove bottom protectors.
- Protection from impacts through robust curb guard features and sidewall scallops.
- Self-cleaning tread pattern through zig-zag groove angles and wide, open shoulder grooves.

REGIONAL



LINE HAUL REGIONAL URBAN ON/OFF ROAD

Sizes	Load Range	Tread Depth	MSPN
225/70R19.5	G	18	24975
245/70R19.5	H	19	23134



Meets the USTMA (U.S. Tire Manufacturers Association) snow traction performance requirements. Meets the Tire and Rubber Association of Canada (TRAC) requirements for severe snow traction.

* Based on industry standard rolling resistance testing of comparable tires or retreads. Actual results may vary, and may be impacted by many factors, to include road conditions, weather and environment, driver performance, etc.

Exceeding the legal speed limit is neither recommended nor endorsed.

Recommended Acceptable

DRIVE TIRES

X® MULTI D

The next-generation regional drive tire offering first-class tire mileage and excellent scrub resistance with no compromises to traction.

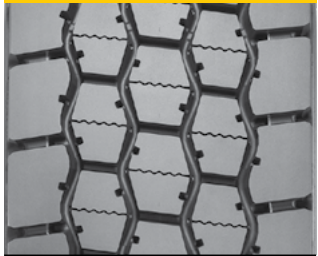
- First-class mileage and scrub resistance due to the use of co-extruded compounds that optimize performance.
- More grip, less slip is provided by the full depth Matrix siping combined with the regenerating tread feature.
- Casing durability is delivered through the use of TW6 OzoneShield™ technology, cooler running rubber from the co-extrusion process, and a full width protector ply.

(1) Confidence Guarantee – See business.michelinman.com > Reference Materials > Warranties/Guarantees for details.

(2) High torque approved.



REGIONAL



LINE HAUL REGIONAL URBAN ON/OFF ROAD

Sizes	Load Range	Tread Depth	MSPN
10R22.5	G	22	74441
11R22.5	G	28	33502
11R22.5	H	28	80276
255/70R22.5	H	24	76760
275/70R22.5	G	27	76710
11R24.5	H	28	27287

X® MULTI D 19.5

An open shoulder drive axle radial tire designed for regional applications.

- More surface contact area designed for tread stability and improved mileage.
- Advanced Technology Compound designed for lower rolling resistance for improved fuel efficiency.*
- Aggressive Tread Design with Semi-Open Shoulder – Provides exceptional traction and driver confidence.
- Robust 4 Belt Package – Provides stable footprint and overall durability.

SmartWay® Verified

REGIONAL



LINE HAUL REGIONAL URBAN ON/OFF ROAD

Sizes	Load Range	Tread Depth	MSPN
285/70R19.5	H	17	09733



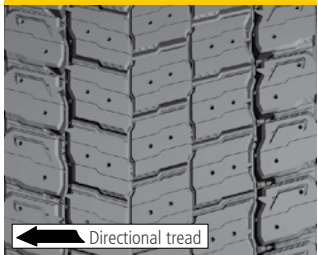
Meets the USTMA (U.S. Tire Manufacturers Association) snow traction performance requirements. Meets the Tire and Rubber Association of Canada (TRAC) requirements for severe snow traction.

X® MULTI D 295

The versatile, all-season drive tire for regional and line haul operations.

- Improved tread life
- Regenerating tread design provides traction throughout life.
- Designed for improved rolling resistance.
- Infini-Coil® Belt Technology strengthens the crown against shocks and impacts.

REGIONAL



LINE HAUL REGIONAL URBAN ON/OFF ROAD

Sizes	Load Range	Tread Depth	MSPN
295/60R22.5	J	21	20735



Meets the USTMA (U.S. Tire Manufacturers Association) snow traction performance requirements. Meets the Tire and Rubber Association of Canada (TRAC) requirements for severe snow traction.

* Based on industry standard rolling resistance testing of comparable tires or retreads. Actual results may vary, and may be impacted by many factors, to include road conditions, weather and environment, driver performance, etc.

Exceeding the legal speed limit is neither recommended nor endorsed.

Recommended Acceptable

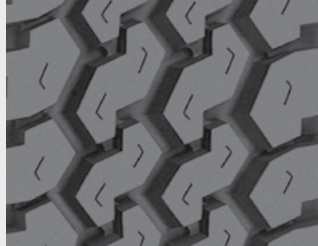
DRIVE TIRES

XPS TRACTION®

All-steel, drive axle light truck tire designed to deliver excellent on/off road traction and retreadability for commercial/fleet operations.

- Aggressive tread designed to deliver good on/off road traction through mud, snow and rough terrain.
- Anti-chip compound in tread area helps resist cuts for enhanced durability.
- Sidewall protector helps provide resistance to sidewall damage from most curb scrubbing.
- Steel casing and reinforced steel bead offer exceptional retreadability.
- Third steel belt helps provide puncture resistance for enhanced durability.

REGIONAL



LINE HAUL	REGIONAL	URBAN	ON/OFF ROAD
-----------	----------	-------	-------------

Sizes	Load Range	Tread Depth	MSPN
LT215/85R16	E	17	35260

X® INCITY GRIP D

All-new urban drive tire designed to handle the challenges of tough inter-city conditions with added durability.

- Exceptional Mileage – Long tread life
- Extended Casing Life – Improved casing protection and casing fatigue resistance
- Exceptional Handling – Excellent traction and stability
- Driver Confidence – Outstanding traction with Matrix Siping



Meets the USTMA (U.S. Tire Manufacturers Association) snow traction performance requirements. Meets the Tire and Rubber Association of Canada (TRAC) requirements for severe snow traction.

- (1) "No bus shall be operated with regrooved, recapped or retreaded tires on the front wheels." US Code of Federal Regulations: Title 49, Transportation; Part 393.75.

URBAN



LINE HAUL	REGIONAL	URBAN	ON/OFF ROAD
-----------	----------	-------	-------------

Sizes	Load Range	Tread Depth	MSPN
305/70R22.5 ⁽¹⁾	L	24	33884

X® INCITY GRIP D SL

All weather premium drive tire optimized for exceptional traction in Urban Transit applications.⁽¹⁾ This is a Single Life tire that offers optimized mileage and durability.

- Optimized Tread Life – Longer tread life with scrub resistant compound which helps to fight irregular treadwear in urban bus conditions.⁽²⁾
- Outstanding traction with Matrix Siping which provides inter-locking action which offers excellent traction and even wear.
- Durable and Dependable – Designed to withstand tough conditions.

- (1) "No bus shall be operated with regrooved, recapped or retreaded tires on the front wheels." US Code of Federal Regulations: Title 49, Transportation; Part 393.75.

- (2) Urban Transit buses fitted with 12R22.5 or 305/85R22.5 dimensions should only use the MICHELIN® X® INCITY Z, X® INCITY Z SL or X® INCITY GRIP D SL tires.

URBAN



LINE HAUL	REGIONAL	URBAN	ON/OFF ROAD
-----------	----------	-------	-------------

Sizes	Load Range	Tread Depth	MSPN
305/85R22.5	J	27	08623

* Based on industry standard rolling resistance testing of comparable tires or retreads. Actual results may vary, and may be impacted by many factors, to include road conditions, weather and environment, driver performance, etc.

Exceeding the legal speed limit is neither recommended nor endorsed.



Recommended



Acceptable

DRIVE TIRES

X® WORKS D

The next generation on/off road drive tire optimized for exceptional traction, toughness and wear performance in mixed and aggressive applications.

- Tear drop sipes in tire opens as they wear, for additional traction.
- Alternating bridging & full tread depth lateral groove tread patterns provides optimum balance between stability from bridging for increased wear & improved rubber to void ratio for maximum traction.
- Chip/cut resistant compound
- Shock, impact and road hazard protection – 4 steel belts in the summit for enhanced durability & puncture resistance.
- Extra sidewall & shoulder protection
- Stone protection for maximum retreadability.

(1) 6-Month Worry-Free Road Hazard Guarantee: Contact your local Michelin representative for details.

(1)



ON/OFF ROAD

LINE HAUL
REGIONAL
URBAN
ON/OFF ROAD

Sizes	Load Range	Tread Depth	MSPN
11R22.5	H	30	10423
11R24.5	H	30	62703

X® WORKS GRIP D

Our most aggressive drive axle tire is made specifically for energy and logging fleets operating in extreme conditions.

- Optimized rubber to void ratio for maximum traction without sacrificing mileage.
- Extra thick sidewalls for severe service protection against aggression, chipping and scaling.
- Optimized housing design allows quick and efficient installation and removal of snow chains.
- Staggered shoulder blocks to help lateral grip for slippery conditions.
- Co-Ex technology for cool running tread rubber reducing temperatures in crown area and preserving the casing.

(1) 6-Month Worry-Free Road Hazard Guarantee: Contact your local Michelin representative for details.



ON/OFF ROAD

LINE HAUL
REGIONAL
URBAN
ON/OFF ROAD

Sizes	Load Range	Tread Depth	MSPN
11R24.5	H	32	51503

X® WORKS XDY®

Next generation on/off road drive tire optimized for exceptional traction and wear in mixed and severe service for on/off road applications.

- Wider tread design designed for increased in removal mileage.
- Designed for improved traction with more efficient mud evacuation from a new directional tread design.
- Maximum mileage and casing life with Co-Ex Technology.
- Excellent retreadability with a robust four steel belt construction.
- Maximum sidewall protection provided by an extra-thick sidewall.

(1) Not approved for use with 8.25 wheel.

ON/OFF ROAD

LINE HAUL
REGIONAL
URBAN
ON/OFF ROAD

Sizes	Load Range	Tread Depth	MSPN
315/80R22.5 ⁽¹⁾	L	28	55576

* Based on industry standard rolling resistance testing of comparable tires or retreads. Actual results may vary, and may be impacted by many factors, to include road conditions, weather and environment, driver performance, etc.

Recommended Acceptable

TRAILER TIRES

X ONE® LINE ENERGY T2

Our most fuel-efficient trailer tire ⁽¹⁾, the MICHELIN® X ONE® LINE ENERGY T2 tire is designed for improved tread wear, fuel and weight savings to help lower your total cost of ownership.

- New Tread Design: New Directional micro sipes and robust solid shoulders help reduce irregular wear.
- Matrix Siping: Located on the three center ribs, sipes with zig-zag walls interlock to provide a stable tread block for squirm resistance.
- Infini-Coil® Technology: A ¼ mile of continuous steel cable wrapped around the casing to help eliminate casing growth and maintain a consistent footprint for long mileage.

SmartWay®
Verified

LINE HAUL



LINE HAUL REGIONAL URBAN ON/OFF ROAD

Sizes	Load Range	Tread Depth	MSPN
445/50R22.5	L	12	75029

(1) Based on internal rolling resistance tests using ISO 28580 test method using comparable line haul trailer tires in tire size 275/80R22.5 LRG for the MICHELIN® X® Line Energy T and 445/50R22.5 LRL for the MICHELIN® X One® Line Energy T2 tire.

X® LINE ENERGY T2

Our most fuel-efficient dual trailer tire ⁽¹⁾ for truckload, long haul transportation. Designed for improved tread wear, fuel savings, excellent retreadability and exceptional traction for driver confidence.

- Micro sipes on all rib edges
- Broad, optimized contact patch
- Dual Energy Compound Tread helps to deliver a top Fuel and Mileage layer, over a cool running Fuel and Durability layer for reduced rolling resistance and extended casing life.
- Curb guards and upper sidewall ribs help fight sidewall damage
- Rectangular bead bundle stabilizes bead region and minimizes fatigue to extend casing life

SmartWay®
Verified

LINE HAUL



LINE HAUL REGIONAL URBAN ON/OFF ROAD

Sizes	Load Range	Tread Depth	MSPN
11R22.5	G	11	49668
295/75R22.5	G	11	24179
11R24.5	H	11	45557
285/75R24.5	G	11	31132

(1) Based on internal rolling resistance tests using ISO 28580 test method using comparable line haul trailer tires in tire size 295/75R22.5 LRG for the MICHELIN® X® Line Energy T2 tire.

* Based on industry standard rolling resistance testing of comparable tires or retreads. Actual results may vary, and may be impacted by many factors, to include road conditions, weather and environment, driver performance, etc.

Exceeding the legal speed limit is neither recommended nor endorsed.

Recommended Acceptable

TRAILER TIRES

X® LINE ENERGY T 19.5

Fuel-efficient, * long wearing, small diameter trailer tire designed for high cube service in line haul applications.

- Designed for longer tread life from a wider tread that distributes force, massive shoulders for scuff resistance, and micro sipes that help prevent abnormal wear.
- Driving confidence, especially in wet conditions, delivered by the efficient water evacuation of see-through circumferential grooves and blind sipes.
- Casing life is extended through the heat reducing impact of the rectangular bead bundle and an extended metallic chafer ply that protects against mounting damage and brake heat.

LINE HAUL



LINE HAUL REGIONAL URBAN ON/OFF ROAD

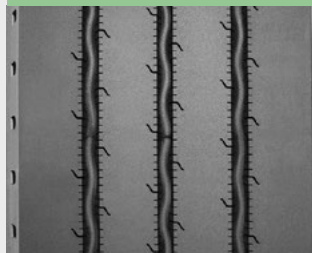
Sizes	Load Range	Tread Depth	MSPN
265/70R19.5	H	13	40936

XTA®2 ENERGY

Fuel-efficient, small diameter trailer tire that helps deliver long, even tread wear in high cube line haul applications.

- Stronger, more durable crown package designed for improved retreadability.
- Advanced technology compounds formulated to help provide low rolling resistance and cool operating temperatures.
- See-through circumferential grooves promote efficient water evacuation for good wet braking and traction throughout the life of the tire.

LINE HAUL



LINE HAUL REGIONAL URBAN ON/OFF ROAD

Sizes	Load Range	Tread Depth	MSPN
245/70R17.5	J	13	78370

* Based on industry standard rolling resistance testing of comparable tires or retreads. Actual results may vary, and may be impacted by many factors, to include road conditions, weather and environment, driver performance, etc.

Exceeding the legal speed limit is neither recommended nor endorsed.

Recommended

Acceptable

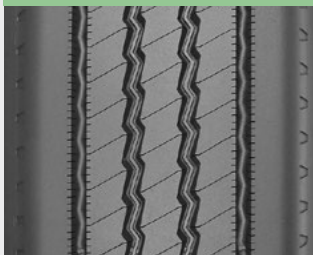
TRAILER TIRES

XTE®

The robust trailer radial designed to withstand the demands of high scrub and spread axle service in regional and line haul applications.

- Long tread life from 16/32nds of application-specific compounds.
- Smooth, even wear in high-scrub service from beefy, solid shoulders and trailer optimized design.
- Protection from impacts and curbing promoted by sidewall scallops and curb guard features.
- Standardized casing dimensions help ensure interchangeability with Michelin long haul steer and drive casings for efficient casing management.

REGIONAL



LINE HAUL REGIONAL URBAN ON/OFF ROAD

Sizes	Load Range	Tread Depth	MSPN
11R22.5	G	16	21307
275/80R22.5	G	16	17706
11R24.5	G	16	07025

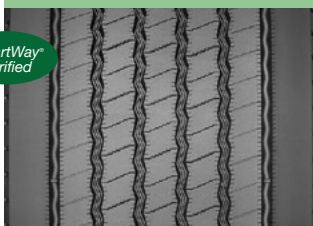
X ONE® MULTI ENERGY T

Breakthrough Advanced Casing Technology designed to delivers a significant reduction in irregular wear and improved fuel economy* for regional operations.

- Irregular wear is reduced by Advanced Casing Technology, microspikes, a solid shoulder and a wide Infini-Coil®.
- Advanced Technology Compounds help reduce rolling resistance – promoting low fuel consumption with no compromise in mileage, durability or casing endurance.
- Outstanding handling comes from an optimized architecture that features wide grooves to promote water evacuation.

SmartWay® Verified

REGIONAL



LINE HAUL REGIONAL URBAN ON/OFF ROAD

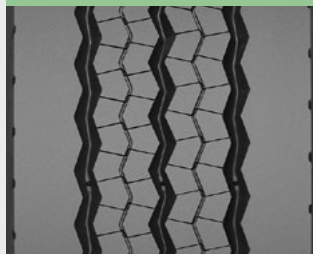
Sizes	Load Range	Tread Depth	MSPN
445/50R22.5	L	16	33836
455/55R22.5	L	16	47798

XTE2®

Robust small diameter trailer tire designed to withstand the demands of high scrub and spread axle service on low platform and specialty trailers in regional and line haul applications.

- Dual compound tread rubber helps ensure cool operating temperatures, while chip and cut resistant rubber compound helps resist the abrasion/aggression from lateral scrub and rough surfaces.
- Improved Wet Traction – Deep, wide channels help provide excellent water evacuation throughout the life of the tire.
- Excellent Traction – Lateral siping along rib edges help enhance traction and braking in adverse weather conditions.
- Casing Durability – Robust crown design with 4-steel belt package.

REGIONAL



LINE HAUL REGIONAL URBAN ON/OFF ROAD

Sizes	Load Range	Tread Depth	MSPN
245/70R19.5	J	16	67113
285/70R19.5	J	18	51278

* Based on industry standard rolling resistance testing of comparable tires or retreads. Actual results may vary, and may be impacted by many factors, to include road conditions, weather and environment, driver performance, etc.

Exceeding the legal speed limit is neither recommended nor endorsed.

Recommended Acceptable

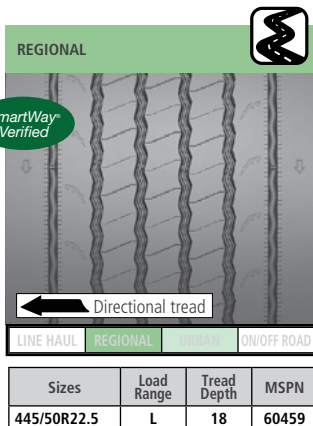
TRAILER TIRES

X ONE® MULTI T

Weight saving, scrub resistant solution designed to deliver superior tread life for regional trailer applications. Advanced co-extrusion technology produces a dual-tread compound:

- Resists scrub where the rubber meets the road.
- Provides a cooler internal layer to maximize casing life.
- Matrix siping and micro sipes help to reduce the onset of irregular wear.
- Carry more payload vs dual tires: 289 pounds or 131 kilograms. ⁽¹⁾
- Improved resistance to stone drilling with the use of variable groove walls partnered with groove bottom protectors.
- Enhanced sidewall protection with the addition of curb guards.
- Improved protection at the bead from an enhanced rubber design in the bead area.

SmartWay
Verified

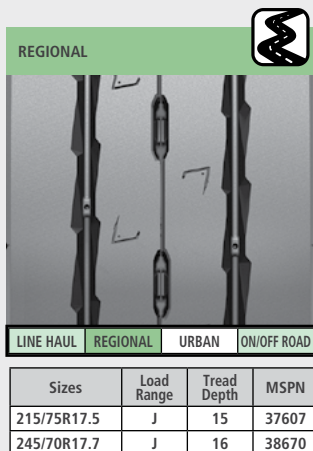


(1) Based on replacing (8) MICHELIN® XTE® tires with Alcoa® Ultra ONE® wheels with (4) MICHELIN® X One® MULTI T Tires with Alcoa® Ultra ONE® wheels.

X® MULTI T2 17.5

The highway trailer radial optimized for low bed, high cube trailer operations in regional applications.

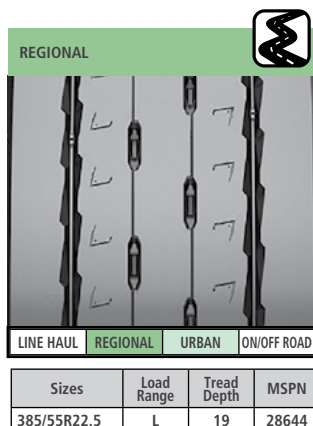
- Resistance to irregular wear from shallow tread depth and very stable tread elements.
- Resistance to stone-retention from significant groove wall angles.
- Outstanding casing durability through robust three belt crown design featuring full width elastic protector ply.
- Infini-Coil® Technology: Incorporates a continuous steel cable wrapped around the tire to ensure a consistent footprint and enhance tire endurance.
- Tread Regeneration: New tread grooves emerge when worn to provide additional grip and enhanced mobility over the life of the tire.



X® MULTI T2

Improved mileage and exceptional durability, this regional and urban trailer tire is primarily used on steerable lift axles on heavy box and flat-bed trailers.

- Innovative evolving groove design which promotes uniform wear and resists stone retention.
- Beefy solid shoulders and increased rubber volume help resist the abrasion of lateral scrub.
- Longer Life and Retreadability – Robust crown design with 4-steel belt package.



* Based on industry standard rolling resistance testing of comparable tires or retreads. Actual results may vary, and may be impacted by many factors, to include road conditions, weather and environment, driver performance, etc.

Exceeding the legal speed limit is neither recommended nor endorsed. Recommended Acceptable

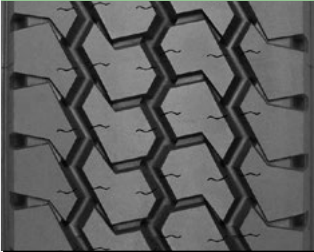
TRAILER TIRES

XTY®2

Low profile radial designed for rugged, mixed trailer service in on/off road applications.

- Chip and cut-resistant compound helps resist the abusive conditions of on/off road applications.
- Four steel belt construction designed to deliver extra protection for the casing and stability.
- Extra-wide protector ply extends under all the major grooves and helps protect the working plies from most bruising and penetrations.

ON/OFF ROAD



LINE HAUL	REGIONAL	URBAN	ON/OFF ROAD
-----------	----------	-------	-------------

Sizes	Load Range	Tread Depth	MSPN
275/70R22.5	J	21	01658

* Based on industry standard rolling resistance testing of comparable tires or retreads. Actual results may vary, and may be impacted by many factors, to include road conditions, weather and environment, driver performance, etc.

Exceeding the legal speed limit is neither recommended nor endorsed. Recommended Acceptable

PRODUCT AVAILABILITY – LINE HAUL

LINE HAUL										
Size	Load Range	Tread Name	Smart-way Verified	Catalog Number	Tread Depth 32nd	Wheel Position			Directional	RV Use
245/70R17.5	J	XTA2 ENERGY		78370	13			■		
265/70R19.5	H	X LINE ENERGY T 19.5		40936	13			■		
11R22.5	G	X LINE ENERGY D	■	35887	23		■			
	G	X LINE ENERGY T2	■	49668	11			■		
	G	X LINE ENERGY Z	■	03363	19	■			■	■
	G	XDA5+		14003	30		■			
	G	XDN2		72805	27		■			
	H	X LINE ENERGY Z	■	06697	19	■			■	■
	H	XDN2		64321	27		■			
12R22.5	H	XDN2		51753	27		■			
235/80R22.5	G	XRV		87511	16	■				■
255/80R22.5	G	XRV		59634	16	■				■
275/70R22.5	J	X MULTI Z 275		31513	18	■				■
275/80R22.5	G	X LINE ENERGY D	■	36859	23		■			
	G	X LINE ENERGY D +	■	10873	30		■			
	G	X LINE ENERGY T	■	92052	12			■		
	G	X LINE ENERGY Z	■	03885	19	■			■	■
	G	XDA ENERGY+	■	08024	23		■			
	G	XDA5+		61310	30		■			
	G	XDN2		63465	27		■			
	H	X LINE ENERGY Z	■	66205	19	■			■	■
295/60R22.5	G	X LINE ENERGY T2	■	24179	11				■	
	J	X LINE ENERGY Z 295		35378	14	■				

AWP - All wheel position/Steer
D - Drive position
T - Trailer position

PRODUCT AVAILABILITY – LINE HAUL

LINE HAUL										
Size	Load Range	Tread Name	Smart-way Verified	Catalog Number	Tread Depth 32nd	Wheel Position			Directional	RV Use
305/70R22.5	L	XRV		93499	16	■				■
315/80R22.5	L	X LINE ENERGY Z Coach		09807	17	■				■
	L	XDN2 GRIP		04355	28		■		■	
365/70R22.5	L	XZA		52215	19	■				■
445/50R22.5	L	X ONE LINE ENERGY D	■	24306	24		■		■	
	L	X ONE LINE ENERGY T2	■	75029	12			■		
	L	X ONE LINE GRIP D	■	55210	27		■			
455/55R22.5	L	X ONE LINE GRIP D	■	41721	27		■			
11R24.5	H	X LINE ENERGY T2	■	45557	11			■		
	H	X LINE ENERGY Z	■	18748	19	■			■	
	H	XDA5+		97973	30		■			
	H	XDN2		87129	27		■			
275/80R24.5	G	X LINE ENERGY D	■	36992	23		■			
	G	X LINE ENERGY T	■	92981	12			■		
	G	XDA5+		01376	30		■			
	G	XDN2		75684	27		■			
	H	X LINE ENERGY Z	■	81281	19	■			■	
285/75R24.5	G	X LINE ENERGY T2	■	31132	11			■		

AWP - All wheel position/Steer
D - Drive position
T - Trailer position

PRODUCT AVAILABILITY — REGIONAL

REGIONAL										
Size	Load Range	Tread Name	Smart-way Verified	Catalog Number	Tread Depth 32nd	Wheel Position			Directional	RV Use
						AWP	D	T		
LT215/85R16	E	XPS RIB		39510	15	■				■
	E	XPS TRACTION		35260	17		■			
LT225/75R16	E	XPS RIB		08404	14	■				■
LT235/85R16	E	XPS RIB		13080	15	■				■
LT245/75R16	E	XPS RIB		26848	15	■				■
10R17.5	G	XZA 17.5		05008	16	■				
215/75R17.5	G	X MULTI Z 17.5		25151	14	■			■	
	J	X MULTI T2 17.5		37607	15			■		
245/70R17.5	J	X MULTI T2 17.5		38670	16			■		
225/70R19.5	G	XDS 2 19.5		24975	18		■			
	G	XZE		91043	17	■				■
245/70R19.5	H	XDS 2 19.5		23134	19		■			
	H	XZE		75997	18	■				■
	J	XTE 2		67113	16			■		
265/70R19.5	G	X MULTI Z 19.5	■	75319	16	■				■
285/70R19.5	H	X MULTI D 19.5	■	09733	17		■		■	
	H	X MULTI Z 19.5	■	31459	16	■			■	■
	J	XTE 2		51278	18			■		
10R22.5	G	X MULTI D		74441	22		■			
	G	XZE		99141	21	■				■
11R22.5	G	X MULTI D		33502	28		■			
	G	X MULTI ENERGY D	■	58300	24		■			
	G	XTE		21307	16			■		
	G	XZE 2		78390	22	■				■
	H	X MULTI D		80276	28		■			
	H	X MULTI ENERGY Z2	■	08630	20	■			■	
	H	XDS 2		05359	26		■		■	
	H	XZE 2		67042	22	■				■

(1) ⚙ Cut & chip resistant tread compound

AWP - All wheel position/Steer
D - Drive position
T - Trailer position

PRODUCT AVAILABILITY — REGIONAL

REGIONAL										
Size	Load Range	Tread Name	Smart-way Verified	Catalog Number	Tread Depth 32nd	Wheel Position			Directional	RV Use
12R22.5	H	XDS		62208	26		■		■	
	H	XZE ☼		85335	22	■				■
255/70R22.5	H	X MULTI D		76760	24		■			
	H	XZE ☼		61737	18	■				■
275/80R22.5	G	X MULTI D		76710	27		■			
	G	X MULTI ENERGY D	■	63049	24		■			
	G	XTE		17706	16			■		
	G	XZE 2		55895	22	■				■
	H	X MULTI ENERGY Z	■	26902	20	■			■	
	H	XZE		01637	22	■				■
295/60R22.5	J	X MULTI D 295		20735	21		■		■	
295/80R22.5	H	X COACH Z		53962	18	■				■
315/80R22.5	L	XZUS 2		77510	23	■				
385/55R22.5	L	X MULTI T2		28644	19			■		
385/65R22.5	L	X MULTIWAY HD XZE		26281	19	■				
425/65R22.5	L	XFE (wb) (Steer)		11829	21	■				
445/50R22.5	L	X ONE MULTI ENERGY T	■	33836	16			■	■	
	L	X ONE MULTI T	■	60459	18			■	■	
455/55R22.5	L	X ONE MULTI ENERGY T	■	47798	16			■	■	
	M	X ONE XZU S		28513	23	■				
11R24.5	G	XTE		07025	16			■		
	G	XZE 2		91867	22	■				
	H	X MULTI D		27287	28		■			
	H	X MULTI ENERGY D	■	61739	24		■			
	H	XDS 2		06613	26		■		■	
	H	XZE 2		88507	22	■				
275/80R24.5	G	XZE 2		75519	22	■				

AWP - All wheel position/Steer
D - Drive position
T - Trailer position

PRODUCT AVAILABILITY – URBAN

URBAN										
Size	Load Range	Tread Name	Smart-way Verified	Catalog Number	Tread Depth 32nd	Wheel Position			Directional	RV Use
						AWP	D	T		
185/60R15C 94T ⁽⁵⁾	C	AGILIS CROSSCLIMATE C-Metric		02998	11.5	■			■	
205/65R15C 102/100T ⁽⁵⁾	C	AGILIS CROSSCLIMATE C-Metric		04143	11.5	■			■	■
195/75R16C 107/105R ⁽⁵⁾	D	AGILIS CROSSCLIMATE C-Metric		56761	11.5	■			■	■
205/75R16C 113/111R	E	AGILIS CROSSCLIMATE C-Metric		83769	11.5	■			■	■
225/75R16C 121/120R ⁽⁵⁾	E	AGILIS CROSSCLIMATE C-Metric		70411	11.5	■			■	■
235/65R16C 121/119R ⁽⁵⁾	E	AGILIS CROSSCLIMATE C-Metric		09118	11.5	■			■	■
LT215/85R16 115/112R	E	AGILIS CROSSCLIMATE LT-Metric		80033	12.5	■				■
LT225/75R16 115/112R	E	AGILIS CROSSCLIMATE LT-Metric		72022	12.5	■				■
LT235/85R16 120/116R	E	AGILIS CROSSCLIMATE LT-Metric		65681	12.5	■				■
LT245/75R16 120/116R	E	AGILIS CROSSCLIMATE LT-Metric		52347	12.5	■				■
LT265/75R16 123/120R	E	AGILIS CROSSCLIMATE LT-Metric		10257	12.5	■				
LT235/80R17 120/117R	E	AGILIS CROSSCLIMATE LT-Metric		09723	12.5	■				
LT245/70R17 119/116R	E	AGILIS CROSSCLIMATE LT-Metric		42604	12.5	■				
LT245/75R17 121/118R	E	AGILIS CROSSCLIMATE LT-Metric		09917	12.5	■				
LT265/70R17 121/118R	E	AGILIS CROSSCLIMATE LT-Metric		36185	12.5	■				
LT285/70R17 121/118R	E	AGILIS CROSSCLIMATE LT-Metric		83162	12.5	■				
LT265/70R18 124/121R	E	AGILIS CROSSCLIMATE LT-Metric		05791	12.5	■				
LT275/65R18 123/120R	E	AGILIS CROSSCLIMATE LT-Metric		57222	12.5	■				
LT275/70R18 125/122R	E	AGILIS CROSSCLIMATE LT-Metric		76555	12.5	■				
LT265/60R20 121/118R	E	AGILIS CROSSCLIMATE LT-Metric		50977	12.5	■				
LT275/65R20 126/123R	E	AGILIS CROSSCLIMATE LT-Metric		15627	12.5	■				
LT285/60R20 125/122R	E	AGILIS CROSSCLIMATE LT-Metric		19604	12.5	■				
11R22.5	H	X INCITY Z		13712	20	■				
275/70R22.5	J	X INCITY Z		59714	21	■				
305/70R22.5	L	X INCITY Z		02348	22	■				
	L	X INCITY GRIP D		33884	24		■			
305/85R22.5	J	X INCITY GRIP D SL		08623	27		■			
	J	X INCITY Z SL		62156	24	■				
315/80R22.5	L	X INCITY ENERGY Z		10182	16	■				

AWP - All wheel position/Steer

D - Drive position

T - Trailer position

PRODUCT AVAILABILITY – ON/OFF AND OFF ROAD







ON / OFF ROAD									
Size	Load Range	Tread Name	Smart-way Verified	Catalog Number	Tread Depth 32nd	Wheel Position			Directional
						AWP	D	T	
11R22.5	H	X WORKS D		10423	30		■		■
	H	X WORKS Z		15701	24	■			
12R22.5	H	X WORKS Z		11073	24	■			
275/70R22.5	J	XTY2		01658	21			■	
315/80R22.5	L	X WORKS XDY		55576	28		■		■
	L	X WORKS Z		64204	23	■			
385/65R22.5	J	XZY3 (wb)		53779	22	■			
425/65R22.5	L	XZY3 (wb)		40321	23	■			
445/65R22.5	L	XZY3 (wb)		83691	23	■			
455/55R22.5	M	X ONE XZY3		11629	23	■			
11R24.5	H	X WORKS GRIP D		51503	32		■		
	H	X WORKS D		62703	30		■		■
	H	X WORKS Z		78261	24	■			

OFF ROAD									
Size	Load Range	Tread Name	Smart-way Verified	Catalog Number	Tread Depth 32nd	Wheel Position			Directional
						AWP	D	T	
365/85R20	J	XZL		56389	28	■			
395/85R20	J	XZL		54331	33	■			
	J	XZL+		94675	26	■			
24R21	H	XZL		76025	31	■			
445/65R22.5	L	XZL (wb)		84103	27	■			

AWP - All wheel position/Steer
D - Drive position
T - Trailer position

PRODUCT NAMING AND SEGMENTATION

The specific tread design used should only be considered after the vehicle type and user vocation has been examined. There are several categories of tire service applications:

SEGMENT	APPLICATION ⁽¹⁾ NAME AND PICTOGRAM	APPLICATIONS	VOCATIONS
Line Haul	A 	Heavy loads and high speeds for extended periods of time. Primarily interstate or divided highway.	<ul style="list-style-type: none"> • Truckload Carrier • Refrigerated
Regional	E 	Regional is medium to heavy loads, frequently on 2-lane roads. Vehicles generally return to home base at night. Emerging Super Regional application combines driving conditions seen in Line Haul and Regional applications.	<ul style="list-style-type: none"> • LTL Dry Van • Parcel • Food & Beverage • Pick-up & Delivery
On/Off Road	Y 	Heavy loads and slower speeds, operating on a mixture of improved secondary and aggressive road surface.	<ul style="list-style-type: none"> • Construction and Mining • Forestry and Logging • Oil Field
Off Road	L 	Very heavy loads normally on poor or unimproved surfaces. ⁽²⁾	<ul style="list-style-type: none"> • Forestry and Logging • Oil Field
Urban	U 	Stop-and-go delivery ... service within a limited radius – metro and suburban.	<ul style="list-style-type: none"> • Urban Buses • Sanitation and Refuse • Pick-up & Delivery
Coach and Recreational	 	Coaches and recreational vehicles	<ul style="list-style-type: none"> • Highway & Regional Coach • RV

D = Drive Positions, T = Trailer Positions, Z = All-Wheel Positions

(1) A, E, Y, L, U = Traditional Application Designations

X® LINE, X® MULTI, X® WORKS, X® FORCE, X® INCITY, X® COACH = New Application Designations

Michelin will progressively replace the traditional application designations with the new ones.

(2) Off Road Tires can also be used On Road if DOT is present.

Federal Motor Carrier Safety Regulations, 9 C.F.R. § 395.75 (d), specify that “no bus shall be operated with regrooved, recapped or retreaded tires on the front wheels.”

To learn more please contact your Michelin Sales Representative or visit :

US : business.michelinman.com

CA : michelintruck.com/en_CA

To order more brochures, please call Promotional Fulfillment Center
1-800-859-0665 Monday through Friday, 8 a.m. to 6 p.m. Eastern Time

United States

Michelin North America, Inc.

One Parkway South, Greenville, SC 29615 – 1-888-622-2306

Canada

Michelin North America (Canada), Inc.

2500 Daniel Johnson, Suite 500, Laval, Quebec H7T 2P6 – 1-888-622-2306

©2021 Michelin North America, Inc. All rights reserved. An Equal Opportunity Employer

©2021 MNA(C)I. All rights reserved.

Michelin North America, Inc. reserves the right to change product specifications at any time without notice or obligations.

MWL41222 (06/21)