



LINE HAUL & REGIONAL APPLICATIONS

# THE MICHELIN® X ONE® LINE GRIP D PRE-MOLD RETREAD



The long wearing, outstanding traction MICHELIN® X One drive retread for line haul and regional applications.

Line Haul	Regional	Urban	On/Off Road
<input checked="" type="checkbox"/> Recommended	<input checked="" type="checkbox"/> Recommended	<input type="checkbox"/> Acceptable	<input type="checkbox"/> Acceptable

## BENEFITS:

### Long Tread Life –

Maximum mileage

- **Dual Compound Tread**

Exclusive, unique two-layer compound designed to minimize casing temperatures for longer tread and casing life.

- **Open Shoulder**
- **Matrix Siping**

### Driver Confidence –

Outstanding grip with Matrix siping

- **Matrix sipes** provide inter-locking action which offers excellent traction and even wear
- **Zig-Zag groove walls** offer optimized biting edges and excellent water and snow evacuation.
- **Full depth sipes** deliver excellent traction throughout the life of the tread.

### Fuel Economy <sup>(1)</sup> –

Save fuel

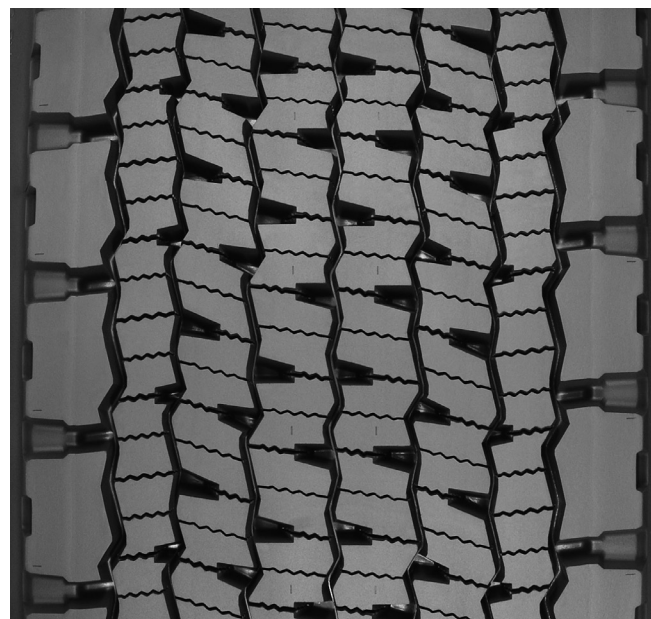
- **Dual Compound Tread**

### Durability –

Improved shoulder adhesion

- **Winged Tread**

Provides maximum shoulder adhesion in high scrub applications



Tread Size	Metric	375/425 <sup>(2,3)</sup>	385/435 <sup>(2,4)</sup>
Tread Depth	Metric	21 mm	
	Inches	27/32"	

- (1) Based on industry standard rolling resistance testing of comparable tires or retreads. Actual results may vary, and may be impacted by many factors, to include road conditions, weather and environment, driver performance, etc.
- (2) Tread widths with two measurements have wings. The first number is tread base width in mm. The second number is the overall width, wing tip to tip.
- (3) The 375/425 tread fits on a 445 Michelin® X One® casing.
- (4) The 385/435 tread fits on a 455 Michelin® X One® casing.

TO FIND OUT MORE  
US: [business.michelinman.com](http://business.michelinman.com)  
CA: [michelintruck.com/en\\_CA](http://michelintruck.com/en_CA)

FIND US ON FACEBOOK  
[michelintruck](https://www.facebook.com/michelintruck)

VISIT US ON THE WEB  
US: [business.michelinman.com/contact-us](http://business.michelinman.com/contact-us)  
CA: [michelintruck.com/en\\_CA/contact-us](http://michelintruck.com/en_CA/contact-us)

CONTACT US BY TELEPHONE  
US: 1-888-622-2306  
CA: 1-888-622-2306

Michelin North America Inc., One Parkway South, Greenville, SC 29615  
Michelin North America (Canada) Inc., 2500 Daniel Johnson Blvd., Suite 500, Laval (QC) H7T 2P6  
Copyright © 2021 MNA(C)I. All rights reserved.  
Copyright © 2021 Michelin North America, Inc. All rights reserved. An Equal Opportunity Employer PDF Only (07/21)

[business.michelinman.com](http://business.michelinman.com)

