

# **MICHELIN<sup>®</sup>** **XDR<sup>®</sup> 3+ TIRE RANGE**



## **LONGER-LASTING INNOVATIONS**



RIGID DUMP TRUCKS

40.00R57

50/90R57

53/80R63

59/80R63



**MICHELIN**

## GET MORE TIRE LIFE

AT LEAST

**4%<sup>1</sup> MORE**

WITH THE MB4 COMPOUND

AT LEAST

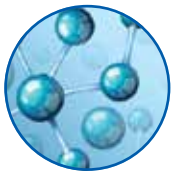
**6%<sup>1</sup> MORE**

WITH THE MB COMPOUND



### **NEW MICHELIN® MULTILAYER TECHNOLOGY**

Designed for optimized wear  
on front and rear axles



### **2<sup>ND</sup> GENERATION OF REVOLUTIONARY COMPOUNDS**

Designed with a more homogeneous  
mix leads to a slower wear rate



<sup>1</sup> Compared to the MICHELIN® XDR® 3 tire. Average performance by mine site. Projected improvement in tire life based on the result of 13 field performance placement customer mine sites. Actual results may vary.

# MICHELIN® XDR® 3+ TIRE RANGE

| COMMERCIAL DESCRIPTION                | CAI<br>MSPN     | Max. dist./hour<br>km mile | TKPH<br>TMPH | Tread depth<br>mm 32 <sup>nd</sup> |
|---------------------------------------|-----------------|----------------------------|--------------|------------------------------------|
| XDR3+ MB E4R **<br>40.00R57 Tubeless  | 932077<br>10900 | 24<br>14.9                 | 1152<br>789  | 98<br>123.5                        |
| XDR3+ MB4 E4R **<br>40.00R57 Tubeless | 151477<br>38891 | 20<br>12.4                 | 960<br>658   | 98<br>123.5                        |
| XDR3+ MB E4R **<br>50/90R57 Tubeless  | 078316<br>78907 | 24<br>14.9                 | 1498<br>1026 | 98<br>123.5                        |
| XDR3+ MB4 E4R **<br>50/90R57 Tubeless | 704562<br>84040 | 20<br>12.4                 | 1248<br>855  | 98<br>123.5                        |
| XDR3+ MB4 E4R **<br>53/80R63 Tubeless | 221719<br>00582 | 20<br>12.4                 | 1320<br>904  | 110<br>138.6                       |
| XDR3+ MB E4R **<br>59/80R63 Tubeless  | 535123<br>03414 | 24<br>14.9                 | 1920<br>1315 | 110<br>138.6                       |
| XDR3+ MB E4R **<br>59/80R63 Tubeless  | 535123<br>03414 | 24<br>14.9                 | 1843<br>1262 | 110<br>138.6                       |
| XDR3+ MB4 E4R **<br>59/80R63 Tubeless | 417433<br>16577 | 20<br>12.4                 | 1600<br>1096 | 110<br>138.6                       |
| XDR3+ MB E4R **<br>59/80R63 Tubeless  | 417433<br>16577 | 20<br>12.4                 | 1536<br>1052 | 110<br>138.6                       |

