

MICHELIN / AGILIS³ RC **NEW**



SAFER FOR LONGER

RIM SIZE	DIMENSIONS	LOAD INDEX / SPEED INDEX**
14"	185/80 R 14C	102/100R TL
	195/80 R 14C is equivalent to 195 R14C	106/104R TL
15"	195/80 R 15C is equivalent to 195 R15C	108/106S TL
	NEW 195/75 R 15LT	109/107S TL
	195/70 R 15C	104/102S TL
	205/70 R 15C	106/104S TL
	215/70R15C	109/107S TL
16"	NEW 195/75 R 16C	107/105T TL
	215/70 R 16C	108/106T TL
	NEW 215/65 R 16C	109/107T TL
	NEW 235/65 R 16C	115/113T TL
17"	NEW 235/60 R 17C	117/115T TL

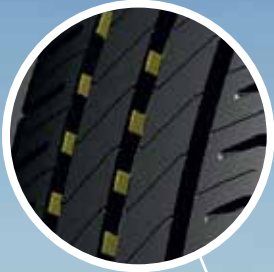


(**) Tyre for utility vehicles are governed by regulation R54 of the UNECE (in particular, this rule stipulates that the load capacity and speed indexes must be indicated on the tyre). However, in certain cases, there may be an additional marking with a higher speed capacity, combined with a reduction of load capacity.

DELIVERING NEW DESIGN AND TECHNOLOGY FOR EVERLASTING PERFORMANCES

STONE EJECTOR

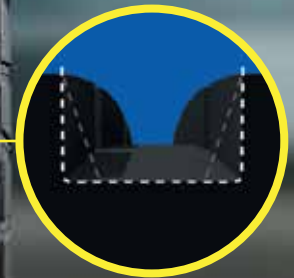
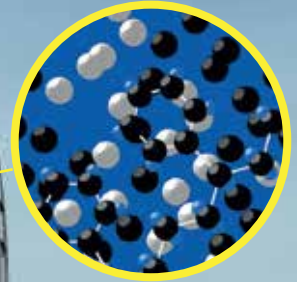
Prevents stone retention, resulting in improved service life



EVERGRIP TECHNOLOGIES

INNOVATIVE POLYMER

Improved wet grip, fuel saving and mileage



U SHAPE GROOVES

Higher water clearance for lasting wet grip performance



FULL DEPTH SIPES

Market leading wet grip performance; both new and when worn

FIND OUT MORE AND VISIT US ONLINE



WEBSITE
<https://middle-east.michelin.com/en/>
<https://africa.michelin.com/en/>
<https://africa.michelin.com/fr/>



MICHELIN