



2021

PRODUCT BROCHURE

# ***MATERIAL HANDLING*** *COMPLETE PORTFOLIO*



## BEYOND ROAD

# DIGITAL ENVIRONMENT

We are dedicated to being your best partner, and this also reflects in the online tools we make available. Whether it's through our websites, our social media accounts or digital tools, stay connected to receive the latest updates!

## WEBSITES

Developed for those who work on a surface that isn't a road, our websites provide information and tools wherever and whenever users need them, no matter what device they're using: a phone, a tablet or a computer.

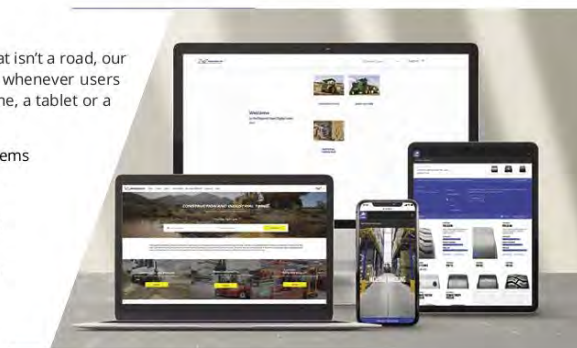
Product selectors for OTR tires, tracks and track systems for the Construction, Material Handling, Agriculture, and Powersports industries

Dedicated content such as testimonials, videos, best practices and industry news

Service and support information including warranty documents, data books and fitment guides

Contact finder

[business.michelin.co.uk](http://business.michelin.co.uk) | [camso.co](http://camso.co)



## BEYOND ROAD CONNECT

Beyond Road Connect is a tool that helps explaining the features and benefits of our Material Handling, Construction and Agriculture products.

Accessible offline with the [iOS app](#)

Complete product information, including features, benefits, product sheets, and customer feedback (voice of customer), etc

360 views of products and action videos

Product support information

Credentials are needed to access the platform, please make sure to create your account by completing [this form](http://connectbeyondroad.michelingroup.com/user?view=registration): [connectbeyondroad.michelingroup.com/user?view=registration](http://connectbeyondroad.michelingroup.com/user?view=registration)

[connectbeyondroad.michelingroup.com](http://connectbeyondroad.michelingroup.com)

## INTENSITY CALCULATOR

Our Intensity Calculator for solid tires helps you select the right product for your application. It will help you measure the work that the tires will perform and help you select the best solution.

[intensitycalculator.camso.co](http://intensitycalculator.camso.co)





MICHELIN RESERVES THE RIGHT TO CHANGE OR DISCONTINUE ANY SPECIFICATIONS, DESIGNS, FEATURES, MODELS, OR ACCESSORIES SHOWN OR INDICATED WITHOUT NOTICE.

## CONNECT WITH US ON SOCIAL MEDIA!

### **MICHELIN**

**FACEBOOK**  
@MichelinCanada

**TWITTER**  
@MichelinBiz

**LINKEDIN**  
@michelin-for-professional-businesses/

**YOUTUBE**  
@michelinearthmover

**INSTAGRAM**  
@michelinbusiness/

### **CAMSO**

**FACEBOOK**  
@camso.co

**TWITTER**  
@camso\_co

**LINKEDIN**  
@camso\_co

**YOUTUBE**  
@camoplastsolidéal

**INSTAGRAM**  
@camso\_co



# TABLE OF CONTENTS

DIGITAL TOOLS	2	QUICK HEEL TECHNOLOGY	45
ABOUT THE BROCHURE	5	PRESS-ON TIRES (PON)	46
THREE BUSINESS SEGMENTS	7	SOLIDEAL PON 775	47
COMPLETE LINE OVERVIEW	10	SOLIDEAL PON 775 NMAS	48
INDUSTRIAL PNEUMATIC TIRES (RADIAL)	13	SOLIDEAL PON 555	49
MICHELIN XZM2+	14	SOLIDEAL PON 555 NM	50
MICHELIN XZM2+ <sup>A</sup>	15	SOLIDEAL PON 550	51
MICHELIN X STACKER 2	16	SOLIDEAL PON 550 NM	52
MICHELIN X STACKER 2 LC	17	SOLIDEAL SM HL	53
MICHELIN X STRADDLE 2	18	SOLIDEAL SM SRP/SRP+	54
MICHELIN X TERMINAL-T	19	SOLIDEAL WHEELS & ACCESSORIES	55
MICHELIN XZM	20	SOLIDEAL ON-SITE SERVICE	58
MICHELIN XZR	21	MAINTENANCE TIPS FROM OUR EXPERTS	60
INDUSTRIAL PNEUMATIC TIRES (BIAS)	22	WARRANTY	63
SOLIDEAL AIR 550	23		
SOLIDEAL ED PLUS NM	24		
SOLIDEAL AIR 570	25		
SOLIDEAL HAULER LT	26		
SOLIDEAL HAULER SM	27		
SOLIDEAL HAULER HA-TR	28		
SOLIDEAL PORTMASTER	29		
SOLIDEAL AIR 561	30		
RESILIENT TIRES (RES)	31		
SOLIDEAL RES 660 XTREME SERIES	32		
SOLIDEAL RES XTREME NMAS	33		
SOLIDEAL RES XTREME NM	34		
SOLIDEAL RES 550 MAGNUM SERIES	35		
SOLIDEAL MAGNUM NM	36		
SOLIDEAL RES 330	37		
SOLIDEAL RIB	38		
SOLIDEAL SOLIDAIR LT	39		
SOLIDEAL SOLIDAIR ZZRIB	40		
SOLIDEAL HT	41		
SOLIDEAL HT BOMBER	42		
SOLIDEAL SM	43		
SOLIDEAL SM SL+	44		



## ABOUT THE ***BROCHURE***

This Beyond Road Material Handling brochure offers a complete overview of our products and services for every business segment, as well as some maintenance tips, details on warranty and links to our online tools. The brochure showcases the complete Michelin and Solideal material handling product portfolio, and it is available for limited distribution among our dedicated representatives to support sales efforts. The brochure has been designed to be used online or to be printed – whether as a whole or only the desired pages.

WE ARE EXPLORERS, ADVENTURERS AND INNOVATORS, WE ARE MICHELIN BEYOND ROAD

## **WHY MICHELIN BEYOND ROAD**

As off-the-road mobility specialists, we acknowledge the strong specificity of our customers and offer them relevant off-the-road mobility solutions. Beyond Road means that we'll always look for better ways to partner with our customers to solve their challenges with innovative, relevant and unique products and services.

**Our Beyond Road Material Handling team is committed to:**

- Go further by providing our customers with trusted off-the-road solutions that make their journey easier, more productive, sustainable and enjoyable.
- Listen, understand and learn about each of our customers' realities.
- Anticipate, collaborate and adapt to create a safer and more efficient work environment.
- Empower ourselves to make responsible decisions in the interests of our partners.
- Pioneer innovative ideas to achieve our sustainability goals.



## EFFICIENT AND SAFE MATERIAL HANDLING OPERATIONS

At Michelin Beyond Road, we accelerate your activities for more efficiency. As off-the-road mobility specialists, we developed our expertise in the field, with our clients and partners, understanding and foreseeing the challenges of today's evolving warehousing and logistics, ports operations, and airport ground support handling activities.

Our products are engineered and manufactured with rigorous quality standards to guarantee the safety and reliability of your operations. Be it radial, bias, solid resilient, press-on tires, or wheels, we have the technology and the range to match your needs. You name it,

**WE HANDLE IT.**



### PRODUCTIVITY

Designed to OEM specifications, our tires and wheels ensure smooth, safe operations at the lowest operating cost, providing maximum uptime for your fleets. We can also offer a worldwide service coverage available 24/7, helping you get the job done, on time.



### SUSTAINABILITY

With the aim of being a driving force in sustainable mobility, our vision is that by 2050, our tires will be entirely produced with sustainable materials and that every effort will be made, across every industry stakeholder, to ensure that 100% of end of life tires are recycled or reused.



### SAFETY

Listening to our clients in the field and investing in research and development helps us ensure our mobility solutions meet and respect safety requirements worldwide. That's how we were able to develop innovative solutions like our non-marking anti-static tires to address the issue of electricity build-up and our TireCare TPMS monitoring solution to avoid unplanned downtime. Furthermore, we work closely with clients to help them understand the impact and risks of tire wear, as well as the importance of selecting the right tire for their specific application.



# WE HAVE THREE DEDICATED **BUSINESS SEGMENTS**

Supported by our extensive service offering  
through our global network of partners



[Click here  
to see video](#)



[Click here to see  
the line-up  
by vehicle type](#)

## **WAREHOUSING, LOGISTICS AND INDUSTRY**

To reach the highest productivity levels required for warehousing, logistics and industry operations, we provide the optimal material handling and logistics solutions, no matter the environment or the intensity of your application. Chosen by many of the world's leading OEMs, our tires, wheels and assemblies ensure smooth, safe operations at the lowest operating cost, providing maximum uptime for your fleets.



**SMALL CAPACITY  
FORKLIFT**



**MULTI-DIRECTIONAL  
FORKLIFTS**



**MEDIUM CAPACITY  
FORKLIFT**



**SIDELoader  
FORKLIFTS**



**ARTICULATED  
FORKLIFTS**



[Click here  
to see video](#)



[Click here to see  
the line-up  
by vehicle type](#)

## ***PORT OPERATIONS***

To help you meet today's safety and vessel turnaround time challenges, our experts have developed tires and services specifically adapted to allow you to manage the toughest load and speed requirements, such as straddle carriers with twin lift operations. By creating strong and close relationships with our clients, we also have the ambition of being a key partner in the race for automation and sustainable operations.



**AUTOMATIC GUIDED  
VEHICLES**



**HEAVY CAPACITY  
FORKLIFTS**



**REACH STACKERS**



**TERMINAL TRACTORS**



**TERMINAL TRAILERS**



**EMPTY CONTAINER  
HANDLERS**



**LADEN CONTAINER  
HANDLERS**



**STRADDLE  
CARRIERS**





[Click here  
to see video](#)



[Click here to see  
the line-up  
by vehicle type](#)

# AIRPORT GROUND SUPPORT HANDLING

Facing the challenges of your daily activities via a single point of contact, our team provides a tailor-made approach that covers entirely the specific needs of airport ground support handling. From fueling, to aircraft towing or baggage handling, our solutions support operations to ensure a smooth and safe coordination of all ground support activities allowing the aircraft to take off within the strict time constraints.



**TOW  
TRACTORS**



**CONTAINER/  
PALLET  
TRANSPORTERS**



**PASSENGER  
BOARDING  
BRIDGES**



**BAGGAGE/CARGO  
TRAILERS AND  
DOLLIES**



**BELT  
LOADERS**



**AIRCRAFT  
TRACTORS**

## COMPLEMENTARY RANGE

Michelin also provides an extensive range of complementary products within the array of airport ground support activities, covering all of your operations' needs.



**TRUCKS & BUSES**



**FIRE TRUCKS**



**SNOWPLOWS**



**LIGHT TRUCKS**

# COMPLETE LINE OVERVIEW

## INDUSTRIAL PNEUMATIC TIRES | RADIAL



MICHELIN  
XZM2+



MICHELIN  
XZM2+A



MICHELIN  
X STACKER 2



MICHELIN  
X STACKER 2 LC



MICHELIN  
X STRADDLE 2



MICHELIN  
X TERMINAL-T



MICHELIN  
XZM



MICHELIN  
XZR

## INDUSTRIAL PNEUMATIC TIRES | BIAS



SOLIDEAL  
AIR 550



SOLIDEAL  
ED + NM



SOLIDEAL  
AIR 570



SOLIDEAL  
HAULER LT



SOLIDEAL  
HAULER SM



SOLIDEAL  
HAULER HA-TR



SOLIDEAL  
PORTMASTER HD



SOLIDEAL  
AIR 561

## SOLID TIRES | RESILIENT



SOLIDEAL RES 660  
XTREME SERIES



SOLIDEAL RES  
XTREME NMAS



SOLIDEAL  
RES XTREME NM



SOLIDEAL RES 550  
MAGNUM SERIES



SOLIDEAL  
MAGNUM NM



SOLIDEAL  
RES 330



SOLIDEAL  
RIB



SOLIDEAL  
SOLIDAIR LT



SOLIDEAL  
SOLIDAIR ZZRIB



SOLIDEAL  
HT



SOLIDEAL  
HT BOMBER



SOLIDEAL  
SM



SOLIDEAL  
SM SL+

## SOLID TIRES | PRESS-ON



SOLIDEAL  
PON 775



SOLIDEAL  
PON 775 NMAS



SOLIDEAL  
PON 555



SOLIDEAL  
PON 555 NM



SOLIDEAL  
PON 550



SOLIDEAL  
PON 550 NM



SOLIDEAL  
SM HL



SOLIDEAL  
SM SRP/SRP+





## TIRE **TECHNOLOGIES**

When it comes to tires, it's all about delivering the right product for the unique mobility challenges of the material handling industry. Be it pneumatic or solid tires, we have the range to meet the realities of today's evolving material handling applications. Machine requirements have changed – they now on average travel at higher speeds and cover longer distances than ever before. With this, the intensity of their duty cycles is becoming more demanding.

As off-the-road mobility specialists, we understand these nuances. We believe to ensure the lowest operating cost solution you need to have the right tire for your application. So, we engineered a complete portfolio of tires for all types of material handling activities on any surface, be it in a port, warehouse, airport – you name it, **we handle it.**

## INDUSTRIAL PNEUMATIC ***RADIAL TIRES***

Radial tires combine metal or fabric plies, extending from one bead to the other. The radial construction decouples the side walls from the tread. Therefore the tire has a large, low wearing and stable footprint, offering the best traction on all types of surfaces. Also, it has an increased resistance to heating and allows a higher mileage. All of this results in a low cost per hour for the most demanding applications.



# MICHELIN XZM2+

YOUR PRODUCTIVITY  
DESERVES MICHELIN



## Reduced downtime

- Its massive tread, wear resistance and low abrasion rubber provide exceptional service life



## Increased strength

- Highly resistant to impact and puncture thanks to its reinforced-crown architecture

THE MOST VERSATILE OPTION FOR REACH STACKERS.  
ITS INCREASED ROBUSTNESS ENABLES YOU TO MAXIMISE YOUR PRODUCTIVITY AND SERVICE LIFE.

## PERFORMANCE INDICATORS

May differ depending on the vehicle your tires are mounted on.

To see the tires' performance ratings, [click here](#).



## AVAILABLE SIZES

18.00 R 33 TUBELESS



# MICHELIN XZM2+<sup>A</sup>

YOUR PRODUCTIVITY  
DESERVES MICHELIN



## Productivity

- Extra long life for less stops and less servicing



## Robustness

- Improved robustness<sup>(1)</sup> thanks to increased thickness of the sidewall

THE MOST VERSATILE OPTION FOR REACH STACKERS.  
ITS INCREASED ROBUSTNESS ENABLES YOU TO MAXIMISE YOUR PRODUCTIVITY AND SERVICE LIFE.

## PERFORMANCE INDICATORS

May differ depending on the vehicle your tires are mounted on.

To see the tires' performance ratings, [click here](#).



## AVAILABLE SIZES

18.00 R 25 TUBELESS

As per the 2020 Michelin Databook.

<sup>(1)</sup> Compared with the 18.00 R 25 MICHELIN® XZM<sup>19</sup>2+ tire.

# MICHELIN X STACKER 2

MAXIMIZE THE UPTIME  
OF YOUR REACH STACKER



## More robust<sup>(1)</sup>

- New and improved crown structure providing a higher endurance
- Superior overall robustness of the tire

## Last longer<sup>(2)</sup>

- 7% longer wear life
- A dual compound to run longer distance per hour and for longer wear life



## Excellent bead endurance

- With the introduction of B2 Technology

## Run more distance in an hour

- Adapted tread depth to run + 40% distance per hour<sup>(1)</sup>

A SMOOTH IND5 RADIAL TIRE THAT PROVIDES EXTRA LONG LIFE FOR STACKING OPERATIONS.  
EXCEPTIONAL ROBUSTNESS AND RESISTANCE TO AGRESSIONS.

## PERFORMANCE INDICATORS

May differ depending on the vehicle your tires are mounted on.

To see the tires' performance ratings, [click here](#).



## AVAILABLE SIZE

18.00 R 25 TUBELESS

As per the 2020 Michelin Databook

(1) Compared to MICHELIN® X STACKER® 18.00 R 25 tire.

(2) Compared to MICHELIN® X STACKER® 18.00 R 25 tire, average performance by port site. Projected improvement in wear life based on field performance in customer port sites.

# MICHELIN X STACKER 2 LC

STACKS UP IN PERFORMANCE



## Improved heat build-up resistance

- Less rubber for a cooler tire

## More robust<sup>(1)</sup>

- Designed to address very severe usages (speed, load combination)



## Increased load capacity

- More internal air volume for an improved resistance to load

SMOOTH IND4 RADIAL TIRE SPECIFICALLY DESIGNED FOR REACH STACKERS OPERATING IN THE MOST SEVERE USAGE CONDITIONS.

REQUEST TECHNICAL ADVICE TO A MICHELIN REPRESENTATIVE.

## PERFORMANCE INDICATORS

May differ depending on the vehicle your tires are mounted on.

To see the tires' performance ratings, [click here](#).



## AVAILABLE SIZE

18.00 R 25 TUBELESS

As per the 2020 Michelin Databook

<sup>(1)</sup> Compared to 18.00 R 25 MICHELIN® X STACKER® 2 tire. Less rubber for a cooler tire and more internal air volume for an improved resistance to load.



# MICHELIN X STRADDLE 2

MOVING CONTAINERS  
FURTHER AND FASTER



## Run longer distances<sup>(3)</sup>

- Drive up to 15 km in 1 hour and 35 km/h max speed due to a cooler running tire<sup>(4)</sup>

## Higher load capacity at high speeds

- Carry up to 17.85 tons<sup>(1)</sup> up to 22 km/h (13 mph) due to +20% tire inner air volume<sup>(2)</sup>



## Improved bead design

- Can be fitted on both 11.25 and 13.00 rims<sup>(6)</sup> due to a new bead area design

## RUN FURTHER

Up to +15% tire life<sup>(5)</sup> due to a new tread design with 8% more rubber and an improved crown and bead durability<sup>(6)</sup>.

THE SAFEST AND MOST PRODUCTIVE OPTION FOR YOUR STRADDLE CARRIERS.  
THE 480/95 R 25 SIZE HAS BEEN SPECIALLY DESIGNED FOR TWIN LIFT OPERATIONS.

## PERFORMANCE INDICATORS

May differ depending on the vehicle your tires are mounted on.

To see the tires' performance ratings, [click here](#).



## AVAILABLE SIZES

450/95 R 25 TUBELESS

480/95 R 25 TUBELESS

As per the 2020 Michelin Database:

<sup>(1)</sup> At the nominal pressure of 10 bars and carry 17 Tons from 22 km/h to 25 km/h.

<sup>(2)</sup> Compared to MICHELIN® X STRADDLE® 16.00 R 25 and MICHELIN® X STRADDLE® 2.450/95 R 25 tires.

<sup>(3)</sup> Compared to MICHELIN® X STRADDLE® 480/95 R 25: max distance of 12 kilometers in one hour and 30 mi/h max speed.

<sup>(4)</sup> Compared to MICHELIN® X STRADDLE® 480/95 R 25 tire.

<sup>(5)</sup> Compared to MICHELIN® X STRADDLE® 480/95 R 25 tire, average performance by port site. Projected improvement in tire life based on field performance in customer port sites of the MICHELIN® X STRADDLE® 2.450/95 R 25 tire size compared to the MICHELIN® X STRADDLE® 16.00 R 25 tire (the 450/95 R 25 is an equivalent size of the 16.00 R 25), that included individual design improvements incorporated into the MICHELIN® X STRADDLE® 2.480/95 R 25 tire.

<sup>(6)</sup> Measuring rim: 13.00/2.5 and approved rim: 11.25/2.0

# MICHELIN X TERMINAL-T

KEEP YOUR MACHINE ON THE MOVE  
AND KEEP YOUR TIRE BUDGET UNDER  
CONTROL



## Safety and reliability

- High level of transversal and longitudinal grip
- Excellent performance on wet ground
- Tubeless tire
- Anti-static properties



## Versatility

- Same size and same tread for all the axles (front and rear)
- Reduction of stocks

## Productivity

- Low downtime due to high puncture resistance

THE LEADING SOLUTION IN THE MARKET FOR TERMINAL TRACTORS AND TRAILERS, COMBINING  
EXCEPTIONAL PUNCTURE RESISTANCE WITH AN INCREDIBLE LONG LIFE.

## PERFORMANCE INDICATORS

May differ depending on the vehicle your tires are mounted on.

To see the tires' performance ratings, [click here](#).



## AVAILABLE SIZES

280/75 R 22.5 TUBELESS

310/80 R 22.5 TUBELESS

SWITCH FOR A LONGER LIFE IN YOUR  
INTENSIVE APPLICATIONS



## Reinforced crown and sidewalls

- Limits downtime thanks to its high reinforced protection

## Radial technology

The sidewall and tread function separately.

- The crown is stabilized by several plies
- The steel casing has one radial ply



## Long tire life

- Massive tread pattern and two protection bands on sidewalls designed for long tire life and optimized cost per hour
- Increase tire life: From + 50% to + 160% in hours vs. premium competitor

DURABLE AND LONG LASTING TIRE THAT SUPPORTS YOUR OPERATIONS THROUGH LOW DOWNTIME  
AND LOW SERVICE COSTS IN THE MOST DEMANDING APPLICATIONS.

## PERFORMANCE INDICATORS

May differ depending on the vehicle your tires are mounted on.

To see the full size list and performance ratings, [click here](#).



## POPULAR SIZES

315/70 R 15 TUBELESS	11.00 R 20 TUBELESS
355/65 R 15 TUBELESS	12.00 R 20 TUBELESS
9.00 R 20 TUBELESS	14.00 R 24 TUBELESS
10.00 R 20 TUBELESS	16.00 R 25 TUBELESS



## A REAL INNOVATION IN TUBELESS TIRE SYSTEMS



### Exceptional grip

- With multi-block tread pattern
- High void-to-lug ratio

### High speed

- Tread pattern and rubber compounds engineered for cooler running
- Capable of reaching up to 50 km/h (31 mph) under intense usage conditions



### Longevity and robustness

- Rubber compounds and specific tread pattern allow to maximize lifetime and reduce maintenance requirements

### An extremely robust casing

- With steel-belted radial casing instead of usual textile solutions

THE SOLUTION FOR BAGGAGE TRACTORS, URBAN MACHINES AND OTHER SPECIFIC HIGH INTENSITY FORKLIFT USES WITH AN EXCEPTIONAL TOTAL COST OF OWNERSHIP.

### PERFORMANCE INDICATORS

May differ depending on the vehicle your tires are mounted on.

To see the tires' performance ratings, [click here](#).



### AVAILABLE SIZES

6.00 R 9 TUBELESS

6.50 R 10 TUBELESS

7.00 R 12 TUBELESS

## INDUSTRIAL PNEUMATIC ***BIAS TIRES***

The construction of bias tires (also referred to as diagonal ply tires) includes multiple layers of fabric plies, set one on the other, running diagonally from bead to bead. Their benefits include high stability, low acquisition costs and a robust solution for rough industrial usage.



# SOLIDEAL AIR 550

SUPERIOR DURABILITY,  
PERFORMANCE AND COMFORT



## Unique tread design with flat profile

- Increasing stability while reducing vibrations for better comfort



## Deep tread lug with abrasion-resistant rubber compound

- Improves tire life and provides better traction

## Thick sidewall

- Protects against side impacts causing flat tires

## Heavy-duty carcass

- Maximizes tread puncture resistance to prevent flat tires

COMBINING A SMOOTH, COMFORTABLE RIDE WITH GREAT OVERALL TIRE LIFE. THANKS TO ITS UNIQUE TREAD DESIGN, SUPERIOR CARCASS STRENGTH AND SIDEWALL PROTECTION WHICH MAKES IT THE LOWEST OPERATING COST SOLUTION.

## PERFORMANCE INDICATORS

May differ depending on the vehicle your tires are mounted on.

To see the full size list and performance ratings, [click here](#).



## POPULAR SIZES

6.50-10/14PR	28x9-15/14PR
7.00-12/14PR	5.00-8/10PR
6.00-9/10PR	



# SOLIDEAL ED PLUS NM

DURABLE, PERFORMING AND  
COMFORTABLE NON-MARKING TIRE



## Deep tread lug

- Improves tire life and provides better traction

## Unique tread design with flat profile

- Increases stability while reducing vibrations for better comfort



## Thick sidewall

- Protects against side impacts causing flat tires
- Two times more rubber than standard tires

## Heavy-duty carcass

- Maximizes tread puncture resistance to prevent flat tires

## Non-marking natural rubber compound

- Prevents visible marks on the floor, ensuring a clean working environment
- Reduces chunking and cutting

PROVIDES SUPERIOR CARCASS STRENGTH AND SIDEWALL PROTECTION, IT'S ALSO THE IDEAL NON-MARKING SOLUTION FOR INDOOR OPERATIONS AND FOR ELECTRICAL AND RENTAL FLEETS.

## PERFORMANCE INDICATORS

May differ depending on the vehicle your tires are mounted on.

To see the full size list and performance ratings, [click here](#).



## POPULAR SIZES

6.50-10/14PR	28x9-15/14PR
7.00-12/14PR	5.00-8/10PR
6.00-9/10PR	

# SOLIDEAL AIR 570

ENERGY EFFICIENT SOLUTION  
FOR ELECTRIC TRUCKS



## Flat tread profile

- Enhances stability and provides even tire wear

## RIB pattern and low-abrasion compound

- Provides low-rolling resistance for best energy efficiency



## Reinforced carcass and sidewall

- Provides additional puncture resistance to prevent flat tires

## Smooth continuous center lug

- Reduces vibration and provides enhanced steerability

OUR BEST ALL-AROUND PNEUMATIC TIRE FOR ELECTRIC FORKLIFTS. ENGINEERED TO DELIVER LOW ROLLING RESISTANCE AND REDUCED VIBRATIONS FOR OPTIMAL PERFORMANCE.

## PERFORMANCE INDICATORS

May differ depending on the vehicle your tires are mounted on.

To see the full size list and performance ratings, [click here](#).



## POPULAR SIZES

15x4 1/2-8/12PR

23x9-10/16PR

5.00-8/8PR

18x7-8/14PR

# SOLIDEAL HAULER LT

READY FOR YOUR CHALLENGES



## Wide square tread profile

- Provides superior stability

## Massive tread blocks and deep lugs

- Extend service life in severe applications



## Wide sidewall with rim guard

- Provides great side impact resistance
- Three times thicker than our standard tires

## Reinforced undertread

- Increases puncture resistance

WITH A HEAVY-DUTY CARCASS AND HIGH ABRASION-RESISTANT TREAD, IT DELIVERS BOTH INCREDIBLE PUNCTURE RESISTANCE AND LONG LIFE. WITH A REINFORCED SIDEWALL FOR SIDE IMPACT PROTECTION, IT'S UNSTOPPABLE.

## PERFORMANCE INDICATORS

May differ depending on the vehicle your tires are mounted on.

To see the full size list and performance ratings, [click here](#).



## POPULAR SIZES

7.00-12	18x7-8
6.00-9	28x9-15
6.50-10	



# SOLIDEAL HAULER SM

READY FOR YOUR CHALLENGES



## Wide smooth profile

- Provides low vibrations (comfort) and prevents lug tearing on the steer axles on abrasive surfaces



## Wide sidewall with rim guard

- Provides best side impact resistance
- Three times thicker than our standard tires

ITS SMOOTH TREAD PATTERN INCREASES TIRE LIFE PREVENTS LUG TEARING AND INCREASES STEERABILITY.

## PERFORMANCE INDICATORS

May differ depending on the vehicle your tires are mounted on.

To see the tires' performance ratings, [click here](#).



## AVAILABLE SIZES

10.00-20

12.00-20

# SOLIDEAL HAULER HA-TR

READY FOR YOUR CHALLENGES



## Wide smooth profile

- Provides low vibrations (comfort) and prevents lug tearing on the steer axles on abrasive surfaces

## Massive tread blocks and deep lugs

- Extend service life in severe applications



## Wide sidewall with rim guard

- Provides best side impact resistance
- Three times thicker than our standard tires

ITS UNIQUE HALF-LUG, HALF-SMOOTH TREAD PATTERN PROVIDES EXCELLENT DURABILITY FOR ROAD-TO-RAIL APPLICATIONS, AS WELL AS PREVENTING TAPERED WEAR IN DUAL DRIVE SETUPS.

## PERFORMANCE INDICATORS

May differ depending on the vehicle your tires are mounted on.

To see the tires' performance ratings, [click here](#).



## AVAILABLE SIZES

10.00-20

12.00-20

# SOLIDEAL PORTMASTER HD

NO STRONGER BIAS TIRE



## Massively deep tread

- Provides longer service life on any surface

## Strong carcass and sidewall protection

- Prevents carcass damages due to cutting and sidewall impact

OUR STRONGEST AND MOST DURABLE BIAS TIRE. IDEAL ON HARD SURFACES AND IN HIGHLY ABRASIVE ENVIRONMENTS, ITS EXTREMELY DEEP TREAD INCREASES SERVICE LIFE WHILE PROVIDING THE STRONGEST CARCASS AND THE MOST SIDEWALL PROTECTION POSSIBLE.

## PERFORMANCE INDICATORS

May differ depending on the vehicle your tires are mounted on.

To see the tires' performance ratings, [click here](#).



## AVAILABLE SIZES

12.00-20/20PR

12.00-20/28PR



# SOLIDEAL AIR 561

PERFECT SOLUTION FOR GROUND  
SUPPORT EQUIPMENT



## Deep tread lugs with high performance compound

- Increases tire life

## Energy-efficient rubber compound

- Help reduce wear on heated airport apron surfaces

## Distinctive rib pattern design

- Reduces rolling resistance, vibrations and prevents snaking

## Unique lugs with sipes design

- Increases traction on low grip conditions



ESPECIALLY DESIGNED FOR GROUND SUPPORT EQUIPMENT, THIS TIRE DELIVERS GREAT LIFE ON HIGH TEMPERATURE APRON SURFACES WHILE ENSURING LOW ROLLING RESISTANCE AND INCREASED TRACTION.

## PERFORMANCE INDICATORS

May differ depending on the vehicle your tires are mounted on.

To see the tires' performance ratings, [click here](#).



## AVAILABLE SIZES

6.00-9/10PR

7.00-12/14PR

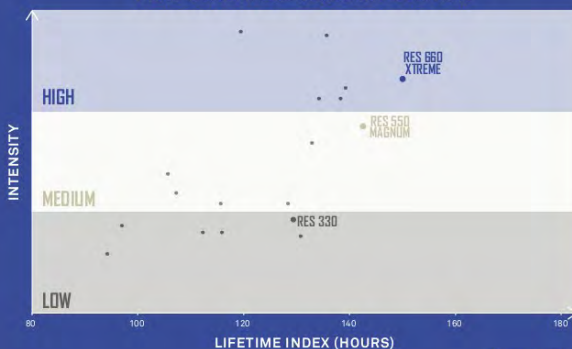
8.00-16.5/10PR

# SOLID **RESILIENT TIRES**

The construction of resilient tires includes several layers of different types of rubbers. Most resilient tires consist of a tread layer, a middle layer and a heel layer with steel bead reinforcements. Their key benefits include puncture and maintenance free operations, high mileage and low cost per hour.



## PERFORMANCE VS COMPETITION



*\*As per our early 2021 tests*

# SOLIDEAL RES 660 XTREME SERIES

OUR LONGEST LASTING TIRE  
FOR HIGH INTENSITY APPLICATIONS



## Continuous center lug

- Reduces vibration which lowers heat build-up and increases life
- Increases operator comfort and slows wear on driveline components

## Exceptional tread rubber compound properties

- Makes this tire our longest lasting tire for high intensity applications



## Wide tread profile

- Increases lateral load stability
- Safer in high-lift and cornering situations

## Wear indicator

- Ensures maximum tire utilization

## Cool running rubber compounds

- Withstand high intensity usage and offer low energy consumption

THE ULTIMATE TIRE FOR HIGH INTENSITY USE. THE SOLIDEAL RES 660 RUNS AT OVERALL LOWER OPERATING TEMPERATURES TO WITHSTAND NON-STOP USAGE AND HIGH LOAD ENVIRONMENTS.

A HIGH PERFORMING ABRASION RESISTANT TREAD RUBBER COMPOUND MAKES THIS TIRE OUR LONGEST LASTING TIRE FOR HIGH INTENSITY APPLICATIONS.

## PERFORMANCE INDICATORS

May differ depending on the vehicle your tires are mounted on.

To see the full size list and performance ratings, [click here](#).



## POPULAR SIZES

18x7-8	7.00-12
6.00-9	28x9-15
6.50-10	



# SOLIDEAL RES XTREME NMAS

ENGINEERED TO PREVENT STATIC  
SHOCKS IN HIGH INTENSITY  
APPLICATIONS



## Wide tread profile

- Increases lateral load stability
- Safer in high-lift and cornering situations

## Continuous center lug

- Reduces vibrations which lowers heat build-up and increases life
- Increases operator comfort and slows wear on driveline components



## Wear indicator

- Ensures maximum utilization

## Patented anti-static technology

- Prevents static electricity build-up to eliminate the risk of safety issues and truck damage

ENGINEERED TO PREVENT STATIC SHOCKS. IT'S DESIGN INCREASES STABILITY, REDUCES VIBRATION AND IMPROVES OPERATOR COMFORT.

## PERFORMANCE INDICATORS

May differ depending on the vehicle your tires are mounted on.

To see the full size list and performance ratings, [click here](#).



## POPULAR SIZES

18x7-8

200/50-10

140/55-9

23x9-10

# SOLIDEAL RES XTREME NM

OPTIMAL NON-MARKING RESILIENT  
SOLUTION FOR HIGH INTENSITY  
APPLICATIONS



## Wide tread profile

- Increases lateral load stability
- Safer in high-lift and cornering situations

## Continuous center lug

- Reduces vibrations which lowers heat build-up and increases life
- Increases operator comfort and slows wear on driveline components



## Wear indicator

- Ensures maximum utilization

## Non-marking natural rubber compound

- Prevents visible marks on the floor, ensuring a clean working environment
- Reduces chunking and cutting

THE PREFERRED SOLUTION FOR HIGH INTENSITY APPLICATIONS REQUIRING  
NON-MARKING RESILIENT TIRES. ITS DESIGN INCREASES STABILITY, REDUCES VIBRATION  
AND IMPROVES OPERATOR COMFORT.

## PERFORMANCE INDICATORS

May differ depending on the vehicle your tires are mounted on.

To see the full size list and performance ratings, [click here](#).



## POPULAR SIZES

18x7-8

200/50-10

140/55-9

23x9-10

# SOLIDEAL RES 550

MAGNUM SERIES

OUR LONGEST LASTING TIRE FOR  
MEDIUM INTENSITY APPLICATIONS



## Wide profile and flat footprint

- Increases stability and grip

## Established tread pattern design

- Proven reliability for  
over 25 years



## Exceptional tread rubber compound properties

- Makes this tire our longest  
lasting tire for medium intensity  
applications

## Large tread blocks and deep lugs

- Maximizes life and traction



THE STANDARD IN RELIABILITY AND OUR LONGEST LASTING TIRE FOR MEDIUM INTENSITY APPLICATIONS.  
ITS WIDE PROFILE AND FLAT FOOTPRINT DESIGNED TO MAXIMIZE LIFE.  
ITS LARGE TREAD BLOCKS AND DEEP LUGS INCREASE TRACTION, WHILE DELIVERING MAXIMUM STABILITY.

## PERFORMANCE INDICATORS

May differ depending on the vehicle your tires  
are mounted on.

To see the full size list  
and performance ratings, [click here](#).



## POPULAR SIZES

18x7-8	7.00-12
6.00-9	28x9-15
6.50-10	

# SOLIDEAL MAGNUM NM

MAGNUM SERIES

OPTIMAL NON-MARKING RESILIENT  
SOLUTION FOR MEDIUM INTENSITY  
APPLICATIONS



## Wide profile and flat footprint

- Increases stability and grip

## Established tread pattern design

- Proven reliability  
for over 25 years

## Non-marking natural rubber compound

- Prevents visible marks on  
the floor, ensuring a clean  
working environment
- Reduces chunking  
and cutting



## Large tread blocks and deep lugs

- Maximizes life and traction

ITS CLEAN RUNNING AND VERSATILITY MAKES THIS TIRE THE IDEAL SOLUTION  
FOR INDOOR OPERATIONS AND FOR ELECTRICAL AND RENTAL FLEETS.

## PERFORMANCE INDICATORS

May differ depending on the vehicle your tires  
are mounted on.

To see the full size list  
and performance ratings, [click here](#).



## POPULAR SIZES

18x7-8	7.00-12
6.00-9	28x9-15
6.50-10	



# SOLIDEAL RES 330

OUR LONGEST LASTING TIRE  
FOR LOW INTENSITY APPLICATIONS



## Well-balanced rubber compound

- Operates in low intensity applications and offers the lowest operating cost

## Aggressive deep tread design

- Provides great traction and stability



## Exceptional tread rubber compound properties

- Makes this tire our longest lasting tire for low intensity applications

## Steel bead reinforced heel

- Prevents rim slip

## Wear indicator

- Ensures maximum tire utilization

BEST-IN-CLASS TIRE FOR LOW-INTENSITY APPLICATIONS. A HIGH PERFORMING TREAD RUBBER COMPOUND MAKES THIS TIRE UNIQUE AND LONG LASTING; A WIDE, AGGRESSIVE TREAD WITH NATURAL RUBBER COMPOUNDS EXTENDS ITS LIFE WHILE RESISTING CUTTING AND CHUNKING.

## PERFORMANCE INDICATORS

May differ depending on the vehicle your tires are mounted on.

To see the full size list and performance ratings, [click here](#).



## POPULAR SIZES

18x7-8

6.00-9

6.50-10

# SOLIDEAL RIB

ULTIMATE SOLID TIRE  
FOR BAGGAGE CARTS AND  
FORKLIFT APPLICATIONS



## Circumferential ribs

- High cornering capability and low vibration
- Prevents snaking and cupping

## Low rolling resistance

- Increases battery life and reduces fuel consumption



## Excellent tread rubber compound

- Enhances tire performance and life

THE SOLIDEAL RIB TACKLES SPECIFIC AIRPORT GROUND SUPPORT EQUIPMENT CHALLENGES LIKE SNAKING AND CUPPING, AND OFFERS LOW VIBRATION AND OPTIMAL STEERING ON FORKLIFT TRUCKS. IT ALSO PROVIDES VERY LOW ROLLING RESISTANCE FOR BEST ENERGY EFFICIENCY AND ENHANCED TIRE LIFE.

## PERFORMANCE INDICATORS

May differ depending on the vehicle your tires are mounted on.

To see the full size list and performance ratings, [click here](#).



## POPULAR SIZES

4.00-8

140/55-9

200/50-10

# SOLIDEAL SOLIDAIR LT

MOST COMFORTABLE  
RESILIENT TIRE



## Continuous center lug

- Reduces vibration which lowers heat build-up and increases life
- Increases operator comfort and slows wear on driveline components



## Unique Solidair aperture design

- Improves ride quality
- Ensures great stability
- Reduces vibrations and prevents shock transfer

A SOLID TIRE WITH A UNIQUE APERTURE DESIGN PREVENTS SHOCK TRANSFER TO FRAGILE OR IMPACT-SENSITIVE LOADS. PROVIDES OPERATORS WITH A MORE COMFORTABLE RIDE ON UNEVEN SURFACES.

## PERFORMANCE INDICATORS

May differ depending on the vehicle your tires are mounted on.

To see the full size list and performance ratings, [click here](#).



## POPULAR SIZES

6.00-9

6.50-10

7.00-12

# SOLIDEAL SOLIDAIR ZZRIB

PUNCTURE-FREE TIRE DESIGNED  
SPECIFICALLY FOR BAGGAGE TRACTORS



## ZZRib pattern for GSE application

- No vibrations
- Great cornering capabilities

## Puncture proof

- No downtime due to tire damage/punctures
- Low maintenance (no pressure control)



## Unique Solidair aperture design

- Improves ride quality
- Ensures great stability
- Reduces vibrations and prevents shock transfer

THE SOLIDAIR ZZRIB IS AN INNOVATIVE SOLID RESILIENT TIRE FOR BAGGAGE TRACTORS IN AIRPORTS. IT'S A COMPLETE PUNCTURE PROOF SOLUTION TO ENSURE NO DOWNTIME AND LOW MAINTENANCE. APERTURE HOLES IN THE TIRE SIDEWALL ARE OFFERING IMPROVED COMFORT AND SHOCK ABSORPTION.

## PERFORMANCE INDICATORS

May differ depending on the vehicle your tires are mounted on.

To see the full size list and performance ratings, [click here](#).



## POPULAR SIZES

6.00-9

6.50-10

7.00-12

7.00-15



# SOLIDEAL HT

SOLIDS ARE A TRUE VALUE  
FOR THE MONEY



## Wide and deep lug pattern

- Ensures good traction and braking performance



## Great rubber compound

- Excellent cushioning for increased driver comfort

VERSATILE SOLID RESILIENT TIRE FOR FORKLIFT APPLICATIONS. THE WIDE AND DEEP LUGS OFFER GREAT TRACTION AND BRAKING PERFORMANCE IN THE HARSHTEST DRIVING ENVIRONMENTS. A SOLID TIRE THAT OFFERS GREAT VALUE FOR MONEY.

## PERFORMANCE INDICATORS

May differ depending on the vehicle your tires are mounted on.

To see the tires' performance ratings, [click here](#).



## AVAILABLE SIZES

7.50-16	12.00-20
8.25-20	12.00-24
9.00-20	14.00-24
10.00-20	

# SOLIDEAL HT BOMBER

SOLIDS ARE A TRUE VALUE  
FOR THE MONEY



## Special rubber compound

- Special rubber compound for low intensity applications



## Quick heel fitment

- Eliminates the need for wheel components and makes it a cost-effective solution

## Wide and deep lug pattern

- Ensures good traction and braking performance

THE HT BOMBER IS A TOUGH SOLID RESILIENT TIRE FOR LOW INTENSITY TRAILER APPLICATIONS.  
IT CAN HANDLE THE HARSHTEST WORK CONDITIONS IN PORT TERMINALS.  
A TIRE THAT OFFERS GREAT VALUE FOR MONEY.

## PERFORMANCE INDICATORS

May differ depending on the vehicle your tires are mounted on.

To see the tires' performance ratings, [click here](#).



## AVAILABLE SIZE

10.00-20/7.50

## PUNCTURE-FREE TIRE DESIGNED SPECIFICALLY FOR TRAILER AND FORKLIFT APPLICATIONS



### Smooth slick tire tread

- Great cornering capabilities
- No vibration for increased driver comfort and low wear on the machine components

### Low rolling resistance

- Increases battery life and reduces fuel consumption



### Excellent tread rubber compound

- Enhances tire performance and life

ALL AROUND SOLID RESILIENT TIRE FOR BOTH TRAILER AND FORKLIFT APPLICATIONS WITH AN OUTSTANDING TIRE LIFETIME. THE SMOOTH TREAD OFFERS GREAT CORNERING CAPABILITIES AND A COMFORTABLE RIDE WITH NO VIBRATIONS. THE LOW ROLLING RESISTANCE REDUCES THE ENERGY USE OF THE MACHINE.

### PERFORMANCE INDICATORS

May differ depending on the vehicle your tires are mounted on.

To see the full size list and performance ratings, [click here](#).



### POPULAR SIZES

10.00-20

7.00-12

6.00-9

# SOLIDEAL SMSL+

PUNCTURE-FREE TIRE DESIGNED  
SPECIFICALLY FOR PORT TRAILERS



## Smooth slick tire tread

- Great cornering capabilities
- Best braking power
- No vibrations



## Low heat build-up rubber compound

- Specifically designed for very high intensive trailer applications
- Protects the tire from overheating
- Low rolling resistance: for less fuel consumption

SOLID RESILIENT TIRE WITH EXCEPTIONAL PERFORMANCE IN TERMS OF RESISTANCE TO HEAT BUILD-UP, WHICH IS KEY IN VERY HIGH INTENSITY TRAILER APPLICATIONS.  
THE SMOOTH TREAD IS PROVEN TO BE THE MOST RELIABLE SOLUTION FOR TRAILERS.

## PERFORMANCE INDICATORS

May differ depending on the vehicle your tires are mounted on.

To see the tires' performance ratings, [click here](#).



## AVAILABLE SIZE

10.00-20/7.5



QUICK HEEL TECHNOLOGY

# A SIMPLER SOLUTION FOR SOLID RESILIENT TIRES

There are **two heel technologies** available for solid resilient tires:

## STANDARD HEEL



The standard heel needs multiple locking components on the rim to keep the tire in place: the advance band, the side ring and the lock ring.

## QUICK HEEL



The quick heel technology is designed to perfectly match the rim contour, ensuring a full contact without the need for additional locking components.

## SIMPLER. SAFER. BETTER.

Installation of multiple components requires additional steps during the tire demounting and mounting process, which means more time out of service for forklifts, in addition to potential safety issues when the locking components are not properly installed or damaged.

Quick heels have been designed to eliminate the need for the additional locking components. They offer a safer and simpler solution to maximize uptime of your fleets and eliminate safety risks.



[Click here to see video](#)

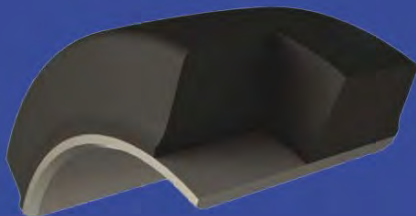
## PROVEN SOLUTION FOR OVER 30 YEARS, APPROVED BY OEMS

Rely on a technology that has been widely used across Europe for over 30 years, has become a worldwide standard and offers a proven solution approved by major OEMs and other industry leaders.

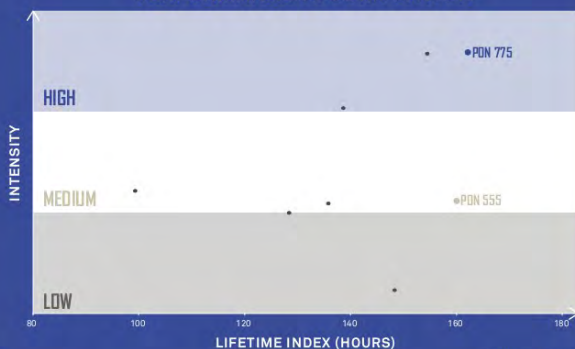
For more information, visit [camso.co](https://www.camso.co)

# SOLID **PRESS-ON TIRES**

Press-on tires, also known as cushion tires, are solid tires made of a rubber tread layer bonded to a cylindrical steel band. They are mounted onto a steel hub using a press. Their key benefits include a high load carrying capacity, great stability as well as puncture and maintenance free operations.



## PERFORMANCE VS COMPETITION



\*As per our early 2021 tests



# SOLIDEAL PON 775

DESIGNED FOR HIGH INTENSITY  
APPLICATIONS



## Widest possible flat footprint

- Reduces ground pressure to minimize heat build-up

## Thermally efficient construction

- Provides a cooler running tire and the best in class energy efficiency

## Abrasion-resistant tread compound

- Increases tire life



## Unique sidewall design

- Reduces heat build-up caused by stresses in the tread shoulders

## Wear indicator and safety line

- Indicates when you should replace your tire

ENGINEERED TO PROVIDE THE BEST PERFORMANCE OF HEAT RESISTANCE, ENERGY EFFICIENCY  
AND LONG LASTING LIFE IN HIGH INTENSITY APPLICATIONS.

## PERFORMANCE INDICATORS

May differ depending on the vehicle your tires are mounted on.

To see the full size list and performance ratings, [click here](#).



## POPULAR SIZES

21x7x15	18x7x12 1/8
21x8x15	22x12x16
16x6x10 1/2	



# SOLIDEAL PON 775 NMAS

ENGINEERED TO PREVENT STATIC SHOCKS  
IN HIGH INTENSITY APPLICATIONS



## Patented anti-static technology

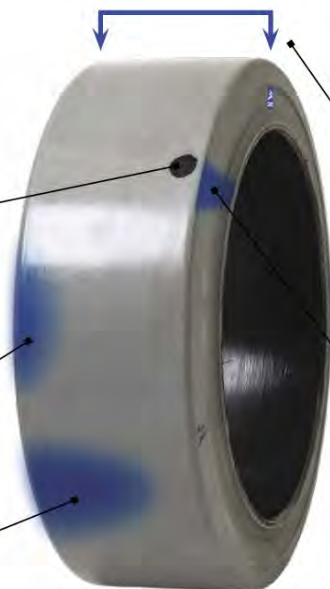
- Prevents static electricity build-up to eliminate the risk of safety issues and truck damage

## Thermally efficient construction

- Provides a cooler running tire and the best in class energy efficiency

## Abrasion-resistant tread compound

- Increases tire life



## Widest possible flat footprint

- Reduces ground pressure to minimize heat built-up

## Uniquely engineered sidewall

- Reduces heat build-up caused by stresses in the tread shoulders

ENGINEERED TO PREVENT STATIC SHOCKS AND PROVIDE THE BEST PERFORMANCE OF HEAT RESISTANCE, ENERGY EFFICIENCY AND LONG-LASTING LIFE IN HIGH INTENSITY APPLICATIONS.

## PERFORMANCE INDICATORS

May differ depending on the vehicle your tires are mounted on.

To see the full size list and performance ratings, [click here](#).



## POPULAR SIZES

21x7x15	18x7x12 1/8
21x8x15	22x12x16
16x6x10 1/2	



# SOLIDEAL PON 555

DURABILITY YOU CAN RELY ON



## Optimal crowned profile

- Excellent cushioning for improved comfort



## High-performance natural rubber compound

- Reduces chunking and cutting
- Suitable for both IC and electric trucks

MADE WITH HIGH-PERFORMANCE, NATURAL RUBBER COMPOUNDS.  
RESISTS CHUNKING AND CUTTING IN THE MOST DEMANDING APPLICATIONS, WHILE DELIVERING  
MAXIMUM LIFE AND STABILITY FOR MEDIUM INTENSITY APPLICATIONS.

## PERFORMANCE INDICATORS

May differ depending on the vehicle your tires are mounted on.

To see the full size list and performance ratings, [click here](#).



## POPULAR SIZES

21x7x15

16x6x10 1/2

16x5x10 1/2

# SOLIDEAL PON 555 NM

NON-MARKING WITH MAXIMUM LIFE  
FOR MEDIUM INTENSITY APPLICATIONS

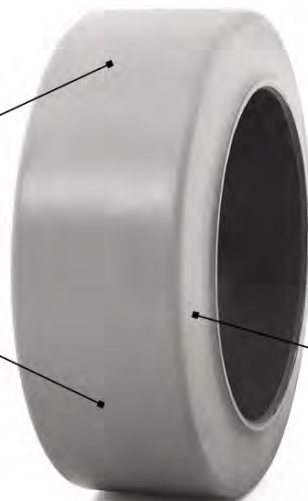


## Low rolling resistance compound

- Increases energy efficiency and thermal performance

## Non-marking natural rubber compound

- Prevents visible marks on the floor, ensuring a clean working environment
- Reduces chunking and cutting



## Unique two-stage construction

- Inner thermal-layer reduces heat build-up for enhanced tire life

ENHANCED NON-MARKING NATURAL RUBBER COMPOUND ENSURES CLEAN WORKING ENVIRONMENT, LOW ROLLING RESISTANCE AND IMPROVED THERMAL PERFORMANCE.

## PERFORMANCE INDICATORS

May differ depending on the vehicle your tires are mounted on.

To see the full size list and performance ratings, [click here](#).



## POPULAR SIZES

21x7x15

16x6x10 1/2

16x5x10 1/2

# SOLIDEAL PON 550

DURABILITY YOU CAN RELY ON



## Wide profile and flat footprint

- Increases stability and grip

## High-performance natural rubber compound

- Reduces chunking and cutting
- Suitable for both IC and electric trucks



## Huge lug depth

- Increases life and traction

RESISTS CHUNKING AND CUTTING IN THE MOST DEMANDING APPLICATIONS,  
WHILE DELIVERING MAXIMUM LIFE AND STABILITY FOR MEDIUM INTENSITY APPLICATIONS.

## PERFORMANCE INDICATORS

May differ depending on the vehicle your tires are mounted on.

To see the full size list and performance ratings, [click here](#).



## POPULAR SIZES

21x7x15

16x6x10 1/2

16x5x10 1/2

# SOLIDEAL PON 550 NM

NON-MARKING WITH MAXIMUM  
LIFE FOR MEDIUM INTENSITY  
APPLICATIONS



## Wide profile and flat footprint

- Increases stability and grip

## Low rolling resistance compound

- Increases energy efficiency  
and thermal performance



## Non-marking natural rubber compound

- Prevents visible marks on  
the floor, ensuring a clean  
working environment
- Reduces chunking  
and cutting

## Unique two-stage construction

- Inner thermal-layer reduces  
heat build-up for enhanced  
tire life

ITS WIDE PROFILE, FLAT FOOTPRINT AND PROVEN TREAD PATTERN DESIGN PROVIDE MAXIMUM STABILITY AND TRACTION. ESPECIALLY DESIGNED TO PROVIDE MAXIMUM LIFESPAN FOR MEDIUM INTENSITY APPLICATIONS REQUIRING NON-MARKING PRESS-ON TIRES.

## PERFORMANCE INDICATORS

May differ depending on the vehicle your tires are mounted on.

To see the full size list  
and performance ratings, [click here](#).



## POPULAR SIZES

21x7x15

16x6x10 1/2

16x5x10 1/2



# SOLIDEAL SM HL

DURABILITY YOU CAN RELY ON



## Optimal crowned profile

- Excellent cushioning for improved steering



## High-performance natural rubber compound

- Reduces chunking and cutting
- Designed to handle very high loads

MADE WITH HIGH-PERFORMANCE NATURAL RUBBER COMPOUNDS.  
RESISTS CHUNKING AND CUTTING IN THE MOST DEMANDING APPLICATIONS,  
WHILE DELIVERING MAXIMUM LIFE, SATBILITY AND HIGH LOAD CAPACITY.

## PERFORMANCE INDICATORS

May differ depending on the vehicle your tires are mounted on.

To see the full size list and performance ratings, [click here](#).



## POPULAR SIZES

40x16x30

28x12x22

28x14x22

# SOLIDEAL SM SRP/SRP+

PERFORMANCE WHEN YOU NEED IT



## Natural rubber compound

- Provides good overall wear and performance



## Low rolling resistance solution

- For high intensity trailer applications

PRESS-ON TIRE DESIGNED TO DELIVER MAXIMUM LIFE AND VERY HIGH LOAD CARRYING CAPACITY. WITH ITS NATURAL RUBBER COMPOUNDS IT DELIVERS MAXIMUM LIFE WHERE PREMIUM TECHNOLOGY IS NOT REQUIRED.

## PERFORMANCE INDICATORS

May differ depending on the vehicle your tires are mounted on.

To see the full size list and performance ratings, [click here](#).



## POPULAR SIZES

22x16x16

425/150-305

405/130-305

645/250-410

## INDUSTRIAL **WHEELS**

Our industrial wheels and wheel assemblies have been engineered for the world's leading OEMs, while working closely with major industry leaders to ensure that their design and manufacture meet all applicable standards. A combination of high-volume production plants with local specialized production facilities throughout the world allow us to provide high quality wheels and wheel assemblies in any volume.



# INDUSTRIAL WHEELS

INDUSTRIAL WHEELS FOR YOUR  
MATERIAL HANDLING APPLICATIONS



MULTI-PIECE WHEELS



SPLIT WHEELS



PRESS-ON WHEELS

GLOBALY ESTABLISHED NETWORK OF ENGINEERING AND PRODUCTION FACILITIES  
WHICH PROVIDE ALSO SHORT-TERM DELIVERIES, FOCUSED ON YOUR SPECIAL DEMANDS,  
DUE TO WHEEL OPERATIONS IN USA, GERMANY, BELGIUM, AUSTRALIA AND SRI LANKA.

KNOXVILLE

DUISBURG

HERENTHOUT

EKALA

GIRRAWEEEN

For more information, please visit our [Industrial wheels section on camso.co](https://www.camso.com/industrial-wheels)



# ACCESSORIES

## FOR RADIAL TIRES

### TUBELESS BEAD SEAL

#### SIZE MARKINGS

**Example of marking: 110 TL 8 (for 4.33R - 8 rim)**

110: indicates the width of the TBS in mm

TL for a tubeless tire

8 indicates the rim diameter in inches

The choice of TBS depends on the width of the rim on which the tire is to be fitted.

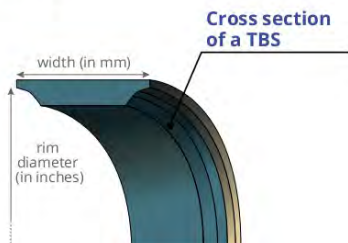
The allowed rim width(s) are indicated on each tubeless bead seal.



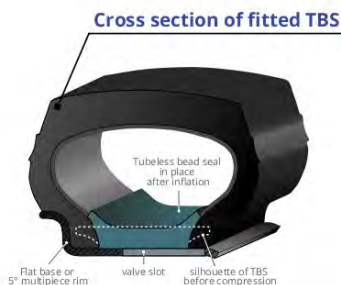
TBS FITTED ON WHEELS WITH WIDTH LESS THAN 6 INCHES HAVE A CHIMNEY WHERE THE VALVE WILL BE POSITIONED.

TBS FOR WHEELS WITH WIDTH GREATER THAN OR EQUAL TO 6 INCHES HAVE TWO CHIMNEYS; ONE CENTRAL AND THE OTHER OFFSET TO ALLOW CORRECT POSITIONING RELATIVE TO THE VALVE SLEEVE. THE CHIMNEY WHICH IS NOT USED BY THE VALVE IS SEALED WITH A PLASTIC PLUG (SUPPLIED WITH THE TBS).

#### PRINCIPLE

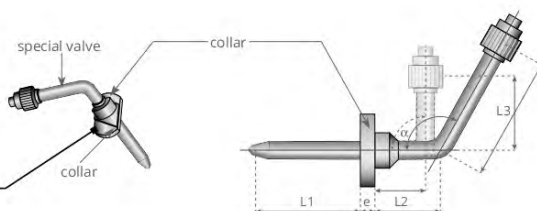


**Cross section of a TBS**



**Cross section of fitted TBS**

**Special collared valve**



# Ready to get you rolling

Our Solideal on-site services managed by an extensive network of dedicated Beyond Road technicians using specialized equipment will keep your operations rolling no matter what type of forklift tires you may need:



**ON-SITE  
MOBILE UNIT**

## Supply & Fit Full Forklift Tire Service

Forklift tire mobile fitting, our core service, with best-in-class performance tires specifically selected to fit your customized fleet at the guaranteed lowest operating cost.

Service level is personalized according to your fleet analysis and business needs.

## Professional Fleet Analysis Maintenance Cycle Optimization

Superior fleet solution for maximum uptime. In-depth fleet analyses that take into account your individual operating conditions.

## Pneumatic tires Flat proofing program

Specialized solution for harsh applications. Professional polyurethane tire-filling with advanced filling technology "pure plus recycling" to ensure maximum tire lifetime in a sustainable way. Precise pressure calculation based on individual requirement.

## Fit or Press Only Specific Forklift Tire Service

If you would like to order your tires yourself and prefer to have someone else look after the installation our order-based professional on-site service is designed to maximize your company's uptime.

Beside fit or press services we may include a fleet analysis and tire recommendation to identify the lowest operating cost solution.

## Tire Regrooving Life Extension Service

Maximize the life of your tire with constant tire performance by regrooved tread patterns & puncture repairs

## Delivery Assembly mounting

Widest range of full assemblies (tire + wheel) available, ready to be delivered for your personal fleet needs.

## Contactless service

One less thing to worry about with our contactless service: simply make your order via email or phone call.

Just tell us when you would like our mobile service to come to you, ensure that you have your forklift ready at the agreed time, and we'll take care of the complete tire service including real time communication.

No further on-site support is required. The digital order processing rounds off our contactless and efficient process.



**Specialized  
technicians with  
in-depth knowledge  
of the most efficient  
replacement methods**

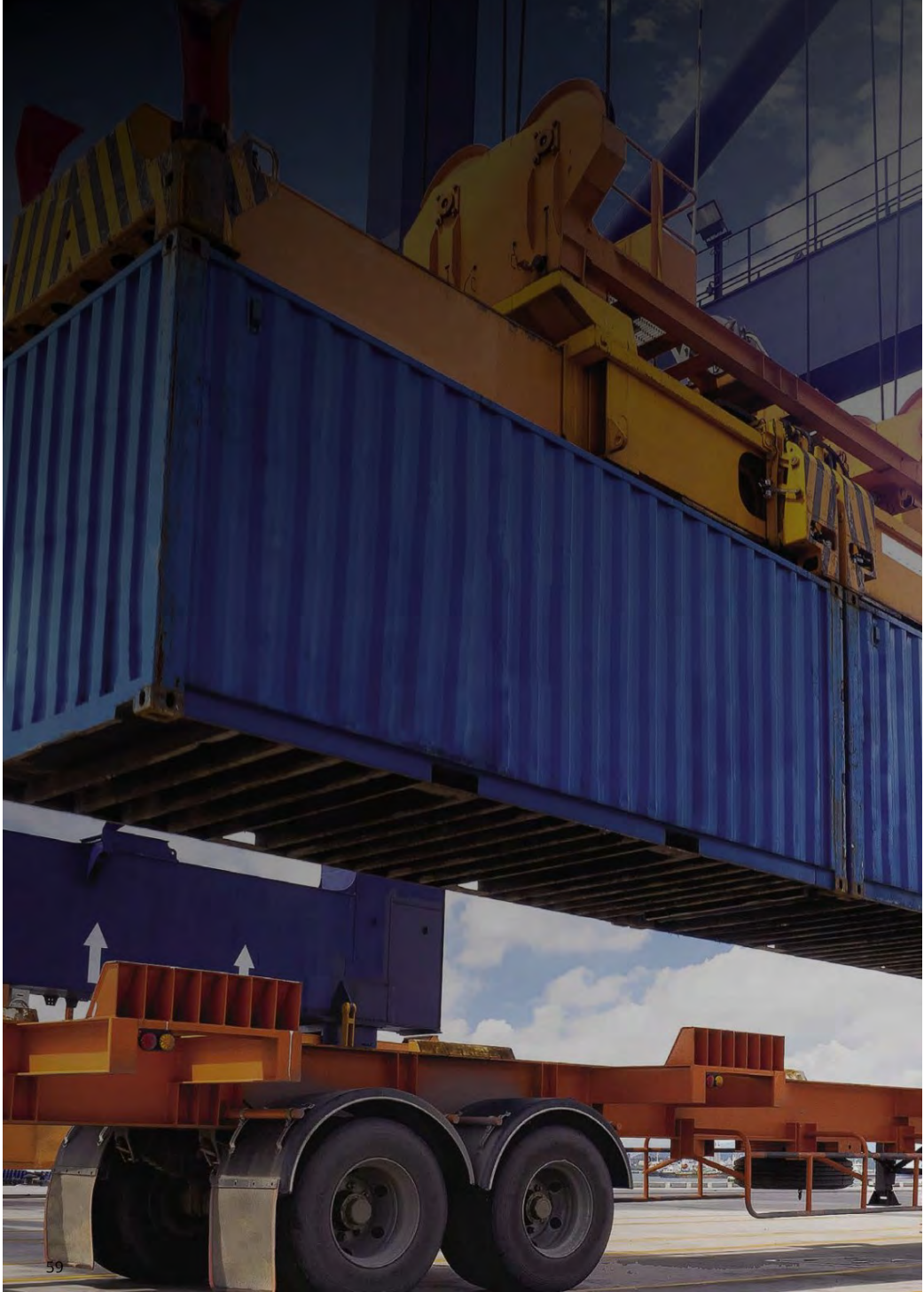
## Global partners network

Wherever you may be, you can also rely on our proven network of partners to assist you with your tire maintenance requirements.

**solideal**  
on-site service



[solideal.com](https://solideal.com)





## MAINTENANCE TIPS

# FROM OUR EXPERTS

Our experts love to share tips to help our clients carry out safe and efficient operations, with maximized uptime. Here's a glimpse of some of our most relevant contents, which are available online.

## WHEN TO REPLACE YOUR TIRES

### RESILIENT TIRES

Should not be used beyond the 60J line (or safety line), as indicated on the sidewall.



### PRESS-ON TIRES

Should be replaced when the overall rubber height reaches 2/3 of the original rubber height. Newer press-on tires have a safety line.



### RADIAL & BIAS INDUSTRIAL PNEUMATIC TIRES

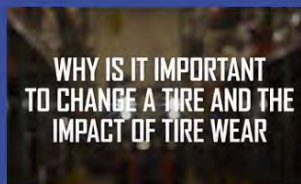
Should be measured using a tread depth gauge in the middle of the tread to measure tread depth. Replace tires when the depth gets close to 0 millimeters.



## THE IMPACT OF TIRE WEAR

The top 7 issues linked to tires are:

- Fatigue and job stress on the operator
- Sudden pressure loss
- Stability issues with loads
- Damage to the facility
- Leaking of engine and transmission due to loosened hardware
- Acceleration of fork heel wear
- Compromised loads



[Training Video Series](#)



## MAINTENANCE TIPS

Here are our maintenance tips before getting back to work:

### Check brakes

### Inspect your tires

Look for damage and wear

### Leakage

Check lines and hoses for leaks

### Torquing

Ensure wheels are torqued correctly

### Controls function

Make sure all forklift controls are functioning properly

### Wear

Inspect fork for damage and heel wear

### Inflation pressure

Check inflation pressure for pneumatics



## HOW TO READ TIRE SIZE

### RESILIENT AND INDUSTRIAL PNEUMATIC TIRES

Today, we find three different types of size markings for pneumatics and resilient tires. This is due to the evolution of the nomenclature over time. Radial tires include a **R** in their tire size.

### PRESS-ON TIRES

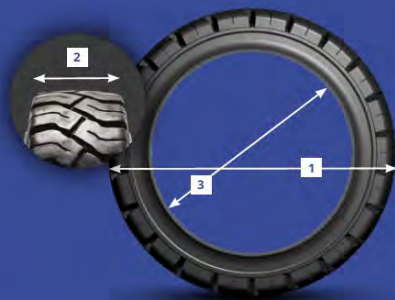
Did you notice there were two different ways of displaying size marking on tires: imperial (inches) and metric (mm)? The size of a press-on tire is indicated in 3 numbers:

- 1 Overall diameter
- 2 Section width
- 3 Internal diameter

[How to read tire size: PON](#)

### PNEUMATIC SHAPED TIRE SIZES

[How to read tire size: IND & RES](#)



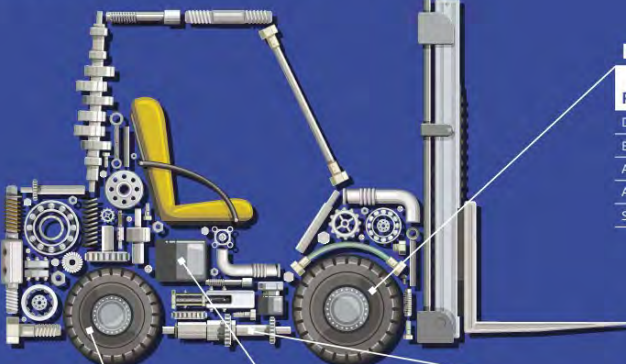
## TOTAL COST OF OWNERSHIP OF YOUR TIRES

When it comes to tire costs, it's important to take more than the upfront cost of purchasing units; remember to take into consideration operational cost, tire performance and the requirements of the application.

Tires with lowest acquisition costs could end up costing more in the end, especially if they are not right for the application and take a toll on your machines. Our brand offering meets the specific requirements of any application, with a portfolio that offers both low acquisition and low operation cost solutions.

For additional support, our teams of dedicated specialists will be able to help you make the calculations.

### POTENTIAL REPLACEMENT COSTS



#### STEER AXLE

PART	COST	LABOR HOURS
Steer Axle	\$1,185	6 (IS)
King Pins	\$1,175	2-3 each
Bushings	\$1,160	2 (IS)
Bushings	\$1,210 (set)	4 (IS)
Wheel Bearings	\$1,160	8
Tie Rod Ends	\$1,115 (ea.)	2
Steer Cylinder	\$1,710	4
Steer Knuckle	\$1,340 (ea.)	2-3 each

#### BATTERY

PART	COST	LABOR HOURS
36 Volt - 18 Cell	\$3,000	
48 Volt - 24 Cell	\$3,500	
1 Cell	\$3,200	2
1 Tray	\$3,350	15

#### DRIVE AXLE

PART	COST	LABOR HOURS
Drive Axle Shaft	\$246	1
Bearings	\$550 (set)	2
Axle Housing Mount	\$600 (ea.)	4
Axle Hub	\$610 (ea.)	3
SCR Components	\$500	4

#### DRIVE MOTOR

PART	COST	LABOR HOURS
Drive Motor	\$3,450	8 (IS)
Armature	\$1,775	8 (IS)
Brushes	\$1,752 (set)	2
Holders	\$1,385 (set)	4
Fields	1,800 (set)	8 (IS)
Contractor Tips	\$1,105	.3
Pump Motor	\$1,800	2

\*Prices are in USD.

## STORAGE TIPS

### INDOOR VS. OUTDOOR HAVE DIFFERENT RULES

While indoor storage is preferable, tires can also be stored outside if they respect certain conditions. Moisture, high or variations in temperature and light all contribute to a faster aging of rubber. For tires stored outside, we recommend a maximum storage period of 4 months on a clean and well-drained surface.



Maintenance and Use Guide

# **WARRANTY**

## **5 YEAR TIRE WARRANTY<sup>†</sup>**

All products are guaranteed to be free from defects due to materials and workmanship.

If a product is deemed defective upon our examination and analysis inside a period of five (5) years from the day of manufacture of the product, we will provide an allowance against the current purchase price. The allowance will be determined, to be applied towards the purchase of a new product, based on the remaining unused portion of the tread or warrantable lifetime on the defective product.

For radial tires, five (5) years from the day of purchase will be taken into consideration by presenting the necessary requirements to prove the date of purchase. If no proof is submitted, we will take into account the five (5) years from the day of manufacture.

The cost of transportation, service, and sales tax already paid will be borne by the owner of the product making the claim. Warranty will not apply if the product has been installed incorrectly, altered, repaired or misused in any matter whatsoever, which, in our opinion, has affected the performance of the tire.

We can not be held responsible for damages or claims caused by the tire whether such damages are direct or indirect, special, consequential or otherwise. Any liability is strictly limited to repair or reduction of an applicable purchase, according to the mentioned provision in our General Claim Policy and Adjustments.

**This warranty is for the exclusive benefit of the owner and is transferable to a subsequent owner but is not otherwise assignable**

<sup>†</sup> This text is an extract of our General Claim Policy and Adjustments, which is the only valid and applicable Policy.

For the complete warranty details please visit [connectbeyondroad.michelingroup.com](https://connectbeyondroad.michelingroup.com) or [camso.co](https://camso.co)

# ***WE HANDLE IT***

LOCAL CONTACT INFORMATION



[business.michelin.co.uk/construction-industry](https://business.michelin.co.uk/construction-industry)



[camso.co](https://camso.co)