



## URBAN TRANSPORT

**RECAMIC**

Michelin Retread Technologies



Multi positions

# XZU3 M+S



## BETTER MILEAGE PERFORMANCE

Up to 15% more mileage thanks to:

- The specific compound that resists wear under engine and brake torques;
- Sipes rigid enough to increase mileage performance;
- The volume of rubber, 14% more than on the XZU.

XZU

100



XZU3

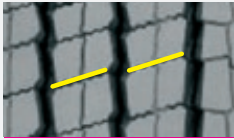
115



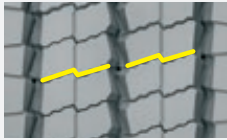
## QUIETER

The "bayonet" siping technique reduces noise.

Straight sipes

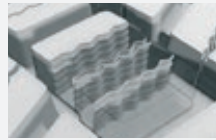


XZU3 sipes



## GREATER SAFETY

The full-depth "double-wave" sipes provide the flexibility the tread blocks need to ensure lasting grip throughout the tyre's life.



275/70R22.5  
295/80R22.5  
305/70R22.5

## ADVICE FOR RECAMIC RETREADED TYRES

- Fit Recamic retreaded tyres on the rear axles of motor vehicles.
- Recamic tyres can be fitted in all axle positions for trailers and semi-trailers.

## THE RECAMIC RANGE



### LONG DISTANCE TRANSPORT

- Motorways and major trunk roads
- Minimal braking and accelerating



### REGIONAL TRANSPORT

- Long distances on trunk and regional roads with frequent braking and accelerating
- Shorter distances on regional journeys with frequent stops
- Access to loading and unloading points on slightly aggressive ground
- Difficult weather conditions (rain, snow, ice)



### COACH-INTERCITY TRANSPORT

- Long distances on trunk and regional roads with frequent braking and accelerating
- Shorter distances on regional journeys with frequent stops



### URBAN TRANSPORT

- Driving in urban areas with very frequent stops (Buses, waste trucks, roadwork vehicles, etc)



### WORKSITE TRANSPORT

- Driving generally over short distances and on all types of road
- Access to difficult loading or unloading points
- Requires off-road traction



### RECAMIC - MFPM

23, Place des Carmes  
63040 Clermont-Ferrand - France  
www.recamic.com