

**BECAUSE ONE SIZE  
DOESN'T FIT ALL!**

**MICHELIN®**  
**ENERGY GUARD LITE**



- MAXIMIZE LOAD CAPACITY WITH AN EXTRA LIGHTWEIGHT SKIRT (40 LBS.)
- SIMPLIFY MAINTENANCE & STOCK MANAGEMENT: MODULAR SOLUTION FITS BOTH 28' PUP TRAILERS & 53' LONG BOX TRAILERS
- AN ADDITIONAL 6 INCHES OF GROUND CLEARANCE VS THE ENERGY GUARD FULL LENGTH SKIRT VIRTUALLY ELIMINATING DOCKING ISSUES.
- IMPROVED ACCESS TO SPARE TIRE, BRAKE RESERVOIR AND SNOW CHAINS THANKS TO ITS STREAMLINED DESIGN (SIZE: 10'8"X27")



**Today's  
Trucking**



**SEE REVERSE**  
**FOR ADDITIONAL PRODUCT DETAILS**

Michelin North America Inc., One Parkway South, Greenville, SC 29615, 1-888-622-2306  
Copyright © 2023 Michelin North America, Inc. The Michelin Man is a registered trademark owned by Michelin North America, Inc. All rights reserved. (01/23)

# VISIT OUR WEBSITE TO LEARN MORE

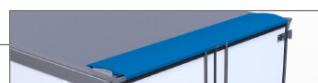
## BUSINESS.MICHELINMAN.COM/ENERGY-GUARD

### MICHELIN ENERGY GUARD LITE 53FT LONG BOX SOLUTION

#### Fuel Savings

Up To 7.27 gallons per 1,000 miles<sup>3</sup>

Up To \$2,778 per year<sup>1,3</sup>



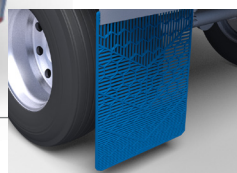
#### TRAILER TOP FAIRING

Fairing edges attach flush to the trailer, maintaining an aerodynamic profile and preventing deformation & loose seal at docking.



#### OPTI-SIZED TRAILER SKIRT

Lightweight trailer skirt with an optimized size, designed to provide maximum fuel efficiency to weight.



#### ENERGY FLAPS

Patented individual louvers helps to increase safety by dispersing spray downward, away from vehicles and out of the drivers side-view, while greatly reducing vehicle drag.

### MICHELIN ENERGY GUARD LITE 28FT PUP SOLUTION

#### Fuel Savings

11.68 gallons per 1,000 miles<sup>4</sup>

\$4,799 per year<sup>2,4</sup>



#### ENERGY FLAPS

#### OPTI-SIZED TRAILER SKIRT

#### ENERGY FLAPS

#### OPTI-SIZED TRAILER SKIRT

#### ENERGY FLAPS

SCAN TO  
LEARN MORE



<sup>1</sup> 53' Estimated fuel cost savings are calculation based on if vehicle travels 125,000 miles per year with 2019 diesel fuel average price of \$3.056/gal.(www.eia.gov). Actual on-road results may vary.

<sup>2</sup> 28' Estimated fuel cost savings are calculation based on if vehicle travels 125,000 miles per year with 2021 diesel fuel average price of \$3.287/gal.(www.eia.gov). Actual on-road results may vary.

<sup>3</sup> Estimated fuel savings based on commissioned third-party Mesilla Valley Transportation Solutions (MVTs) Certified<sup>TM</sup> fuel economy testing procedure in Sept 2020 on a modern class-8 truck with a 53' dry van trailer at 65 mph compared to a truck and trailers with no aerodynamic devices. Michelin<sup>®</sup> Energy Guard Lite Solution includes side skirts, top fairing, and mud flaps. Actual on-road results may vary.

<sup>4</sup> Estimated fuel savings based on commissioned third-party Mesilla Valley Transportation Solutions (MVTs) Certified<sup>TM</sup> fuel economy testing procedure in June 2022 on a modern class-8 truck with two 28' dry van trailers at 65 mph compared to a truck and trailers with no aerodynamic devices. MICHELIN<sup>®</sup> Energy Guard Lite Pup Solution includes side skirts and mud flaps. Actual on-road results may vary.