



**INDIA'S MOST  
FUEL EFFICIENT TYRE\***



**INTRODUCING  
MICHELIN 295/80R22.5  
X MULTI ENERGY™ Z**

**FUEL SAVING ALL – POSITION TYRE  
MEANT FOR NEW AXLE LOAD  
FOR TRUCK AND BUS**





# MICHELIN 295/80 R22.5 X MULTI ENERGY™ Z



## UPTO 6%\*\* GUARANTEED FUEL SAVINGS

- Thanks to **Infinicoil Technology** with enhanced endurance that gives you more mileage and fuel savings
- Thanks to **Regenion Technology** with rigid and compact tread pattern helps lower fuel consumption



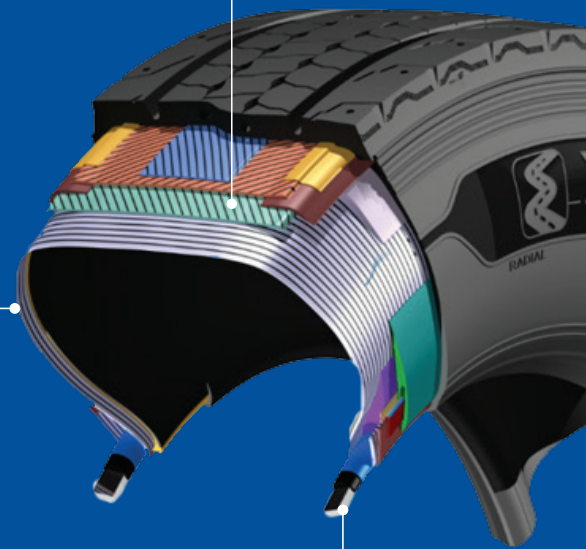
## BETTER TYRE MILEAGE

- Thanks to **Regenion Technology** with new grooves that emerge over the tyre's life for better mileage and wear profile
- Compact sculpture with higher rubber volume for better rolling resistance and mileage



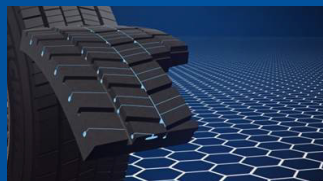
## HIGHER LOAD INDEX

- Thanks to **Powercoil Technology** for new generation of robust steel casing cables for better endurance
- Thanks to **Duracoil Technology** that is a unique reinforced zone between the tyre and the wheel for better robustness



### INFINICOIL TECHNOLOGY MICHELIN ENDURANCE OVER THE TYRE'S LIFETIME

- A continuous steel wire (approx 400 metres) wrapped around the tire to provides greater stability for lifetime
- Enhanced endurance with higher load index or harder usage conditions for your confident ride
- With benchmark endurance, Infinicoil Technology gives you more mileage and fuel savings



### REGENION TECHNOLOGY MICHELIN GRIP MILE AFTER MILE

- Self-regenerating tread blocks, supported by MICHELIN mold 3D metalprinting technologies, providing solid grip throughout your tyre's lifetime
- New grooves emerge over the tyre's life for enhanced mobility.
- Our rigid and compact tread pattern helps lower fuel consumption and tread aggression



### POWERCOIL TECHNOLOGY MICHELIN ENDURANCE WITH IMPROVED ROLLING RESISTANCE

- A new generation of more robust steel casing cables make them lighter leading to better endurance and better rolling resistance



### DURACOIL TECHNOLOGY A REINFORCED BEAD FOR BETTER ROBUSTNESS

- Duracoil brings an unique reinforced zone between the tyre and the wheel for better robustness and longer life
- Our high-end nylon protects the bead bundle for a better stability while rolling

## TECHNICAL SPECIFICATIONS

Size	Load/Speed Index	PR	Load/Tyre in Kg (S/D)	Max. Speed (km/hr)	Max Inflation Pressure (PSI)		Overall Diameter (mm/in)	Section Width (mm/in)	Recommended Rim Width (in)	Tread Depth (mm/in)
295/80 R 22.5 XMEZ	154/150L	18	3750/3350	120	Bar	PSI	1041/40.98	286/11.25	8.25X22.5	14/0.55
					9.00/8.50	130				

\*In comparison to all competitor tyres of same size and based on internal rolling resistance data of MICHELIN and competitor tyres.

\*\*In comparison to leading competitor's tyre of same size and based on internal rolling resistance data of MICHELIN and competitor tyres.

Subject to Michelin Terms & Conditions. For complete terms and conditions, please visit [www.michelintransport.in](http://www.michelintransport.in)

⚠ All Michelin tyres are subject to Michelin standard warranty.

Warning: Serious or fatal injury may result from tyre failure due to incorrect selection, fitting, usage or maintenance of tyres. To ensure correct selection, fitment, usage and maintenance, refer to the Michelin Truck and Bus Tyre Service Manual (Asia-Pacific edition) - available at a Michelin Tyre dealer.



# MICHELIN