

MICHELIN ROAD 6

MICHELIN ROAD 6 GT

New



THE NEW MUST-HAVE MICHELIN ROAD TIRE

MICHELIN ROAD 6



The new version of the acclaimed MICHELIN Road tire*

The MICHELIN Road 6 benefits from 2 decades of constant innovation and the highest levels of expertise.



More wet grip!

+15% more grip than MICHELIN Road 5** in wet conditions thanks to 100% Silica Technology and a brand new tread pattern.



Ride for longer!

The new high tech compound increases the longevity of the tire by 10% ***



MICHELIN Road 6 also exists in a GT Sport Touring version

MICHELIN ROAD 6 GT

THE NEW TIRE FOR NEW ADVENTURES



BETTER TRANSVERSAL GRIP AND LONG LASTING PERFORMANCE.

MICHELIN SILICA TECHNOLOGY

MICHELIN Silica Technology improves grip in cooler temperatures and on wet roads, without compromising tread life. Off-road it ensures the durability of tread blocks.



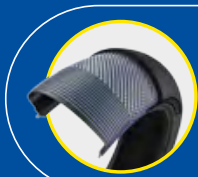
MICHELIN 2CT+ TECHNOLOGY

Harder rubber underneath the softer rubber on the shoulders gives better rigidity at lean, for more stability when cornering, especially under strong acceleration or heavy braking.



MICHELIN WATER EVERGRIP TECHNOLOGY

MICHELIN Water Sipe Technology and MICHELIN Water Brake Technology allow better water evacuation for added safety on wet roads, but water storage capacity naturally decreases as the tire wears down. The MICHELIN Water Evergrip technology is even more efficient, the sipes evolve over time and miles to give ever wider grooves, increasing the groove ratio to preserve the capacity of the tire to store and evacuate water.



The tire MICHELIN Road 6 GT is equipped with the technology

MICHELIN REINFORCED RADIAL-X EVO TECHNOLOGY

The new generation of X-radial carcass combined with a reinforcement ply provides the optimal solution for heavy motorcycles.



Front

MICHELIN ROAD 6

Size	TL / TT	CAI
110/70 ZR 17 M/C 54W	TL	618469
120/60 ZR 17 M/C (55W)	TL	009349
120/70 ZR 17 M/C (58W)	TL	830256
120/70 ZR 18 M/C (59W)	TL	411606
120/70 ZR 19 M/C (60W)	TL	749529
110/80 ZR 19 M/C (59W)	TL	055466

Rear

Size	TL / TT	CAI
140/70 ZR 17 M/C 66W	TL	782021
150/60 ZR 17 M/C 66W	TL	818332
150/70 ZR 17 M/C (69W)	TL	313146
160/60 ZR 17 M/C (69W)	TL	834270
170/60 ZR 17 M/C (72W)	TL	774473
180/55 ZR 17 M/C (73W)	TL	159304
190/50 ZR 17 M/C (73W)	TL	599184
190/55 ZR 17 M/C (75W)	TL	579939



Front

MICHELIN ROAD 6 GT

Size	TL / TT	CAI
120/70 ZR 17 M/C (58W)	TL	695754

Rear

Size	TL / TT	CAI
180/55 ZR 17 M/C (73W)	TL	582220
190/50 ZR 17 M/C (73W)	TL	184761
190/55 ZR 17 M/C (75W)	TL	509890

MICHELIN Road 6 GT - * Recommended by 91% of MICHELIN Road 5 users. Verified Reviews, December 2020 - June 2021 - **In-house comparisons of the MICHELIN Road 6 tires and MICHELIN Road 5 tires ranges conducted at Fontange track: the 07-08/07/2020, dimensions of the tires: 120/70 ZR 17 and 180/55 ZR 17, on a Suzuki 1250S Bandit and a Triumph Street Triple S 765; the 15/03/2021 and 21/05/2021, dimensions of the tires: 120/70 ZR 17 and 180/55 ZR 17, on a Suzuki 1250S Bandit. In-house comparisons of the MICHELIN Road 6 GT tires and MICHELIN Road 5 GT tires ranges conducted at Fontange track: the 17/10/2020, dimensions of the tires: 120/70 ZR 17 and 180/55 ZR 17, on a BMW R1200RT;

the 17/09/2020, dimensions of the tires: 120/70 ZR 17 and 160/60 ZR 17, on a Kawasaki ER6n; the 17/01/2020, dimensions of the tires: 110/80 ZR 19 and 150/70 ZR 17, on a BMW R1200 GS. ***According to an independent test on open-road made by DEKRA Narbonne: 20/07/2020 to 07/08/2020, dimensions of the tires: 120/70 ZR 17 et 180/55 ZR 17 MICHELIN ROAD 6 tires, on a BMW K1300R. 17/08/2020 to 14/10/2020, dimensions of the tires: 120/70 ZR 17 et 180/55 ZR 17 MICHELIN ROAD 6 GT tires, on a BMW R1250 RT loaded except top case. 28/09/2020 to 12/11/2020, dimensions of the tires: 120/70 ZR 17 et 160/60 ZR 17 MICHELIN ROAD 6 tires, Moto: Suzuki Gladuis 650.